





Fulford Chase  
Fulford, York  
YO10 4QP

£340,000



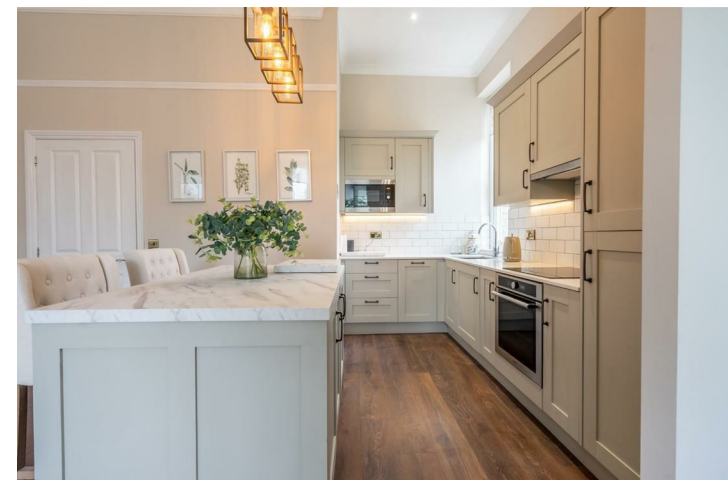
A completely modernised, two bedroom, ground floor apartment in the centre of a sought after gated development.

Located in the gated residence of Fulford Chase, is this luxury two double bedroom apartment, situated in the most sought after area two miles south from the city centre, and the various amenities Fulford has to offer. This leafy and popular residential suburb boasts excellent school catchments and is close to York University.

Positioned on the ground floor of this former grand period property, the internal accommodation comprises an entrance hall leading to the open plan kitchen / dining / living area. The brand new fitted kitchen in its chic soft colour pallet will likely appeal to a range of purchasers, with a central island and integrated appliances. The main bedroom includes bespoke fitted shutters and a brand new en suite bathroom and bespoke fitted wardrobes. The second double bedroom benefits from a large window and bespoke fitted shutters. The family shower room with its modern black Critall effect shower will like impress even the most discerning purchaser.

Externally, the property is set within beautifully landscaped, communal gardens and has allocated parking. Offered with no onward chain, viewing is highly recommended to appreciate the quality on offer.

Leasehold  
Lease Length 999 from 2006  
Service Charge £2400 p.a.  
Ground Rent £150 p.a.  
Council Tax Band D





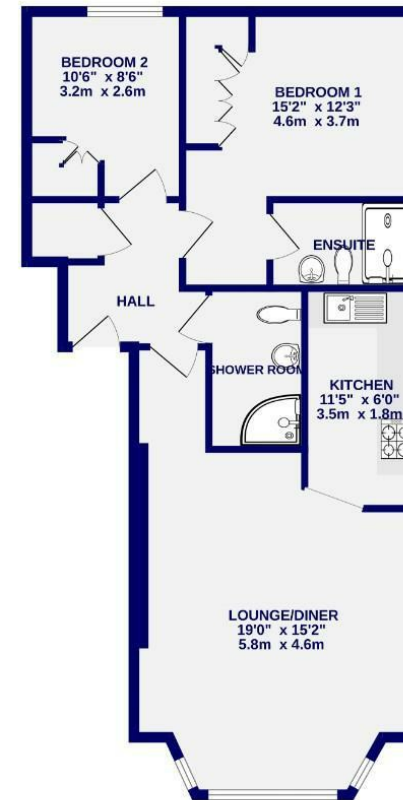


# Fulford Chase Fulford, York YO10 4QP

Leasehold  
Council Tax Band - D

- Ground Floor Apartment
- Sought After Gated Development
- Off Street Parking
- Two Bedrooms and Two Bathrooms
- Located in Fulford
- Completely Renovated Throughout
- EPC D

GROUND FLOOR  
745 sq.ft. (69.2 sq.m.) approx.



5 FULFORD CHASE, YORK

TOTAL FLOOR AREA: 745 sq.ft. (69.2 sq.m.) approx.

Whilst every attempt has been made to ensure the accuracy of the floorplan, measurements of rooms and any other items are approximate. It is included in the plan for guidance only and does not form part of the overall floor area and no responsibility is taken for any error, omission or mis-statement. This plan is for illustrative purposes only and should be used as such by any prospective purchaser. The services, systems and appliances shown have not been tested and no guarantee as to their operability.  
Made with Metropix ©2024

These particulars have been prepared as accurately and as reliably as possible, but should not be relied upon as 'statement of fact'. If there is any point which is of particular importance to you, please contact the office and we would be pleased to check the information. We have not tested any services, appliances, equipment or facilities and nothing in these particulars should be deemed to be a statement that they are in good working order, or that the property is in good structural condition or otherwise. Any areas, measurements, floor plans or distances referred to are given as a guide only and are not precise. Purchasers must satisfy themselves by inspection or by otherwise regarding the items mentioned above and as to the correctness of each of the statements contained in these particulars. No person in the employment of Ashtons has any authority to make or give any representation or warranty whatsoever in relation to this property or these particulars nor enter into any contract relating to the property on behalf of the vendor.