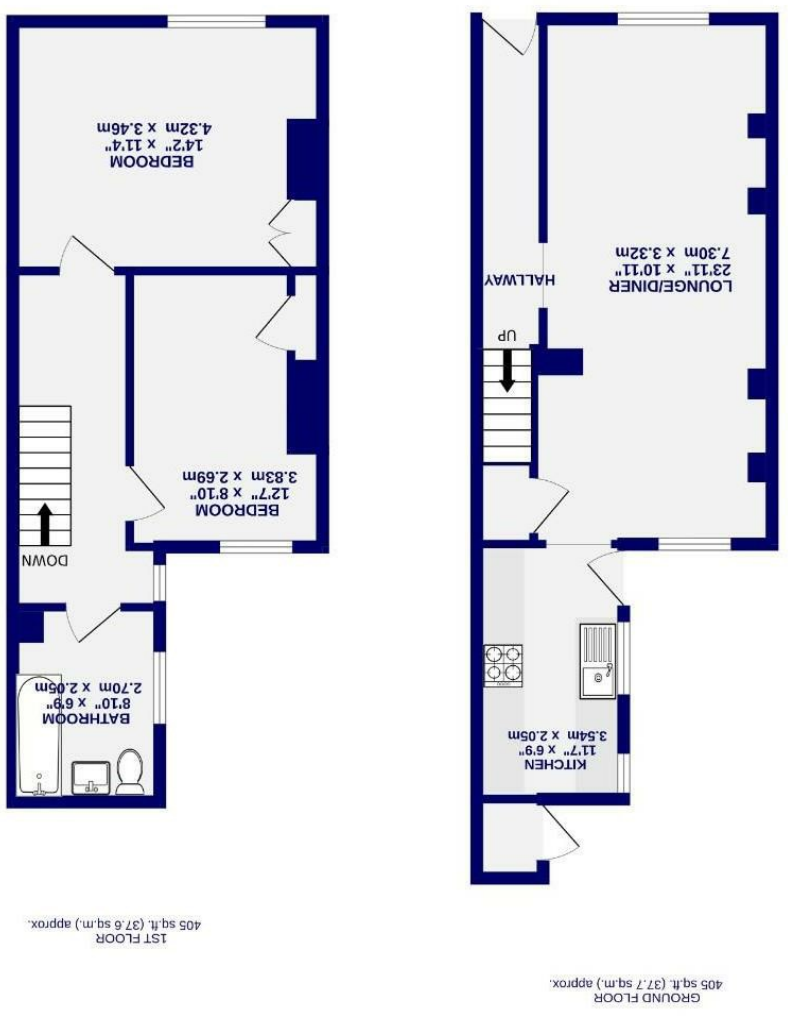


These particulars have been prepared as accurately and as reliably as possible, but should not be relied upon as 'statement of fact'. If there is any point which is of particular importance to you, please contact the office and we would be pleased to check the information. We have not tested any services, appliances, equipment or facilities and nothing in these particulars should be deemed to be a statement that they are in good working order, or that the property is in good structural condition or otherwise. Any areas, measurements, floor plans or distances referred to are given as a guide only and are not precise. Purchasers must satisfy themselves by inspection or by otherwise regarding the items mentioned above and as to the correctness of each of the statements contained in these particulars. No person in the employment of Ashtons has any authority to make or give any representation or warranty whatsoever in relation to this property or these particulars nor enter into any contract relating to the property on behalf of the vendor.

- EPC C
- In move in condition
- A Short Walk to Bishopthorpe Road
- On Street Parking
- With Seating Storage and Astroturf
- South Facing Rear Courtyard Garden
- Current Owner
- Renovated and Modernised By the
- Period Terrace House

Freehold  
Council Tax Band - B

# Lower Ebor Street , York YO23 1AY



Lower Ebor Street  
, York  
YO23 1AY

£325,000



A recently renovated and extended period terrace house in a very sought after location with rear garden and period features.

This charming period home is set to the south of York in a most sought after location; just a short walk from Bishopthorpe Road and the many much acclaimed local amenities it boasts as well as being well placed for access to the city centre and railway station.

Beautifully presented throughout and offering spacious accommodation which is light, bright and stylish, sure to appeal to a range of potential buyers. A tiled entrance hall leads to a wonderful open plan reception space with ample room for seating and dining area. The modern kitchen is fitted with a range of units and appliances including a fitted washing machine and dishwasher. Both bedrooms to the first floor are large enough for double beds and they are complimented by a modern bathroom with a retro style.

Externally, there is an enclosed courtyard style garden and on street resident's permit parking is available.

Council Tax Band B

