





TOWN PROPERTY

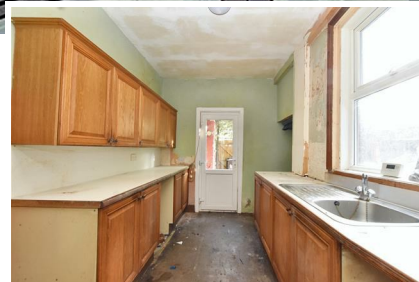


01323 412200

Freehold

Offers In Excess Of
£200,000

 2 Bedroom  2 Reception  1 Bathroom



12 Sheen Road, Eastbourne, BN22 8DR

Located in the heart of Seaside, just yards from nearby shops and the picturesque seafront, this Period terraced house is being sold CHAIN FREE and is in need of extensive refurbishment and modernisation. Having two double bedrooms and two receptions, there is a kitchen, bathroom and separate wc and a patio garden to the rear. There is a fairly modern boiler and some repointing to the front elevation and roof works have also been undertaken. Eastbourne town centre is approximately a quarter of a mile distant.

OPEN HOUSE: FRIDAY 8TH NOVEMBER 10AM - 11AM & SATURDAY 9TH NOVEMBER 2PM - 3PM.
STRICTLY BY APPOINTMENT ONLY.

12 Sheen Road,
Eastbourne, BN22 8DR

Offers In Excess Of
£200,000

Main Features

- Period Terraced House
- Two Double Bedrooms
- Sitting Room
- Dining Room
- Kitchen
- Bathroom
- Separate WC
- Walled Patio Garden
- Refurbishment Required
- CHAIN FREE

Entrance

Door to-

Hallway

Radiator. Door to-

Sitting Room

Radiator. Window to front aspect.

Dining Room

Radiator. Double glazed window to rear aspect. Door to-

Kitchen

A sink unit with an adjacent base. Wall mounted units. Space and plumbing for a number of appliances. Double glazed window to side aspect and door to rear.

Stairs from Ground to First Floor Landing

Access to loft (not inspected).

Bedroom 1

Radiator. Double glazed window to front aspect.

Bedroom 2

Radiator. Double glazed window to rear aspect.

Bathroom

Panelled bath with wall mounted shower. Pedestal wash hand basin. Radiator. Frosted double glazed window.

Separate WC

Low level WC. Window.

Outside

There is walled patio garden to the rear of the house with gated access.

COUNCIL TAX BAND = B