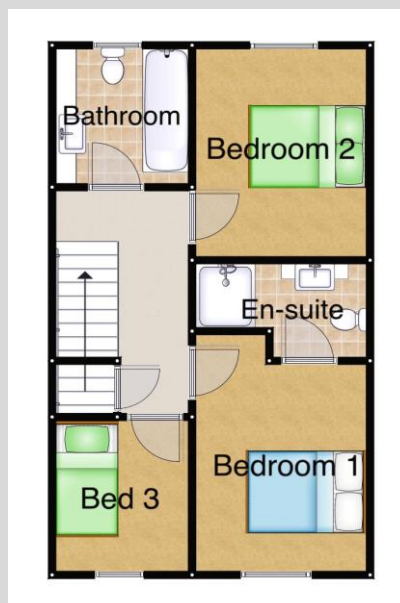


**10 Nottingham Road, Spondon
Derby, DE21 7NH**

A deceptively spacious three bedroom property with an en-suite bathroom to the master bedroom, a ground floor WC, kitchen diner with patio doors to a good size rear garden and a brick built garage with parking to the rear. The property is well presented throughout, has a gas combination boiler fueling the central heating and hot water and UPVC double glazing throughout. This really is a very spacious property indeed and includes a large sitting room with a window to the front and an open staircase to the first floor.



£180,000

Details;

Entrance Hallway

Cloakroom/WC

Sitting Room 5.36m x 4.42m

Kitchen/Diner 4.42m x 2.74m

First Floor Landing

Bedroom 1 3.43m x 2.57m

En-Suite Shower Room 1.42m x 1.35m + Shower

Bedroom 2 3.2m x 2.72m

Bedroom 3 2.64m x 1.73m

Bathroom 1.85m x 1.65m

Garage to the Rear

Parking for one vehicle



Disclaimer

This brochure has been created to represent the Everington and Ruddle's perception of this property. The vendor has verified the content as being fair and accurate. You are advised to check the content prior to entering into any contract to purchase the property, in short, use your common sense.

Viewing; **Please call us on; 01332-297711 or 01332-669600 to make an appointment to view.**

