

Buy. Sell. Rent. Let.



Buller Street, Grimsby



3



1



2

When it comes to
property it must be


lovelle



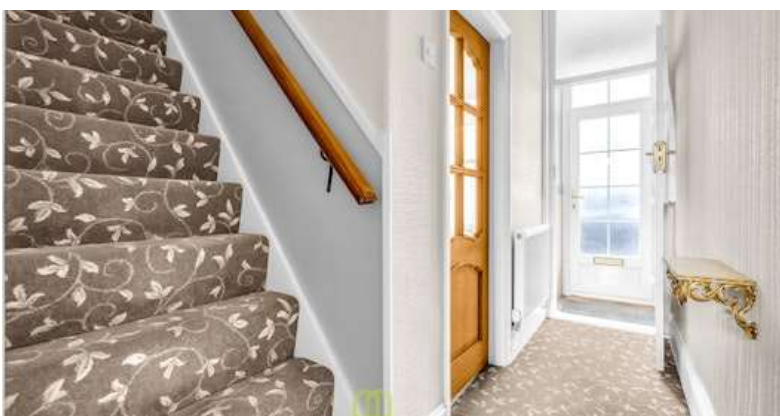
£75,000



A well presented three bedroom mid-terraced house located in central Grimsby.

Key Features

- Terraced House
- Three Bedrooms
- Two Reception Rooms
- uPVC DG & GCH
- Bathroom & Kitchen
- No Chain
- EPC rating TBC
- Tenure: Freehold





Lovelle offer to market with NO ONWARD CHAIN this well presented three bedroom mid-terraced house located in central Grimsby. The property is positioned well for ease of access to local amenities and the immediate town centre.

This delightful terraced house offers spacious accommodation that briefly comprises of; entrance hall, two reception rooms, kitchen and bathroom, three bedrooms and also benefitting from uPVC double glazing and gas central heating. Externally there are gardens to the front and rear.

Suitable for First Time Buyers, Family's or Investors, contact us today to arrange your viewing and realise all the property has to offer.

Disclaimer

We endeavour to make our sales particulars accurate and reliable, however, they do not constitute or form part of an offer or any contract and none is to be relied upon as statements of representation or fact. Any services, systems and appliances listed in this specification have not been tested by us and no guarantee as to their operating ability or efficiency is given. All measurements have been taken as a guide to prospective buyers only, and are not precise. If you require clarification or further information on any points, please contact us, especially if you are travelling some distance to view.

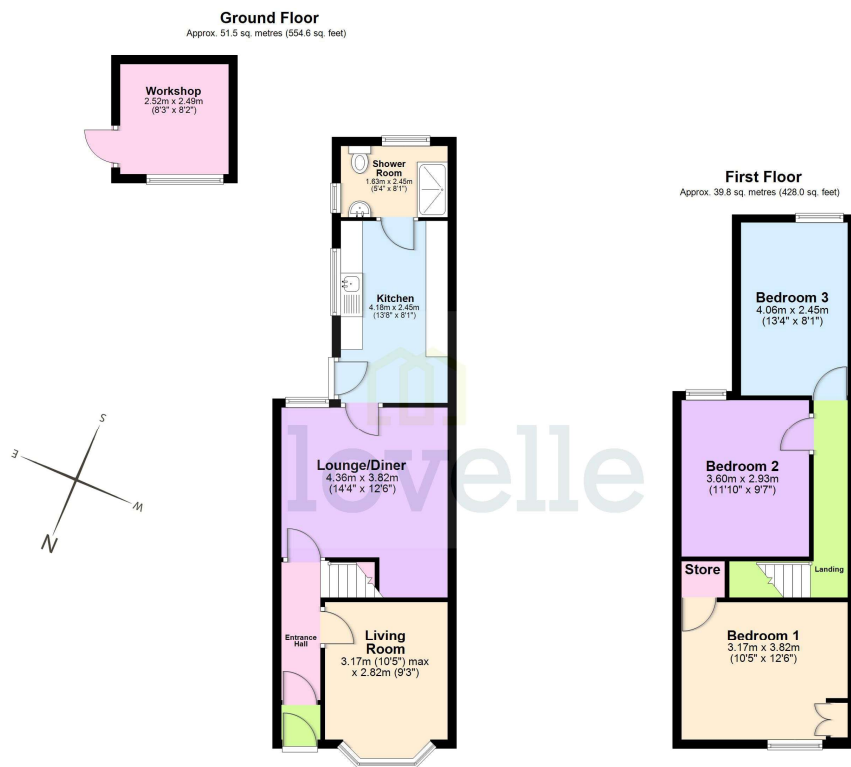
Mobile and broadband

It is advised that prospective purchasers visit [checker . ofcom . org . uk](http://checker.ofcom.org.uk) in order to review available wifi speeds and mobile connectivity at the property.

Sold as seen

Due to limited information held by the sellers, we must advise any prospective purchaser that the property is being 'Sold As Seen'.





Total area: approx. 91.3 sq. metres (982.6 sq. feet)

The provided floor plan is intended for general informational purposes only and may not accurately represent the exact dimensions, layout, or features of the property. The floor plan should not be relied upon for making decisions about purchasing, renting, or modifying the property. Actual measurements and features may vary. It is recommended that interested parties conduct a physical inspection of the property to verify the accuracy of the floor plan and obtain specific information about the property's condition, amenities, and any other relevant details.
Plan produced using PlanUp.

When it comes to **property**
it must be


lovelle

01472 251918

grimsby@lovelle.co.uk