

Buy. Sell. Rent. Let.

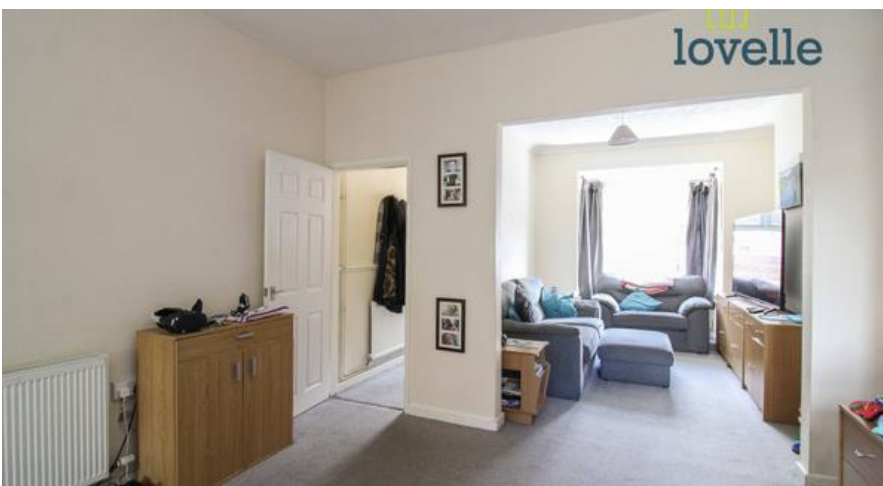


Torrington Street , Grimsby



When it comes to
property it must be


lovelle



£89,950



A spacious mid-terrace house located within a popular residential area of Grimsby Town Centre.

Key Features

- Mid-Terrace House
- Spacious Accommodation
- Two Reception Rooms
- Three Bedrooms
- Kitchen & Bathroom
- Popular Town Centre Location
- EPC rating D
- Tenure: Freehold



Being sold with NO ONWARD CHAIN is this spacious and well presented three bedroom mid-terrace house that benefits from uPVC double glazing and gas central heating throughout. To the ground floor there is a spacious lounge/diner and well fitted kitchen. To the first floor are three bedrooms and family bathroom. Externally there are gardens to both the front and rear.

Located within a popular residential area of Grimsby Town Centre and positioned well for ease of access to the vast range of amenities on offer. Viewings are highly recommended.

Room Measurements

0.00m x 0.00m (0'0" x 0'0")

Entrance hall 0.92m X 3.38m

Dining Room 3.45m X 4.02m

Lounge 2.84m X 4.21m

Kitchen 4.98m X 2.57m

Bedroom 1 3.40m X 3.32m

Bedroom 2 3.46m X 2.97m

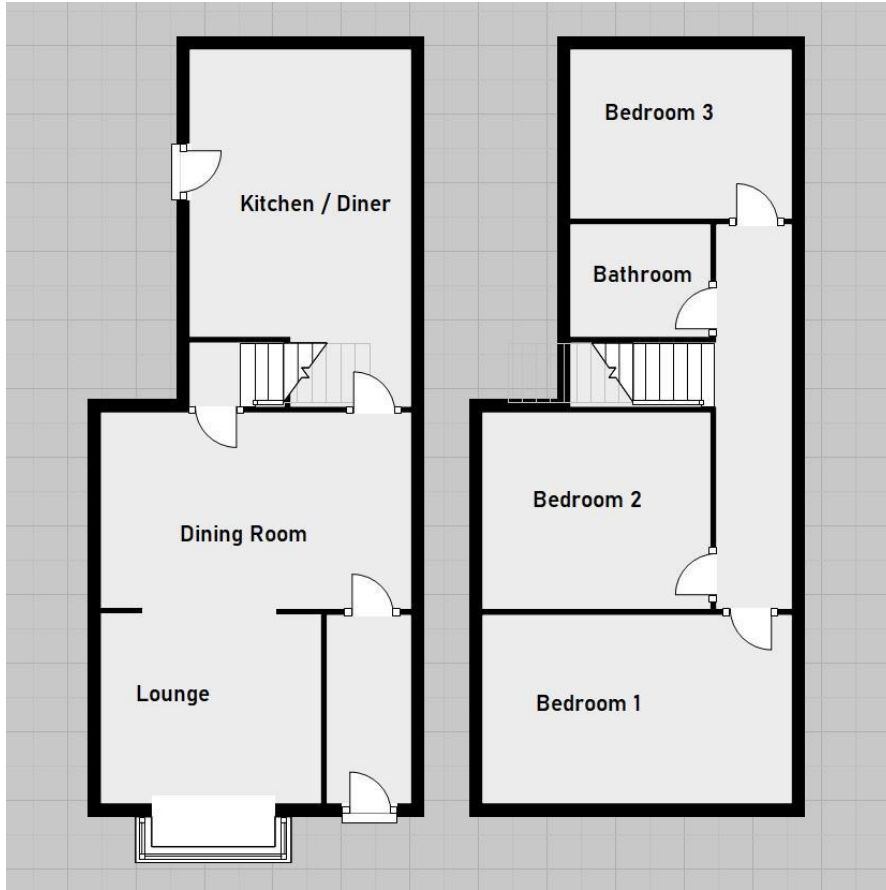
Bathroom 1.75m X 1.58m

Bedroom 3 3.02m X 2.61m

Disclaimer

0.00m x 0.00m (0'0" x 0'0")

We endeavour to make our sales particulars accurate and reliable, however, they do not constitute or form part of an offer or any contract and none is to be relied upon as statements of representation or fact. Any services, systems and appliances listed in this specification have not been tested by us and no guarantee as to their operating ability or efficiency is given. All measurements have been taken as a guide to prospective buyers only, and are not precise. If you require clarification or further information on any points, please contact us, especially if you are travelling some distance to view.



When it comes to **property**
it must be


lovelle

01472 251918
grimsby@lovelle.co.uk

