

Buy. Sell. Rent. Let.



Harrow Lane, Scartho Top, Grimsby



3



1



1

When it comes to  
property it must be

  
lovelle





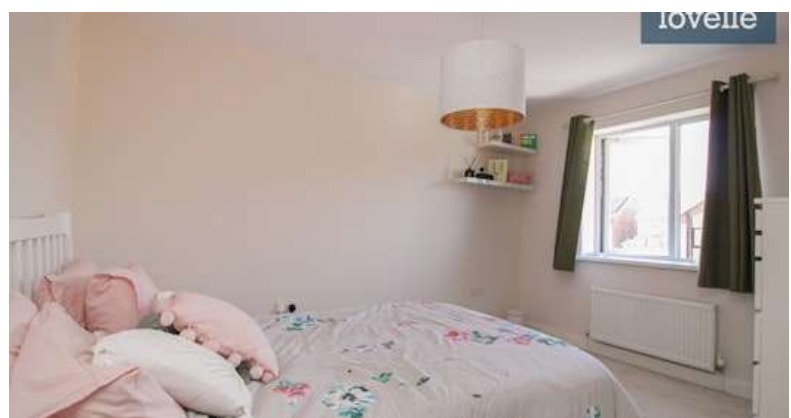
£179,950



This immaculate terraced house in the desirable Scartho Top area features a spacious open-plan layout with three bedrooms, a fully equipped kitchen, and enclosed rear parking, making it an ideal move-in ready home for first-time buyers or families, with no onward chain.

### Key Features

- Mid-Terraced House
- Three Bedrooms
- Spacious Lounge
- Kitchen/Diner
- Bathroom & GF WC
- Off-Street Parking
- EPC rating C
- Tenure: Freehold







Presenting a sublime example of an immaculate terraced house located in the coveted region of Scartho top, close to the hospital and surrounded by local amenities and public transport links. This property is a prime offering in a sought-after location.

The house offers a brilliant open plan layout that includes a single spacious reception room. The lounge is expansive, providing the perfect backdrop for relaxing family evenings or hosting guests. The kitchen, complete with wood effect units, is fully equipped with an oven and gas hob. It also has plumbing in place for a washer. The dining space within the kitchen, coupled with doors leading to the garden, makes it a perfect spot for family meals or entertaining guests.

The residence boasts three bedrooms, two of which are double bedrooms. The third, a spacious single, could also serve as a home office or children's room. A well-appointed bathroom with a shower over bath, WC, and sink completes the living accommodation.

Further enhancing this property are unique features such as uPVC double glazing, gas central heating, and the benefit of off street rear parking.

This property is presented for sale with no onward chain, making it an ideal choice for first-time buyers or families seeking a move-in ready home in a popular location. With every detail carefully considered, this house offers a wonderful combination of comfort, convenience, and class.

## Measurements

Hall 5.51m X 1.89m

Cloakroom 1.60m X 0.82m

Lounge 4.99m X 3.32m

Kitchen/Diner 3.05m X 5.35m

Bedroom 1 4.42m X 3.15m

Bedroom 2 3.70m X 3.22m

Bedroom 3 2.55m X 2.58m

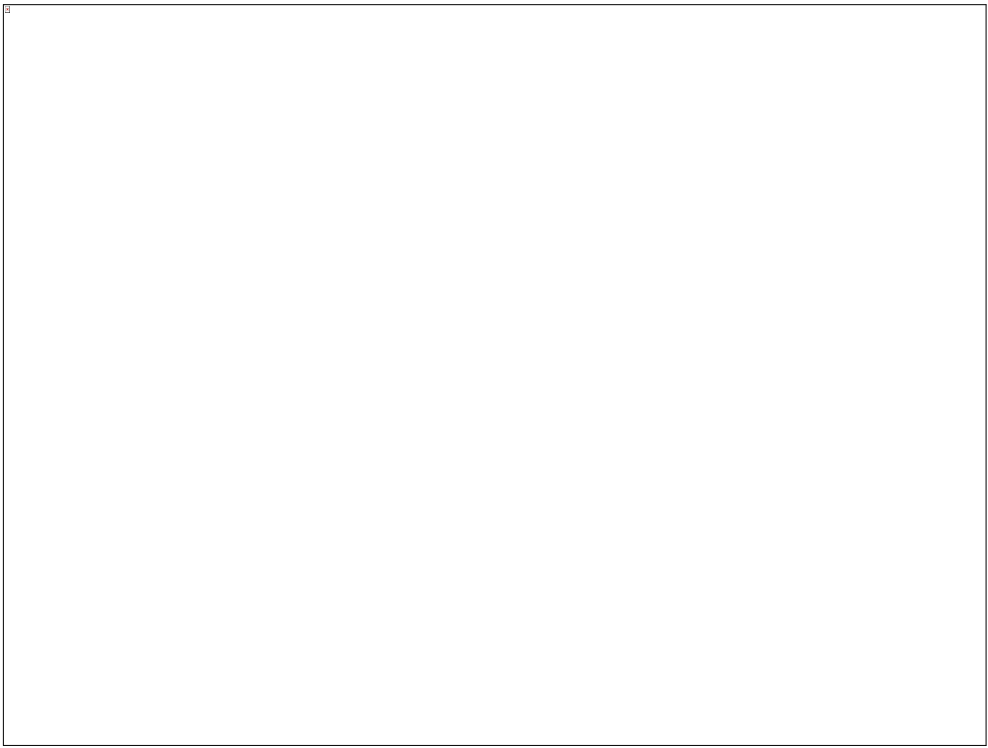
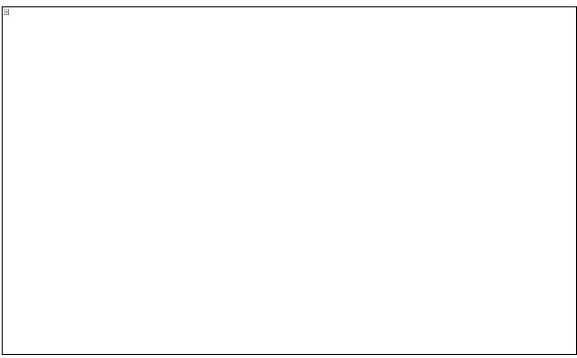
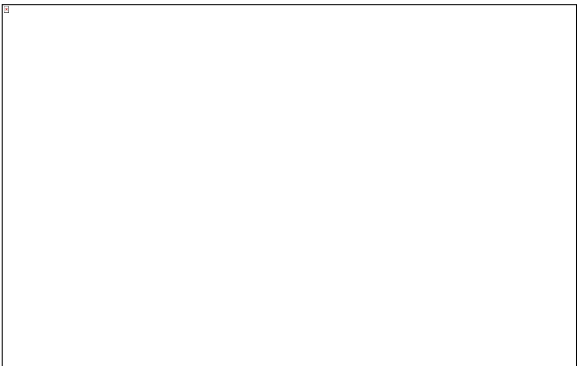
Bathroom 2.07m X 1.83m

## Disclaimer

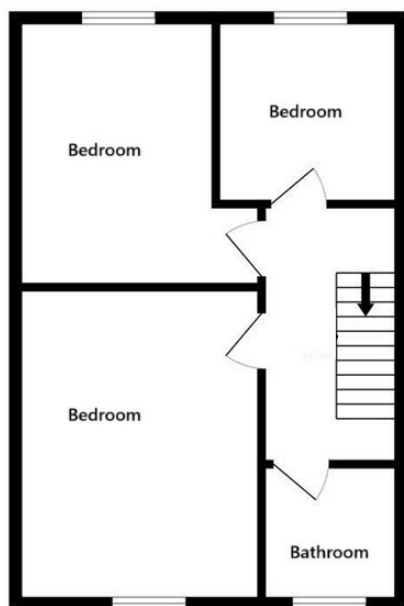
We endeavour to make our sales particulars accurate and reliable, however, they do not constitute or form part of an offer or any contract and none is to be relied upon as statements of representation or fact. Any services, systems and appliances listed in this specification have not been tested by us and no guarantee as to their operating ability or efficiency is given. All measurements have been taken as a guide to prospective buyers only, and are not precise. If you require clarification or further information on any points, please contact us, especially if you are travelling some distance to view.

## Mobile and broadband

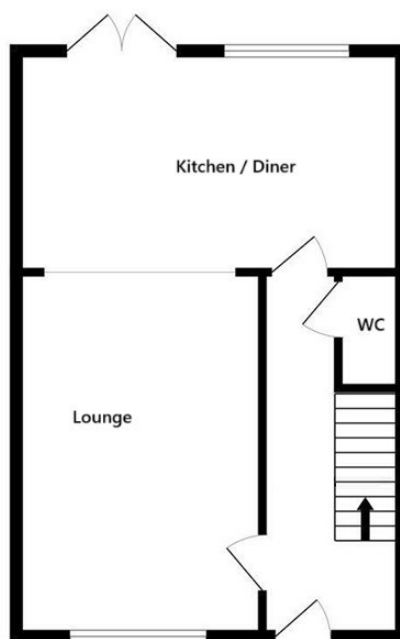
It is advised that prospective purchasers visit [checker . ofcom . org . uk](http://checker.ofcom.org.uk) in order to review available wifi speeds and mobile connectivity at the property.



1ST FLOOR



GROUND FLOOR



When it comes to **property**  
it must be

  
**lovelle**

01472 251918

[grimsby@lovelle.co.uk](mailto:grimsby@lovelle.co.uk)