

Buy. Sell. Rent. Let.



Oakham Walk, Immingham



3



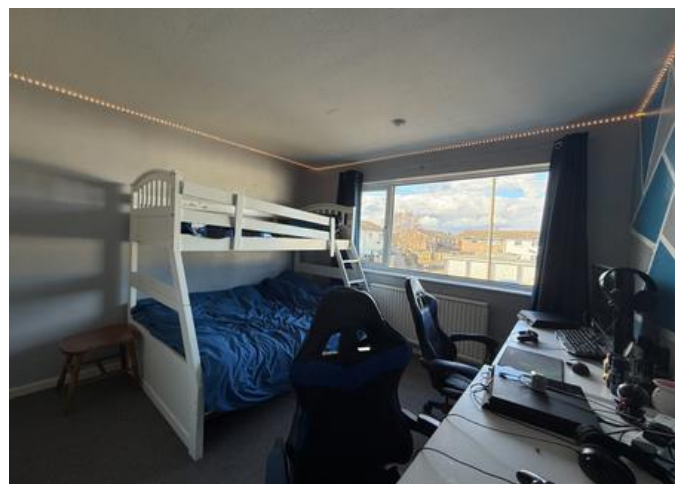
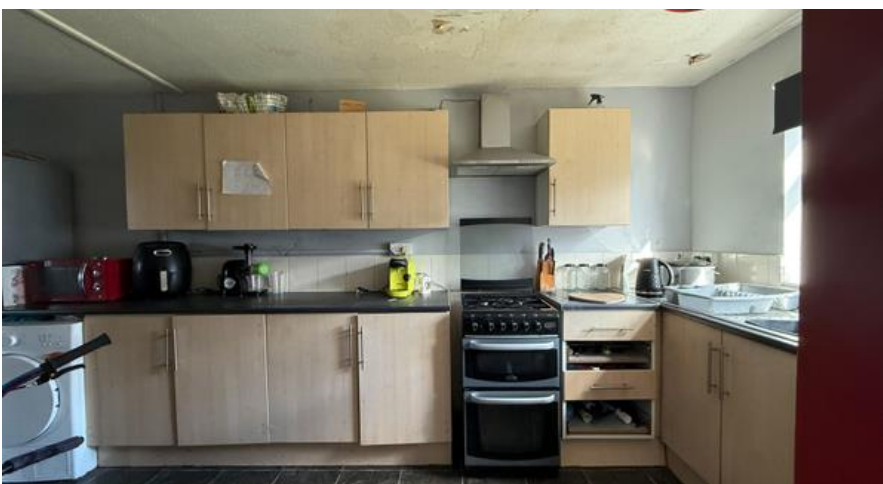
1



2

When it comes to
property it must be


lovelle



£64,950



A ready made BTL investment opportunity.

Key Features

- Currently LET
- Rent of £5200 per annum
- Three Bed Terrace
- uPVC DG & GCH
- Established Location
- Spacious Accommodation
- EPC rating C
- Tenure: Freehold



****ATTENTION BTL INVESTORS**** Lovelle offer to market this spacious three bedroom mid-terraced house currently LET on an AST producing £5200 rent per annum. Benefitting from uPVC double glazing and gas central heating throughout and having accommodation briefly comprising of; entrance hall, cloakroom, kitchen, lounge and dining area, three bedrooms and bathroom. Located within a well established area of Immingham Town and position well for ease of access to local amenities. Viewings are advised.

Measurements

Lounge 3.31m X 4.17m
Dining Area 2.33m X 2.34m
Kitchen 3.30m X 5.96m
Bathroom 1.69m X 2.37m
Bedroom 1 2.31m X 4.73m
Bedroom 2 3.40m X 3.79m
Bedroom 3 2.47m X 2.36m

Disclaimer

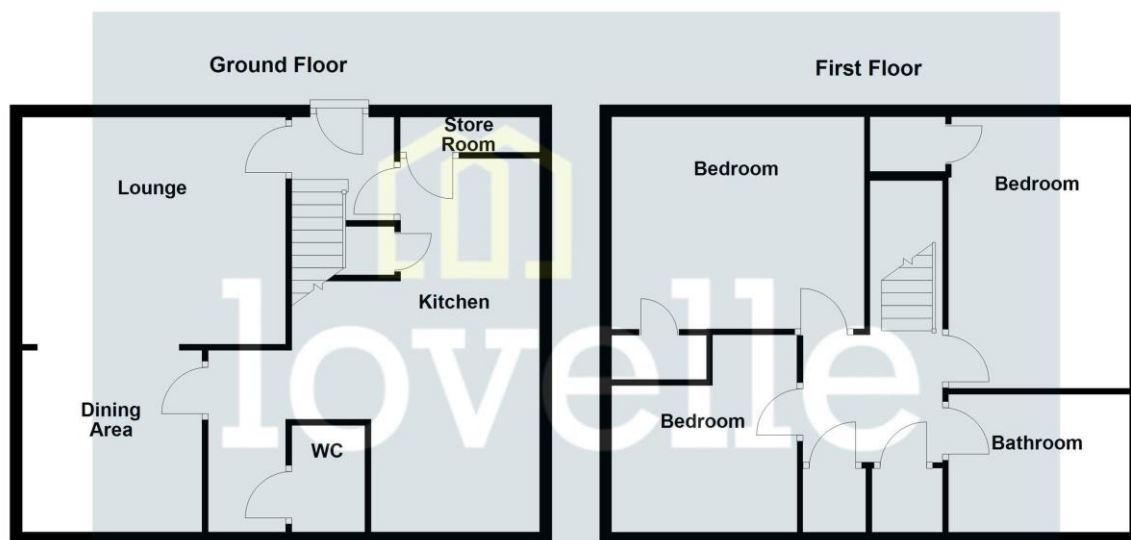
We endeavour to make our sales particulars accurate and reliable, however, they do not constitute or form part of an offer or any contract and none is to be relied upon as statements of representation or fact. Any services, systems and appliances listed in this specification have not been tested by us and no guarantee as to their operating ability or efficiency is given. All measurements have been taken as a guide to prospective buyers only, and are not precise. If you require clarification or further information on any points, please contact us, especially if you are travelling some distance to view.

Mobile and broadband

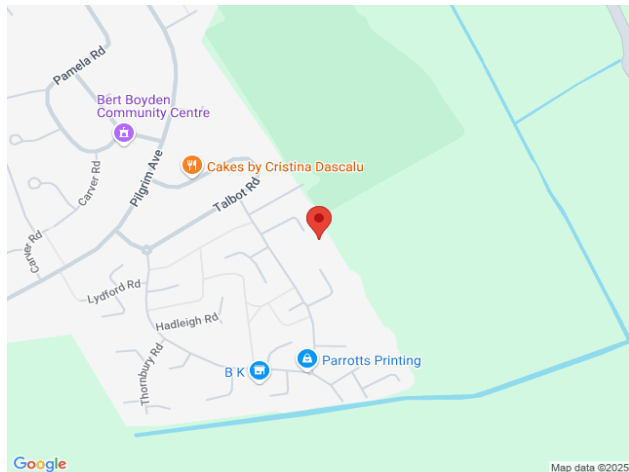
It is advised that prospective purchasers visit [checker . ofcom . org . uk](http://checker.ofcom.org.uk) in order to review available wifi speeds and mobile connectivity at the property.

Non standard construction

Please be advised that the property is of non standard construction, purchasers should discuss this with their lender / mortgage advisor in order to choose a suitable lender.



Please be advised that the floor plan is not drawn to scale and items such as window placements and bathroom/kitchen fixtures are not accurate, the plans are not to be relied upon and are to be used for illustrative purposes only.
Plan produced using PlanUp.



When it comes to **property**
it must be


lovelle

01472 251918

grimsby@lovelle.co.uk

