

Buy. Sell. Rent. Let.



Plot 64 - The Duchess, Kings Grove, Grimsby



5



3



3

When it comes to
property it must be


lovelle



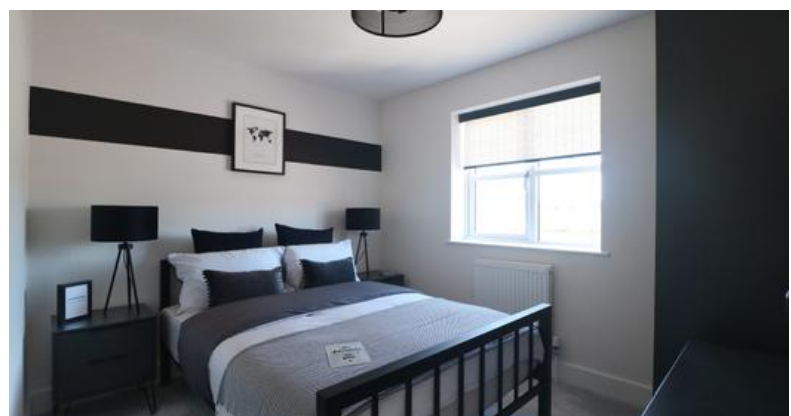
£415,000



PLOT 64 THE DUCHESS - A FIVE BEDROOM DETACHED HOUSE WITH AN INTEGRAL GARAGE ...

Key Features

- Substantial Detached Home
- Quality Kitchen
- Many Extras Included
- Family Sized Accommodation
- 10 Year LABC Guarantee
- High Quality Finish
- EPC rating B
- Tenure: Freehold





Building Excellence
AWARDS 2023
Regional Winner



"WHEN YOU'RE READY FOR SOMETHING SPECIAL"

TAKE A LOOK AT WHAT LOCALLY RENOWNED BUILDERS KEIGAR HOMES HAVE TO OFFER YOU ...

For more information and to be able to reserve off plan today - call our office on 01472 251918

Lounge

3.84m x 5.05m (12'7" x 16'7")

Kitchen / Dining

3.02m x 7.10m (9'11" x 23'4")

Family

3.92m x 3.39m (12'11" x 11'1")

Utility Room

n/a

Cloakroom WC

n/a

First Floor Accommodation

n/a

Bedroom One

3.84m x 5.10m (12'7" x 16'8")

Ensuite

n/a

Bedroom Two

2.06m x 4.07m (6'10" x 13'5")

Bedroom Three

3.12m x 3.02m (10'2" x 9'11")

Bedroom Four

3.05m x 2.96m (10'0" x 9'8")

Family Bathroom

n/a

Second Floor Accommodation

n/a

Bedroom Five

4.06m x 4.37m (13'4" x 14'4")

Ensuite

n/a

Playroom / Study

3.89m x 4.37m (12'10" x 14'4")

Outside the Property

n/a

The rear garden provides the perfect space for children or pets, being fully enclosed.

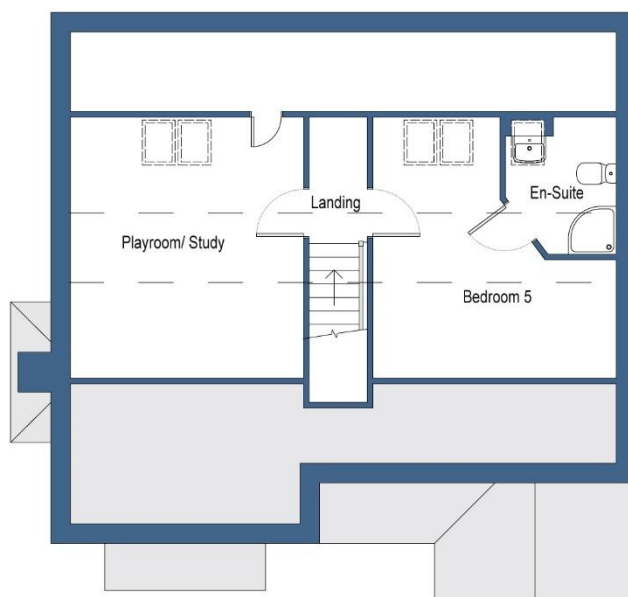
Disclaimer

n/a

We endeavour to make our sales particulars accurate and reliable, however, they do not constitute or form part of an offer or any contract and none is to be relied upon as statements of representation or fact. Any services, systems and appliances listed in this specification have not been tested by us and no guarantee as to their operating ability or efficiency is given. All measurements have been taken as a guide to prospective buyers only, and are not precise. If you require clarification or further information on any points, please contact us,







When it comes to **property**
it must be


lovelle

01472 251918

