

Buy. Sell. Rent. Let.

  
lovelle



Waltham Road, Brigsley



3



2



2

When it comes to  
property it must be

  
lovelle





£465,000

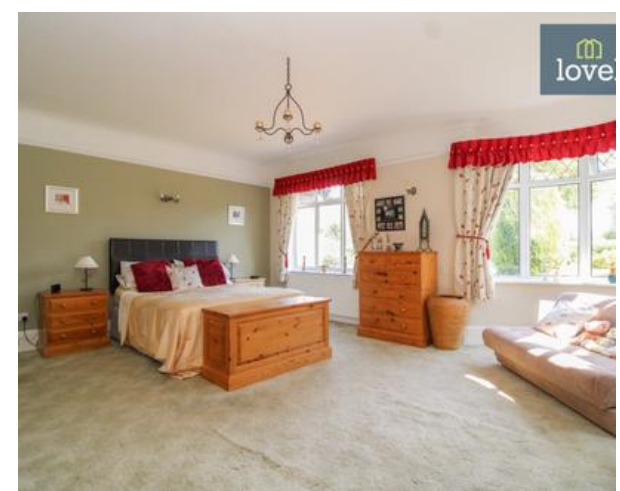
 3
  2
  2

For sale is a charming and spacious detached bungalow in the sought-after village of Brigsley near Waltham, featuring three double bedrooms, two reception rooms, a modern kitchen, and extensive private grounds backing onto open fields, perfect for

### Key Features

- Wonderful detached bungalow
- Sought-after village location
- Generous 0.58-acre plot
- Private grounds with open fields to the rear
- Greenhouse, log store, shed
- Large driveway and garage
- EPC rating D
- Tenure: Freehold







For sale is this wonderful detached bungalow that boasts characterful features and is located in the sought-after village of Brigsley, close to Waltham village. This property is ideal for families and retirees looking for a peaceful location with strong local community ties and access to local amenities and green spaces.

This beautiful bungalow sits on a generous 0.58-acre plot (sts) with private grounds that back onto open fields, providing stunning views and a sense of tranquillity. The well-stocked gardens feature a greenhouse, log store and shed, perfect for those with a green thumb.

The property benefits from uPVC double glazing and gas central heating throughout, ensuring a warm and comfortable home environment. The large driveway and garage offer ample parking space, including room for a large caravan, a unique and sought-after feature.

Internally, the bungalow hosts three spacious double bedrooms. The first bedroom is accentuated with a curved feature bay window that allows natural light to flood the room. The third bedroom comes with built-in wardrobes and an en-suite bathroom equipped with a shower, sink with fitted drawers, and a wc.

The property also boasts two reception rooms. The first room is a spacious lounge with a stone fire surround and a multifuel burner, perfect for cosy evenings. It also features a dining area with stunning garden views and French doors leading to the garden. The second reception room is a sunroom, creating a lovely relaxing living space.

The modern kitchen is finished with high gloss units and oak worktops. It is fitted with an oven and gas hob, and an integrated dishwasher. There is also plumbing for a washing machine. The kitchen opens to the sunroom, creating an open and inviting space for entertaining or relaxing.

The property's main bathroom is fully tiled and features a bath, shower, sink with vanity, and wc.

This bungalow truly is a gem in the heart of the village, offering an abundance of space, character and charm. Its special features and idyllic location make it a perfect home for those seeking a blend of village life and modern comforts.

## Measurements

Hall 3.28m X 3.36m  
 Porch 1.46m X 1.48m  
 Lounge 4.60m X 4.86m  
 Dining Area 4.81m X 2.41m  
 Sun Room 2.38m X 2.54m  
 Kitchen 2.46m X 4.65m  
 Bedroom 1 5.93m X 4.87m  
 Bedroom 2 4.58m X 4.48m  
 Bedroom 3 4.64m X 4.30m  
 Bathroom 2.72m X 2.69m  
 En-suite 2.42m X 3.00m



## Disclaimer

We endeavour to make our sales particulars accurate and reliable, however, they do not constitute or form part of an offer or any contract and none is to be relied upon as statements of representation or fact. Any services, systems and appliances listed in this specification have not been tested by us and no guarantee as to their operating ability or efficiency is given. All measurements have been taken as a guide to prospective buyers only, and are not precise. If you require clarification or further information on any points, please contact us, especially if you are travelling some distance to view.

## Mobile and broadband

It is advised that prospective purchasers visit [checker.ofcom.org.uk](http://checker.ofcom.org.uk) in order to review available wifi speeds and mobile connectivity at the property.

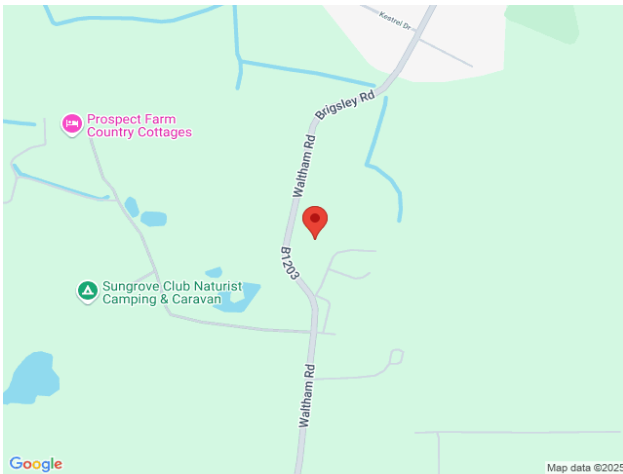


# Ground Floor



Please be advised that the floor plan is not drawn to scale and is to be used for illustrative purposes only.  
Plan produced using PlanUp.

**Waltham Road, Brigsley**



When it comes to **property**  
it must be

**lovelle**

01472 251918

grimsby@lovelle.co.uk

