

Buy. Sell. Rent. Let.


lovelle



Torrington Street, Grimsby

 3  1  2

When it comes to
property it must be


lovelle



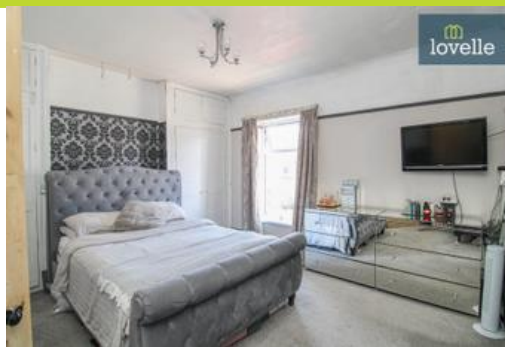
OIRO £114,950



This charming town centre terraced property, ideal for families, couples, and first-time buyers, offers three spacious bedrooms, a stylish bathroom, a well-equipped kitchen, and a stunning rear garden, blending old-world charm with modern convenience

Key Features

- Mid terrace house
- Three bedrooms
- Modern kitchen and bathroom
- Spacious lounge / diner
- Characterful features
- uPVC double glazing and gas central heating
- EPC rating C
- Tenure: Freehold



For Sale: This impressive terraced property is in good condition and boasts a wealth of characterful features that truly set it apart. With its high ceilings, uPVC double glazing, and efficient gas central heating, this property marries old-world charm with modern convenience. It is ideally suited for families, couples, and first-time buyers alike.

Upon entering the property, you are greeted by a welcoming hall with an ornate tiled floor and return stairs leading to the first-floor landing, which is beautifully lit by a sky light. The stunning rear garden is a sight to behold and is accessed via a stable door from the kitchen.

The property offers three spacious bedrooms, the rooms are well-appointed and offer ample space for a growing family or for those who require additional space for home offices or guest rooms.

The property also benefits from a stylish bathroom suite, complete with a rainfall shower over the bath, a WC, a sink, and a towel radiator, all contributing to a relaxing and luxurious bathing experience.

In the heart of the home, you will find a spacious kitchen complete with white high gloss units, wooden worktops, and dual aspect windows that flood the room with natural light. The kitchen is well equipped and offers space for a large oven, plumbing for a washer, and space for a tumble dryer, making it a versatile and practical space for all your culinary needs.

The spacious lounge diner is a welcoming and comfortable space, perfect for entertaining or spending quality time with the family. It features a fire surround with a granite hearth and dual aspect windows with shutter blinds, adding both warmth and elegance to the room.

Located in a town centre location, this property is within easy reach of public transport links and local amenities. The strong local community adds to the appeal, making it a welcoming place to call home.

Overall, this property is a unique find, combining characterful features with modern conveniences in a sought-after location. Its stunning rear garden, spacious rooms, and tasteful decor make it a must-see for anyone looking for a new home. Don't miss out on the opportunity to own this beautiful terraced property.

Measurements

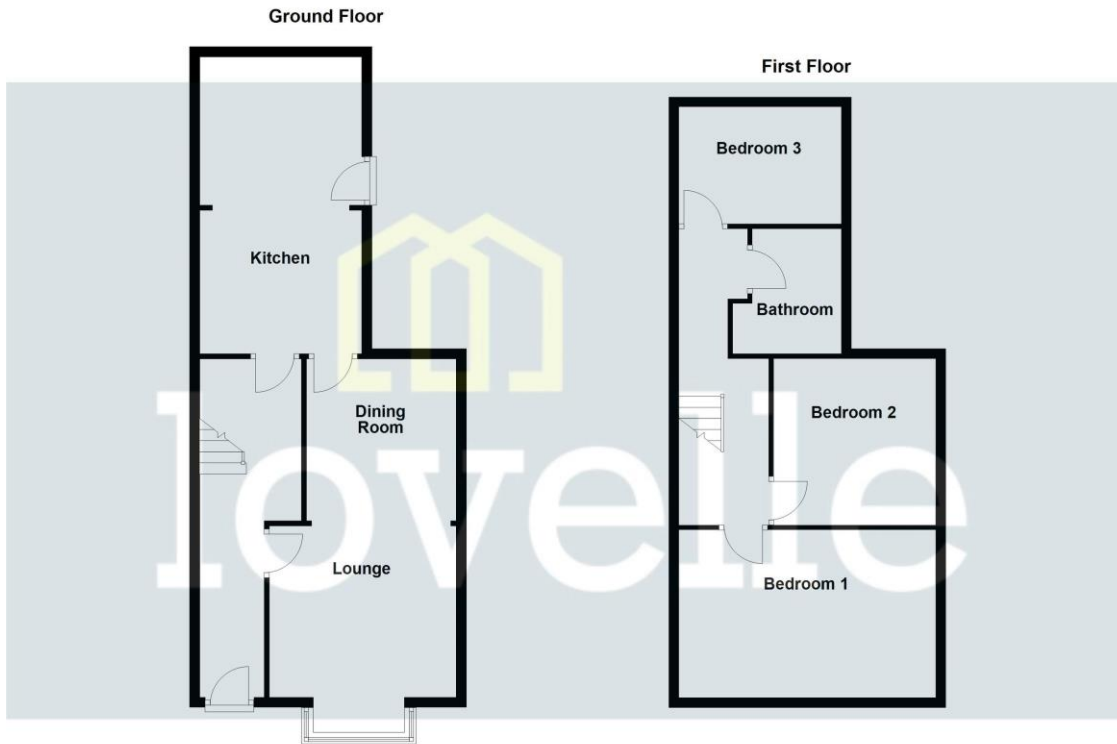
-
Lounge / Diner 8.24m X 3.67m
Kitchen 7.51m X 2.77m
Bedroom 1 4.25m X 3.90m
Bedroom 2 2.89m X 3.64m
Bedroom 3 2.81m X 2.66m
Bathroom 2.78m X 1.61m

Disclaimer

-
We endeavour to make our sales particulars accurate and reliable, however, they do not constitute or form part of an offer or any contract and none is to be relied upon as statements of representation or fact. Any services, systems and appliances listed in this specification have not been tested by us and no guarantee as to their operating ability or efficiency is given. All measurements have been taken as a guide to prospective buyers only, and are not precise. If you require clarification or further information on any points, please contact us, especially if you are travelling some distance to view.

Mobile and broadband

-
It is advised that prospective purchasers visit checker.ofcom.org.uk in order to review available wifi speeds and mobile connectivity at the property.



Please be advised that the floor plan is not drawn to scale and is to be used for illustrative purposes only. Plan produced using PlanUp.

Torrington Street, Grimsby



When it comes to **property** it must be **lovelle**

01472 251918
grimsby@lovelle.co.uk

