

Buy. Sell. Rent. Let.

  
lovelle

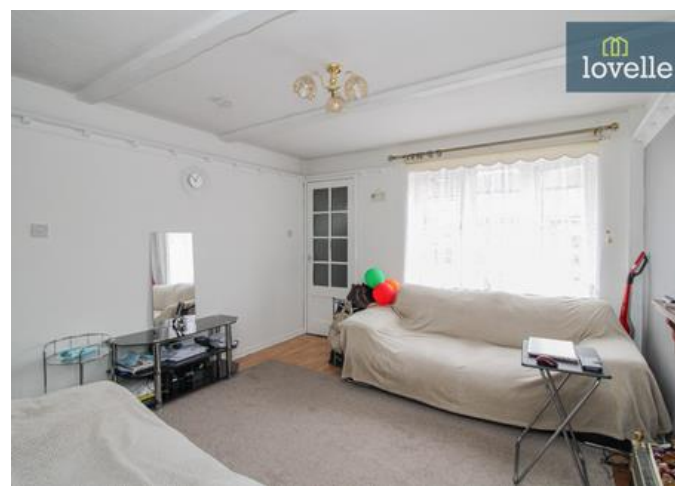
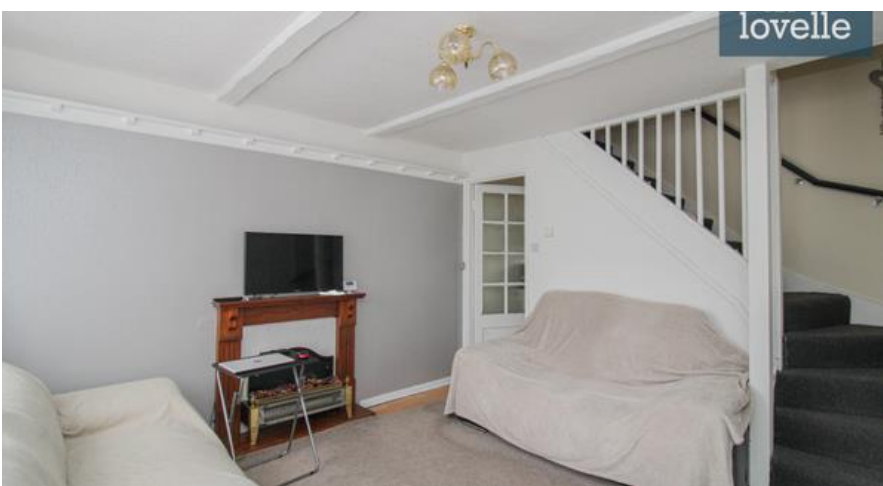


Castle Street, Grimsby



When it comes to  
property it must be

  
lovelle



£77,500



An ideal investment opportunity! A well presented two bedroom mid-link house currently LET on an assured shorthold tenancy producing £525pcm.

### Key Features

- Two Bedrooms
- Lounge
- Kitchen
- Bathroom
- uPVC DG & GCH
- Parking
- EPC rating D
- Tenure: Freehold



A well presented two-bedroom mid-link house benefitting from uPVC double glazing and gas central heating throughout. Offering spacious accommodation comprising of; lounge, kitchen, two bedrooms and bathroom. Externally there is a garden to the rear and the front garden is utilised for off-road parking. Currently LET on an assured shorthold producing £525pcm.

### Measurements

-

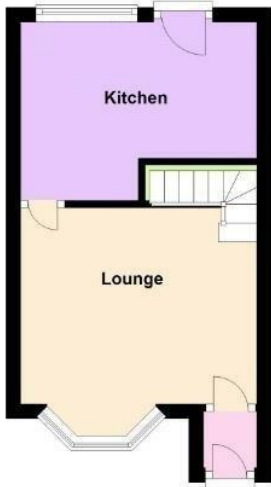
Porch 1.13m X 0.95m  
Lounge 3.65m X 3.56m  
Kitchen 3.55m X 3.74m  
Bedroom 1 3.47m X 3.57m  
Bedroom 2 2.56m X 2.80m  
Bathroom 1.79m X 1.64m

### Disclaimers

-

We endeavour to make our sales particulars accurate and reliable, however, they do not constitute or form part of an offer or any contract and none is to be relied upon as statements of representation or fact. Any services, systems and appliances listed in this specification have not been tested by us and no guarantee as to their operating ability or efficiency is given. All measurements have been taken as a guide to prospective buyers only and are not precise. If you require clarification or further information on any points, please contact us, especially if you are travelling some distance to view.





Ground Floor



First Floor

\*PLEASE BE ADVISED THAT THE PROVIDED FLOORPLANS ARE NOT DRAWN TO SCALE AND SHOULD BE USED FOR GUIDANCE PURPOSES ONLY.



When it comes to **property**  
it must be

  
**lovelle**

01472 251918

grimsby@lovelle.co.uk

