

Buy. Sell. Rent. Let.

The Lovelle logo features a stylized house icon above the word "lovelle" in a lowercase, sans-serif font.

Victoria Court, Grimsby



When it comes to
property it must be

The Lovelle logo, consisting of a stylized house icon above the word "lovelle" in a lowercase, sans-serif font.



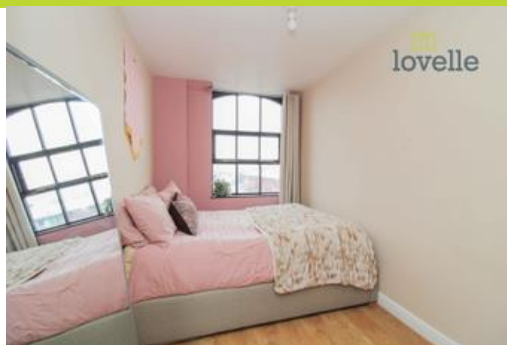
£55,000



A wonderful third floor apartment with lift access located within central Grimsby.

Key Features

- Third Floor Apartment with Lift Access
- Stylishly Presented Throughout
- Modern Kitchen & Bathroom
- Double Bedroom
- Spacious Lounge
- No Onward Chain
- EPC rating D
- Tenure: Leasehold



Lovelle offer to market with NO ONWARD CHAIN this spacious one bedroom apartment situated on the third floor of the popular 'Victoria Court' development, located within the heart of Grimsby Town centre and boasting ease of access to the vast range of local amenities on offer. Immaculately presented throughout with modern fitted kitchen, bathroom and benefitting from timber framed double glazed windows. Externally there is ample off-road parking within a large residential parking area which is monitored by state of the art CCTV. Overall this charming apartment would make an ideal first time purchase, perfect bolt hole for anyone wanting to downsize or buy to let investment.

Hall

N/a

Welcoming L-shaped hall with wood effect laminate flooring. Large storage cupboard.

Lounge

3.27m x 3.06m (10'8" x 10'0")

Stylishly presented with wood effect laminate flooring and two windows.

Kitchen

2.48m x 1.88m (8'1" x 6'2")

Modern wall and base units with wood effect worktops. Stainless steel sink with mixer tap and drainer. Built-in oven, plumbing for washing machine and space for under-counter fridge and freezer. Tiling to splash areas and floor.

Bathroom

2.04m x 1.66m (6'8" x 5'5")

An exquisite fully tiled suite comprising of; panelled bath with shower over, wash hand basin with high gloss vanity unit and WC.

Bedroom

2.13m x 4.28m (7'0" x 14'0")

Tastefully decorated with wood effect laminate flooring. Window

Communal Areas

Well maintained communal areas accessed via a security code system and service each flat, there is lift access and a stairwell to each floor.

Disclaimer

We endeavour to make our sales particulars accurate and reliable, however, they do not constitute or form part of an offer or any contract and none is to be relied upon as statements of representation or fact. Any services, systems and appliances listed in this specification have not been tested by us and no guarantee as to their operating ability or efficiency is given. All measurements have been taken as a guide to prospective buyers only, and are not precise. If you require clarification or further information on any points, please contact us, especially if you are travelling some distance to view.

Ground Floor



When it comes to **property**
it must be


lovelle

01472 251918

grimsby@lovelle.co.uk