

Buy. Sell. Rent. Let.




lovelle

St Nicholas Drive, Grimsby



When it comes to
property it must be


lovelle



£185,000



A beautifully presented semi-detached property in a vibrant community, featuring a spacious Lounge/diner and sun room, stunning kitchen, three bedrooms, luxurious bathroom, garage, and parking, perfect for families, couples, and first-time buyers.

Key Features

- Located in vibrant community with amenities
- Garage and parking included
- Luxurious kitchen and bathroom
- Three bedrooms including two doubles
- Spacious Accommodation
- uPVC Double Glazed & Gas central heated
- EPC rating C
- Tenure: Freehold





Welcome to this immaculate semi-detached property, perfect for families, couples, and first-time buyers alike.

Upon entering, you are greeted by a spacious hall and into a superbly presented reception room, complete with a dining area and doors opening into a sunroom that offers access to the garden. The ideal space for entertaining guests or relaxing with loved ones.

The stunning kitchen is a true highlight of this home, boasting wood-effect units and it is equipped with all the modern amenities you could need, including plumbing for a washer and tumble dryer, an oven, gas hob with extractor and tiled splashbacks.

Moving upstairs, you will find three bedrooms. Bedroom one and two are both doubles, providing ample space for a growing family or guests. The third bedroom is a cosy single, perfect for a child or home office.

The luxurious bathroom features a rain fall shower over the bath, WC and wash hand basin with vanity units. The finishing touch is the towel radiator, ensuring your towels are always warm and ready for use.

Outside, this property offers ample off-road parking and garage along with a wonderful landscaped garden to the rear.

Located in a vibrant community, this home is surrounded by public transport links, nearby schools, green spaces, and walking routes. Perfect for those who enjoy an active lifestyle or want easy access to amenities.

In summary, this property is a gem for those seeking a well-maintained home with modern features and a warm atmosphere. Don't miss the opportunity to make this stunning property your own. Contact us today to arrange a viewing!

Measurements

Lounge / Diner 3.74m X 6.78m

Sun Room 3.50m X 2.76m

Kitchen 2.56m X 5.97m

Bedroom 1 3.47m X 3.46m

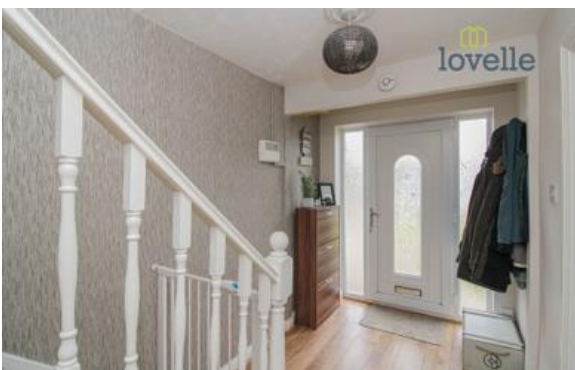
Bedroom 2 3.04m X 3.40m

Bedroom 3 2.25m X 2.09m

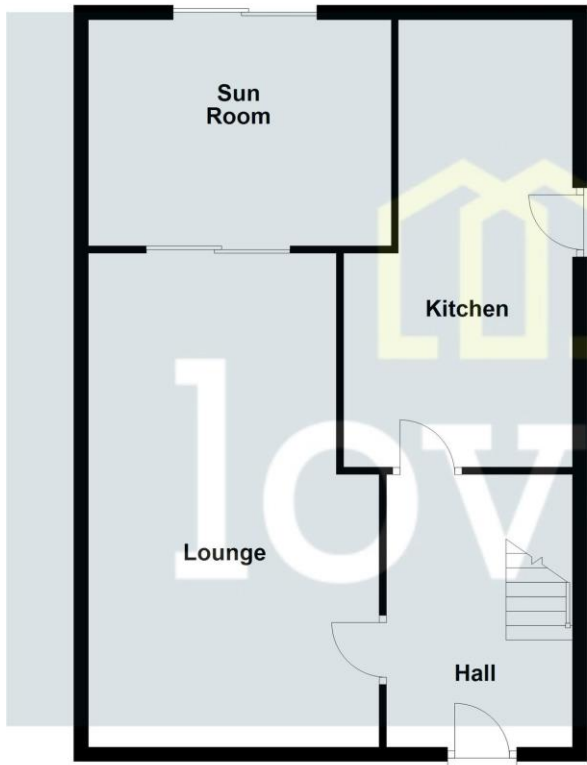
Bathroom 2.52m X 1.63m

Disclaimer

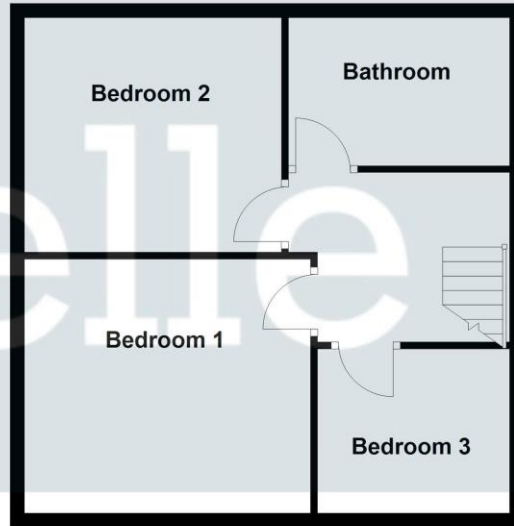
We endeavour to make our sales particulars accurate and reliable, however, they do not constitute or form part of an offer or any contract and none is to be relied upon as statements of representation or fact. Any services, systems and appliances listed in this specification have not been tested by us and no guarantee as to their operating ability or efficiency is given. All measurements have been taken as a guide to prospective buyers only, and are not precise. If you require clarification or further information on any points, please contact us, especially if you are travelling some distance to view.



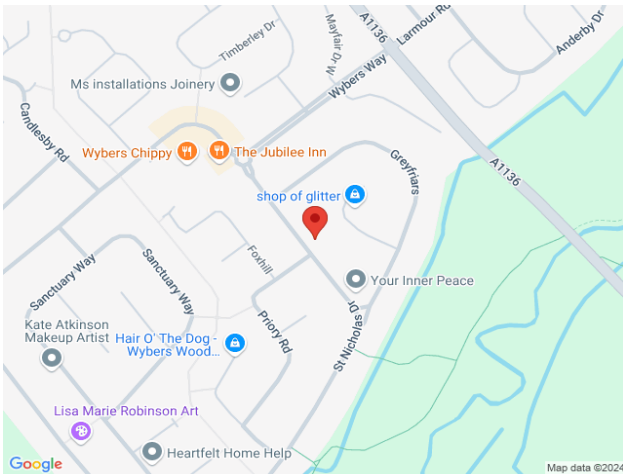
Ground Floor



First Floor



St Nicholas Drive, Grimsby



When it comes to **property**
it must be

lovelle

01472 251918

grimsby@lovelle.co.uk

