

Buy. Sell. Rent. Let.



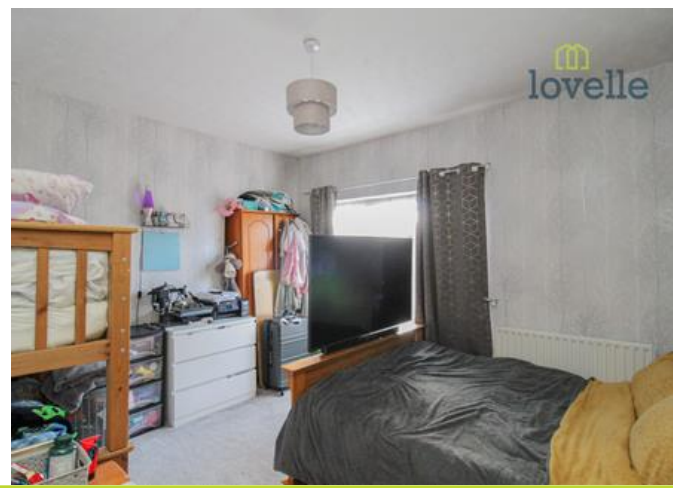

lovelle

Heneage Road, Grimsby



When it comes to
property it must be


lovelle



Offers over £84,950



Mid-terraced house located in central Grimsby.

Key Features

- Mid-Terraced House
- Spacious Accommodation
- Three Bedrooms
- Modern Kitchen
- Family Bathroom
- uPVC Double Glazed
- EPC rating D
- Tenure: Freehold



Lovelle offer to market this spacious three bedroom mid-terraced house located within a well established area of Grimsby Town Centre and boasting ease of access to a vast range of nearby amenities. Well presented throughout with the added benefit of uPVC double glazing and gas central heating. Viewings are highly recommended.

Porch

N/a

Entrance door, wood effect laminate flooring that flows through to the hall.

Entrance Hall

N/a

Stairs lead to the first floor landing.

Lounge / Diner

7.92m x 3.38m (26'0" x 11'1")

Tastefully decorated with wood effect laminate flooring, wall mounted electric fire, two radiators and dual aspect windows to the front and rear aspect.

Kitchen

2.24m x 3.74m (7'4" x 12'4")

High gloss wall and base units with complimentary worktops over incorporating stainless steel sink with mixer tap and drainer, four ring gas hob and oven. Plumbing for washing machine, wall mounted boiler, tiling to splash areas and floor, window and entrance door opening into the rear garden.

Landing

N/a

Decorated to match the hall, built-in storage cupboard.

Bedroom 1

3.97m x 3.66m (13'0" x 12'0")

Tastefully decorated, radiator and window to the front aspect.

Bedroom 2

3.91m x 2.64m (12'10" x 8'8")

Well presented, radiator and window to the rear aspect.

Bedroom 3

2.11m x 2.30m (6'11" x 7'6")

Window to the rear aspect.

Bathroom

1.63m x 1.57m (5'4" x 5'2")

Fully tiled suite comprising of; panelled bath, wash hand basin, wc, towel radiator and window.

Outside

N/a



When it comes to **property**
it must be

**lovelle**

01472 251918
grimsby@lovelle.co.uk

