

Buy. Sell. Rent. Let.



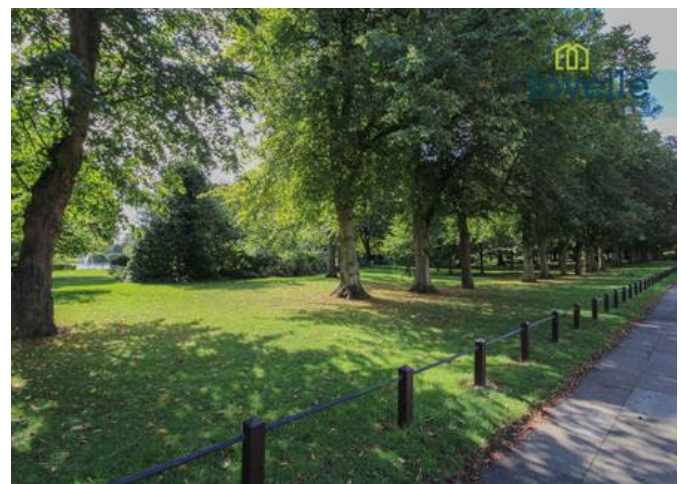

lovelle

Welholme Road, Grimsby



When it comes to
property it must be


lovelle



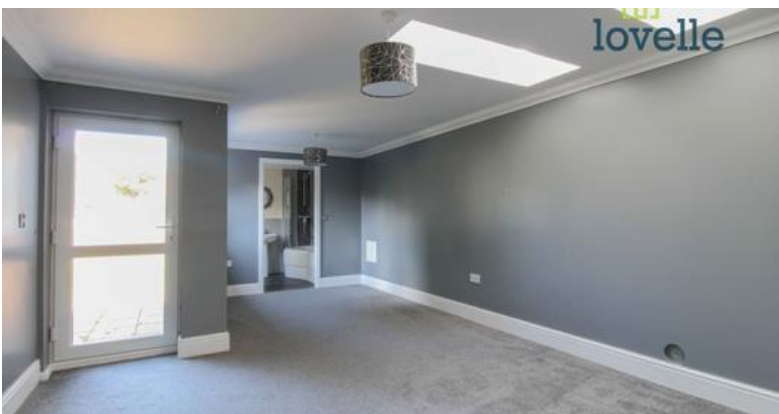
£139,950



A deceptively spacious link-bungalow situated with the heart of Grimsby Town Centre.

Key Features

- Link Bungalow
- Stylishly Presented
- Modern Kitchen & Bathroom
- Spacious Accommodation
- Secure, Gated Development
- Sought After Town Centre Location
- EPC rating C
- Tenure: Freehold





Lovelle offer to market with NO ONWARD CHAIN this deceptively spacious end link bungalow, situated opposite the beautiful tree lined 'Peoples Park' in central Grimsby and positioned well for ease of access to the vast range of local amenities on offer.

Stylishly presented accommodation that benefits from uPVC double glazing, gas central heating and briefly comprises of; welcoming hall with separate wc, large lounge/diner with an exquisite open plan high gloss kitchen with built-in appliances to include: dishwasher, washing machine, fridge freezer, oven, hob and extractor. There is a generous size bedroom and luxury en-suite bathroom, part tiled and comprising of a wc, wash hand basin and bath with shower over. Externally there is an enclosed courtyard style garden to the rear, allocated parking, CCTV and electronic vehicle access security gates.

Measurements

0.00m x 0.00m (0'0" x 0'0")

Kitchen 2.56m X 2.79m

Lounge 5.53m X 4.34m

Separate WC 1.75m X 0.90m

Bedroom 3.77m X 6.10m

Bathroom 2.46m X 1.95m

Disclaimer

0.00m x 0.00m (0'0" x 0'0")

We endeavour to make our sales particulars accurate and reliable, however, they do not constitute or form part of an offer or any contract and none is to be relied upon as statements of representation or fact. Any services, systems and appliances listed in this specification have not been tested by us and no guarantee as to their operating ability or efficiency is given. All measurements have been taken as a guide to prospective buyers only, and are not precise. If you require clarification or further information on any points, please contact us, especially if you are travelling some distance to view.



Ground Floor



When it comes to **property**
it must be


lovelle

01472 251918

grimsby@lovelle.co.uk