

Buy. Sell. Rent. Let.



Durban road , Grimsby



3



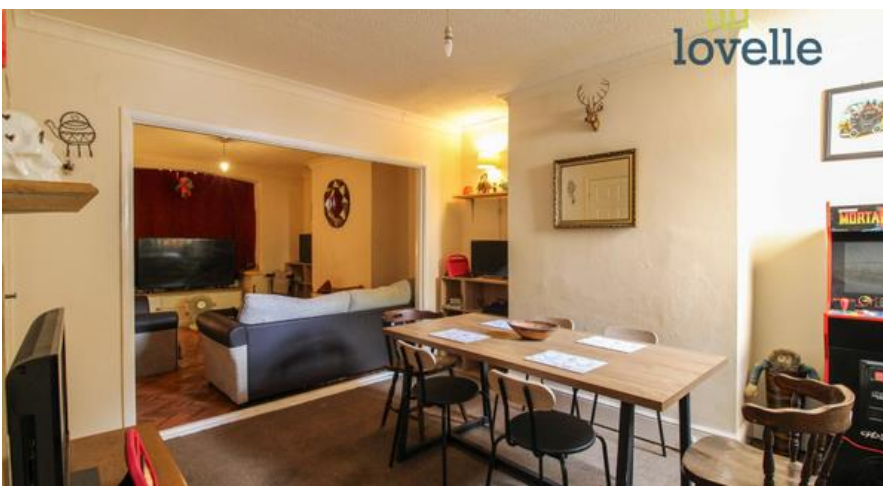
1



2

When it comes to
property it must be


lovelle



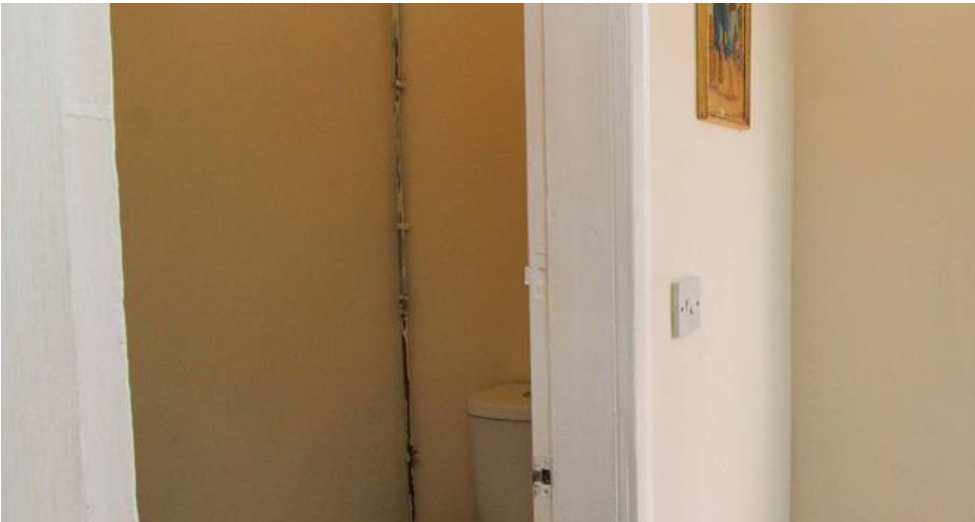
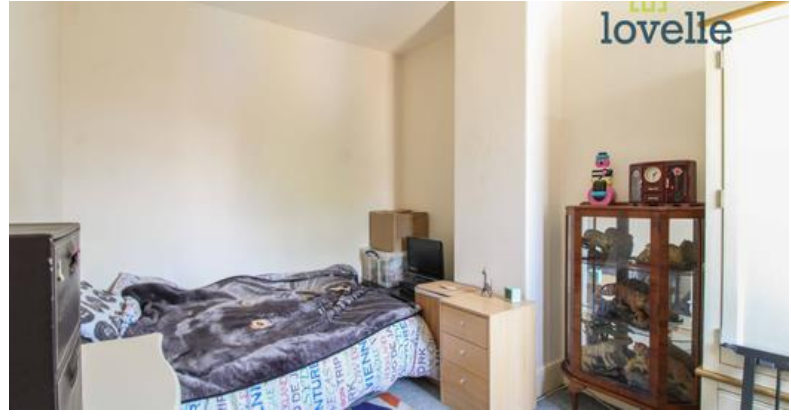
Offers over £74,950.



A spacious three-bedroom mid-terrace house.

Key Features

- Mid-Terrace House
- Three Bedrooms
- Two Reception Rooms
- Modern Kitchen
- Family Bathroom
- Town Centre Location
- EPC rating C
- Tenure: Freehold



Lovelle offers to market this ideal investment opportunity, currently LET on an AST producing £455pcm.

A spacious and well-presented three-bedroom mid-terrace house that benefits from uPVC double glazing and gas central heating throughout. To the ground floor there is a spacious lounge/diner, well fitted high gloss kitchen and a rear porch with separate WC. To the first floor there are three bedrooms and family bathroom. Externally there are gardens to both the front and rear.

Located within a popular, well established residential area of Grimsby Town Centre and positioned well for ease of access to the vast range of amenities on offer. Viewings are highly recommended.

Room Measurements

Lounge 3.30m X 3.61m
Dining Room 3.36m X 3.64m
Kitchen 4.39m X 2.57m
Rear Lobby & Cloakroom 1.39m X 2.58m
Bedroom 1 3.65m X 4.32m
Bedroom 2 2.61m X 3.62m
Bathroom 1.58m x 2.33m
Bedroom 3 3.05m X 2.58m

Disclaimer

We endeavour to make our sales particulars accurate and reliable, however, they do not constitute or form part of an offer or any contract and none is to be relied upon as statements of representation or fact. Any services, systems and appliances listed in this specification have not been tested by us and no guarantee as to their operating ability or efficiency is given. All measurements have been taken as a guide to prospective buyers only and are not precise. If you require clarification or further information on any points, please contact us, especially if you are travelling some distance to view.





When it comes to **property**
it must be


lovelle

01472 251918
grimsby@lovelle.co.uk

