

Buy. Sell. Rent. Let.



lovelle



Horseshoe Close, Grimsby



3



2



1

When it comes to  
property it must be



lovelle



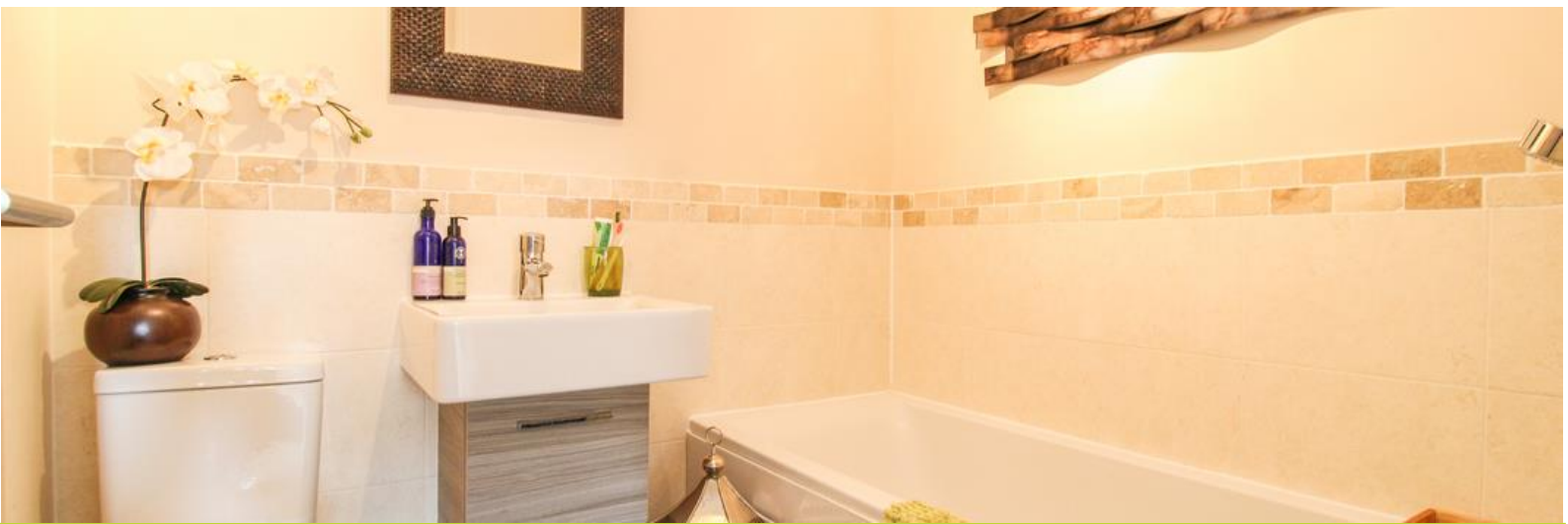
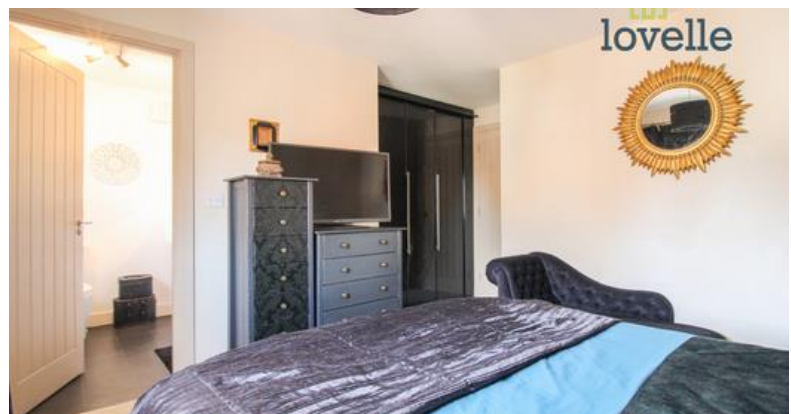
**£199,950**



A stunning three bedroom semi-detached house located within the ever popular village of Scartho.

### Key Features

- Modern Semi-Detached House
- Spacious Accommodation
- Three Bedrooms
- Two Bathrooms & Cloakroom
- Popular Village Location
- Off-Road Parking & Garage
- EPC rating TBC
- Tenure: Freehold





Lovelle offer to market with NO ONWARD CHAIN this modern semi-detached house, built by reputable builders 'Cyden Homes' in 2011. Located within a popular residential area of sought after village, Scartho and positioned well for ease of access to the vast range of local amenities.

Offering spacious and well presented accommodation that benefits from uPVC double glazing and gas central heating throughout. The ground floor has a magnificent open plan living style, with a generous size lounge and stylish high gloss kitchen/diner with a built in oven, gas hob, extractor hood, 1 & 1/4 sink and dishwasher. There is a ground floor cloakroom with a wash hand basin and wc that is positioned underneath the stairs and welcoming hallway with a modern composite entrance door. To the first floor are three excellent size bedrooms, family bathroom and en-suite shower room that serves bedroom 1.

Externally there is a fully enclosed rear garden, driveway and single garage located at the rear of the property.

## Room Measurements

Hall 1.91m X 5.01m

Lounge 3.30m X 5.01m

Kitchen/Diner 3.04m X 5.34m

Cloakroom 1.59m X 0.80m

Bedroom 1 3.67m X 4.02m

En-suite 2.30m X 1.99m

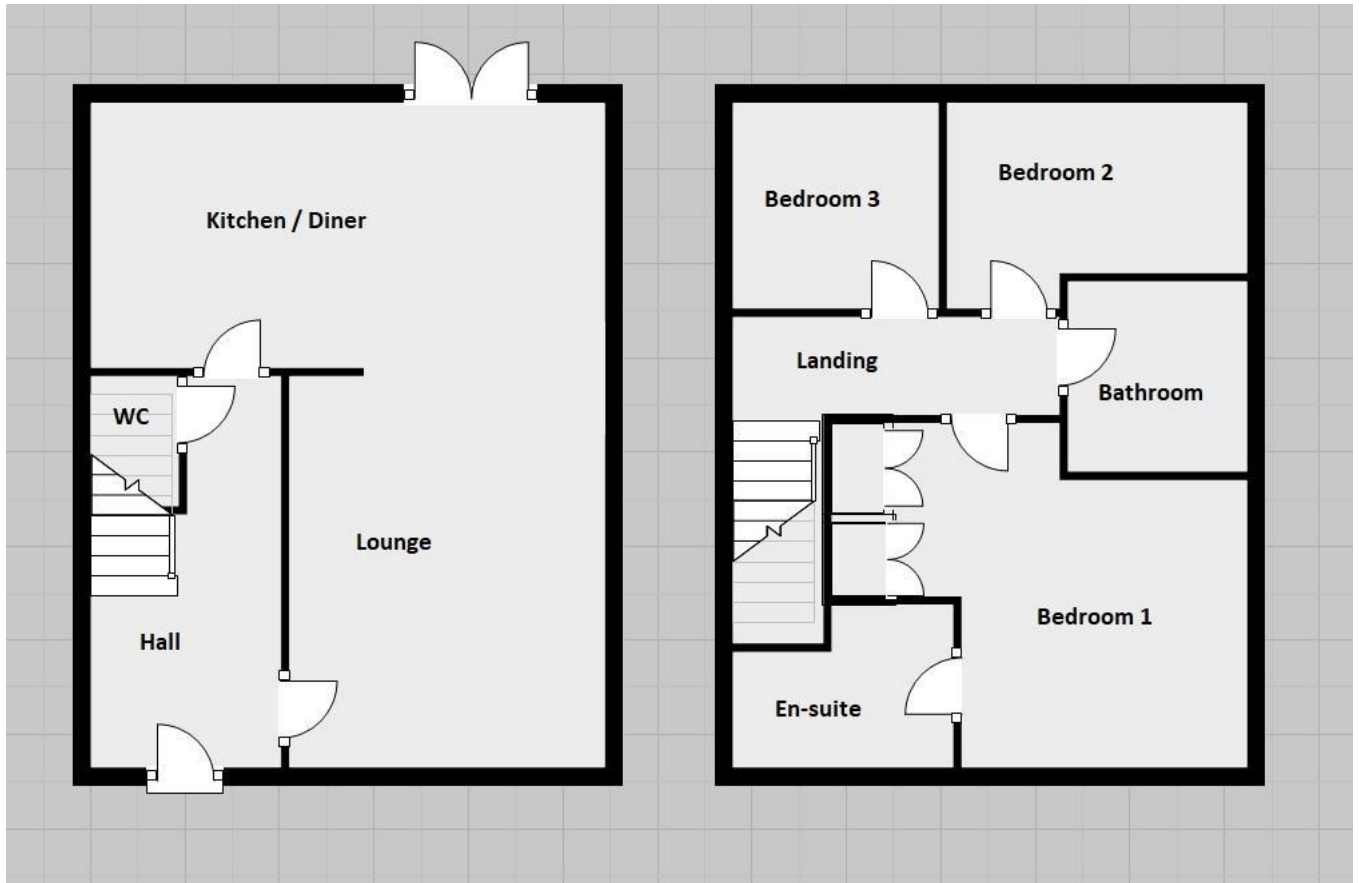
Bedroom 2 2.71m X 2.88m

Bedroom 3 2.59m X 2.95m

Bathroom 2.15m X 1.71m

## Disclaimer

We endeavour to make our sales particulars accurate and reliable, however, they do not constitute or form part of an offer or any contract and none is to be relied upon as statements of representation or fact. Any services, systems and appliances listed in this specification have not been tested by us and no guarantee as to their operating ability or efficiency is given. All measurements have been taken as a guide to prospective buyers only, and are not precise. If you require clarification or further information on any points, please contact us, especially if you are travelling some distance to view.



When it comes to **property**  
it must be

  
**lovelle**

01472 251918  
grimsby@lovelle.co.uk