



[iwestates.com](https://www.iwestates.com)

111 Skyline House Swingate, Stevenage, Hertfordshire, SG1 1AP

111 Skyline House Swingate, Stevenage, Hertfordshire, SG1 1AP

£1,350 Per Month

Two bedroom flat, Situated in the centre of town, this apartment offers easy access to local amenities, and an allocated parking space. This Property benefits from a secure entry system and on site concierge and is only 0.2 miles from Stevenage Train Station!!!EXCELLENT FOR COMMUTERS!

EPC Rating D

Council Tax Band C

Holding Deposit £311.00 (Equivalent to 1 weeks rent)

Deposit £1557.00

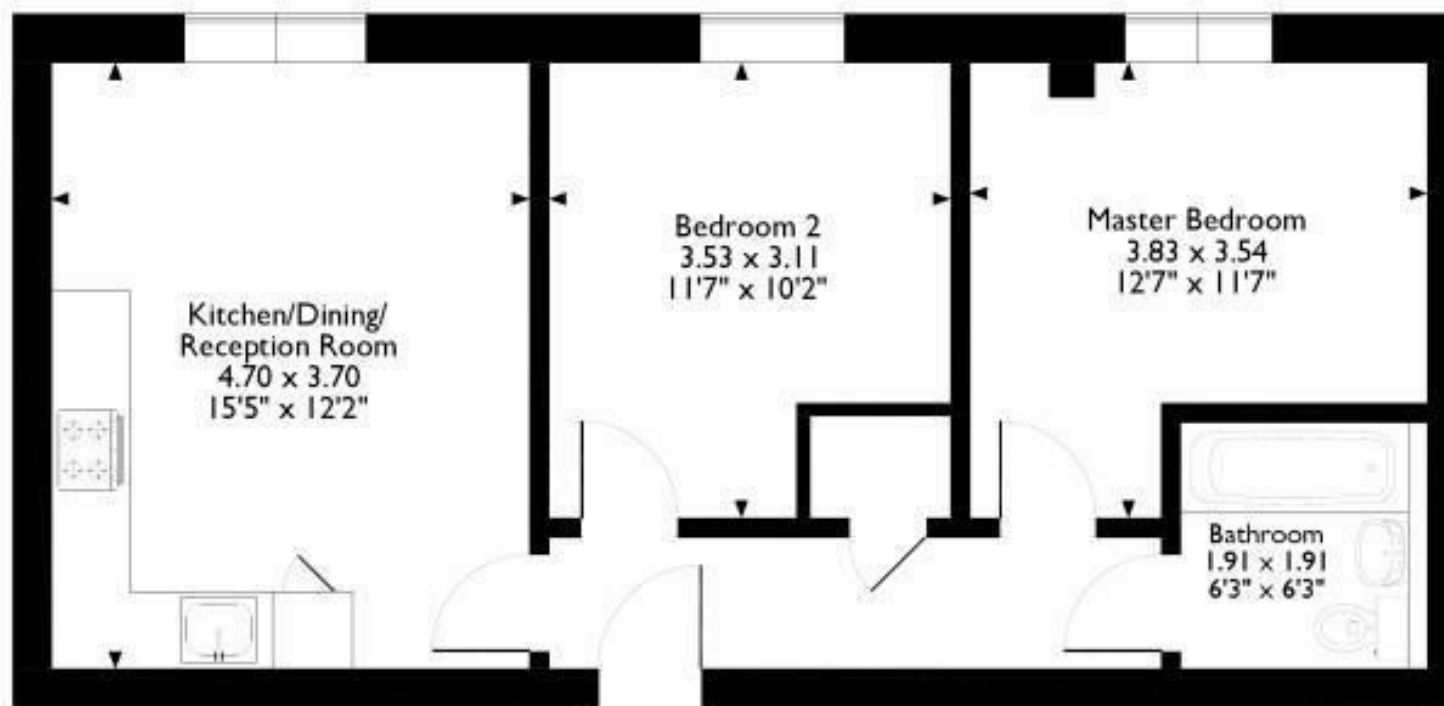
Stevenage Lettings 53 High Street, Stevenage, Hertfordshire SG1 3AQ | 01438 313 393

sl@iwestates.com | www.hunters.com

Skyline House, Stevenage

Approximate Gross Internal Area

549 sqft/50 sqm




Third Floor Flat

Please note that the location of doors, windows and other items are approximate and this floorplan is to be used for illustrative purposes only. Unauthorized reproduction is prohibited.

Energy Efficiency Rating		
	Current	Potential
Very energy efficient - lower running costs		
(92 plus) A		
(81-91) B		
(69-80) C		
(55-68) D	60	60
(39-54) E		
(21-38) F		
(1-20) G		
Not energy efficient - higher running costs		
England & Wales EU Directive 2002/91/EC		

Environmental Impact (CO ₂) Rating		
	Current	Potential
Very environmentally friendly - lower CO ₂ emissions		
(92 plus) A		
(81-91) B		
(69-80) C		
(55-68) D		
(39-54) E		
(21-38) F		
(1-20) G		
Not environmentally friendly - higher CO ₂ emissions		
England & Wales EU Directive 2002/91/EC		

Energy Efficiency Rating

	Current	Potential
Very energy efficient - lower running costs		
(92 plus) A		
(81-91) B		
(69-80) C		
(55-68) D	60	60
(39-54) E		
(21-38) F		
(1-20) G		
Not energy efficient - higher running costs		
England & Wales	EU Directive 2002/91/EC	

These particulars are intended to give a fair and reliable description of the property but no responsibility for any inaccuracy or error can be accepted and do not constitute an offer or contract. We have not tested any services or appliances (including central heating if fitted) referred to in these particulars and the purchasers are advised to satisfy themselves as to the working order and condition. If a property is unoccupied at any time there may be reconnection charges for any switched off/disconnected or drained services or appliances - All measurements are approximate. If you are thinking of selling your home or just curious to discover the value of your property, Hunters would be pleased to provide free, no obligation sales and marketing advice. Even if your home is outside the area covered by our local offices we can arrange a Market Appraisal through our national network of Hunters estate agents.







