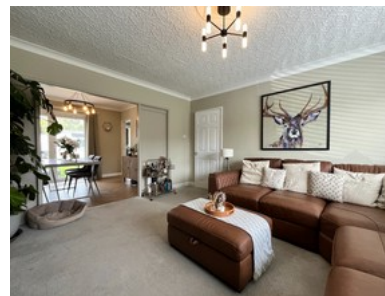


Northfield Road, Beverley

INVITING OFFERS BETWEEN £280,000-£300,000



- ✓ Stylish Semi Detached House In Molescroft
- ✓ Turn-key Home With High-quality Finishes
- ✓ Spacious Rooms With Plenty Of Natural Light
- ✓ Welcoming Hallway And Generous Lounge With Fitted Cabinetry
- ✓ Dining Room And Beautifully Enhanced Kitchen
- ✓ Three Well-sized Bedrooms
- ✓ Luxuriously Appointed Bathroom And Separate Wc
- ✓ Epc C
- ✓ Lawned Frontage With Planted Borders
- ✓ Driveway With Secure Carport And Ample Vehicle Space



Bedroom 3 Bathroom 1 Reception 2

Guide Price

£280,000