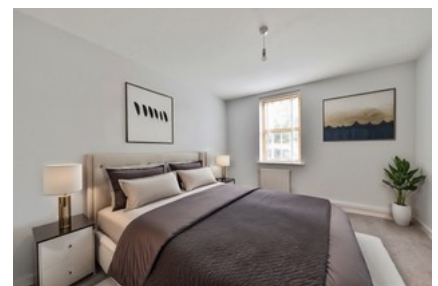
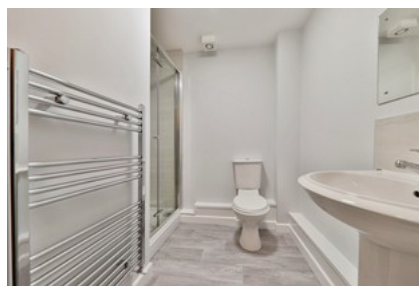




Mill View Road, Beverley

INVITING OFFERS BETWEEN £140,000- £150,000



- ✓ Fully Renovated To A High Standard
- ✓ Two Bedrooms, Perfect For Individuals, Couples, Or Small Families
- ✓ Offstreet Parking, Adding To The Convenience -
- ✓ Ground Floor Living, Ideal For Easy Access
- ✓ Excellent Location Close To Amenities And The Vibrant Beverley Area
- ✓ Ready To Move Into, Making Your Transition Smooth And Effortless
- ✓ Situated In A Friendly Community, Wonderful For Social Interactions And Support
- ✓ Leasehold
- ✓ Council Tax Band B
- ✓ Epc Rating D

Guide Price **£140,000**

Bedroom 2 Bathroom 1 Reception 1