



Price

£1,450 PCM

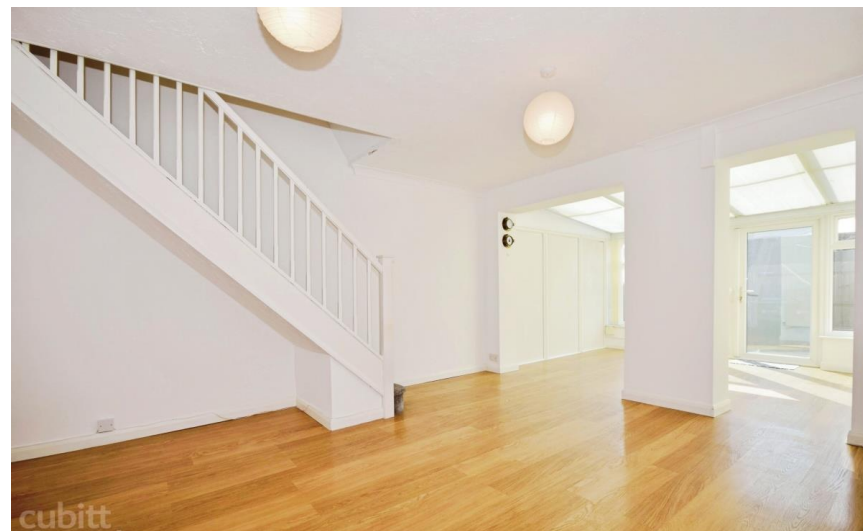
Fees Apply



Available 10/06/25

**Grays Court
Portsmouth PO1**

cubitt&west
Helping you move forwards



Main Features

OFF STREET PARKING

2X EN-SUITES

GREAT LOCATION

EXTENDED LIVING SPACE

Double glazed throughout

Gas central heating

Accommodation

Kitchen 7'5 x 9'5

W/C 2'10 x 3'10

Lounge/Dining Room 26.4 x 14'

Bedroom 1 13'11 x 8'8

En-suite 1 7'8 x 5'6

Bedroom 2 10'1 x 8'4

En-suite 2 7'10 x 5'3



Deposit required is £1,673.08

City of Portsmouth - Council Tax Band Tax Band C

Renting a property is a big commitment and we recommend that you visit the local authority website and these websites which offer helpful information and advice about letting

www.gov.uk/government/publications/how-to-rent

www.gov.uk/private-renting

www.cubittandwest.co.uk/renting/tenancy-fees-individuals/

www.gov.uk/green-deal-energy-saving-measures

Call Portsmouth 023 92653157 ■ cubittandwest.co.uk

IMPORTANT INFORMATION: Please contact our Lettings Team who will confirm the total costs involved in renting this property. For clarification, we wish to inform the prospective tenant that we have prepared these details as a general guide. The agent has not carried out a detailed survey nor tested the services, appliances, or specific fittings (unless otherwise stated), and no warranty can be given as to their condition. All room measurements are taken at floor level. We strongly recommend that all the information which we provide about the property is verified by yourself and your advisers. The contents of this publication are © Cubitt & West, 2015. Cubitt & West is a trading name of Arun Estates Limited Registered in England No. 2597969



Ground Floor

Approx. 46.3 sq. metres (498.7 sq. feet)



First Floor

Approx. 35.6 sq. metres (382.8 sq. feet)

