



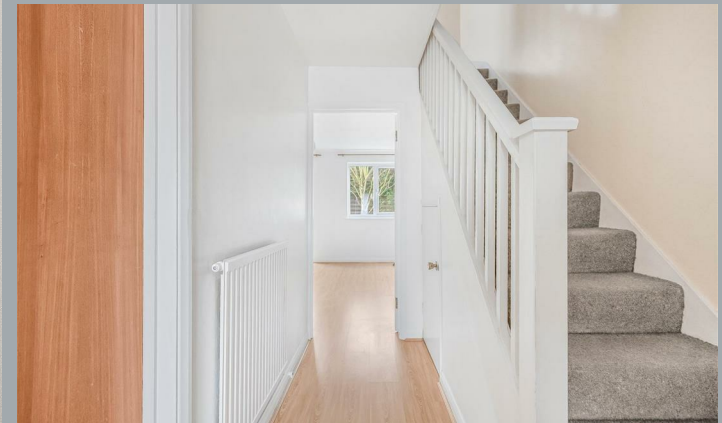
21, Nightingale Court, Hertford

SG14 1PD

Asking Price £400,000



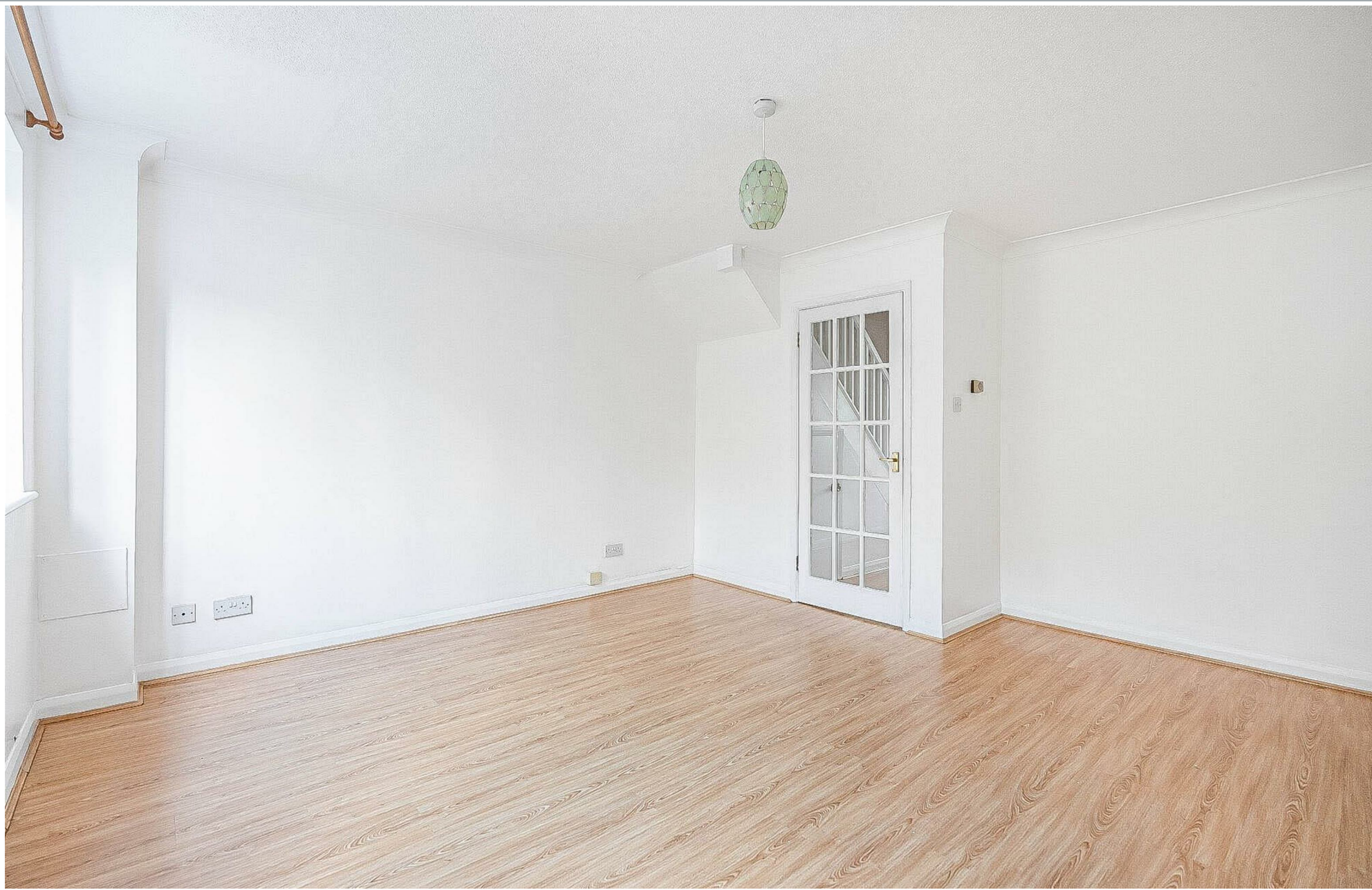
stevenoates.com



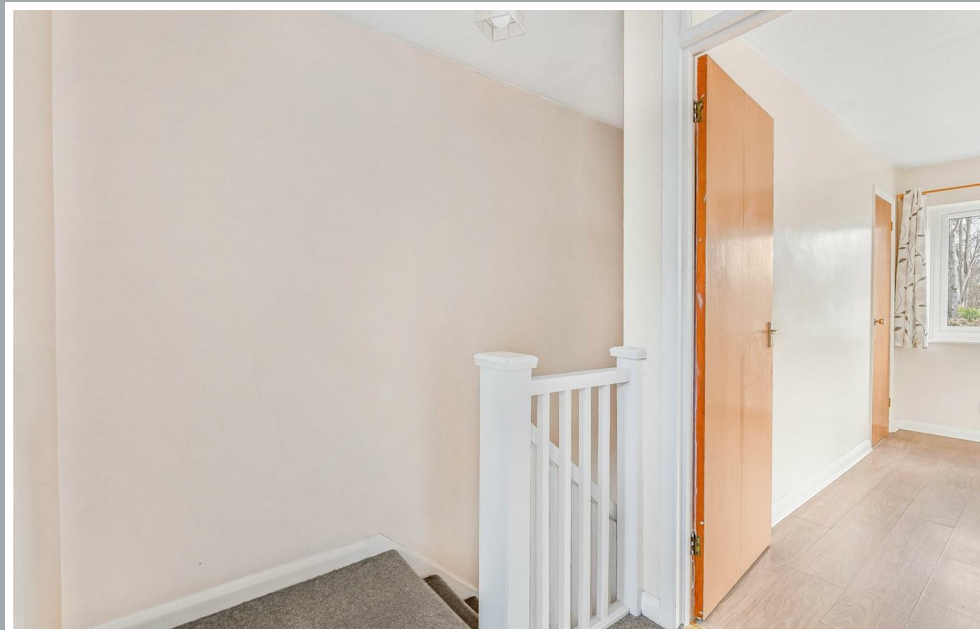
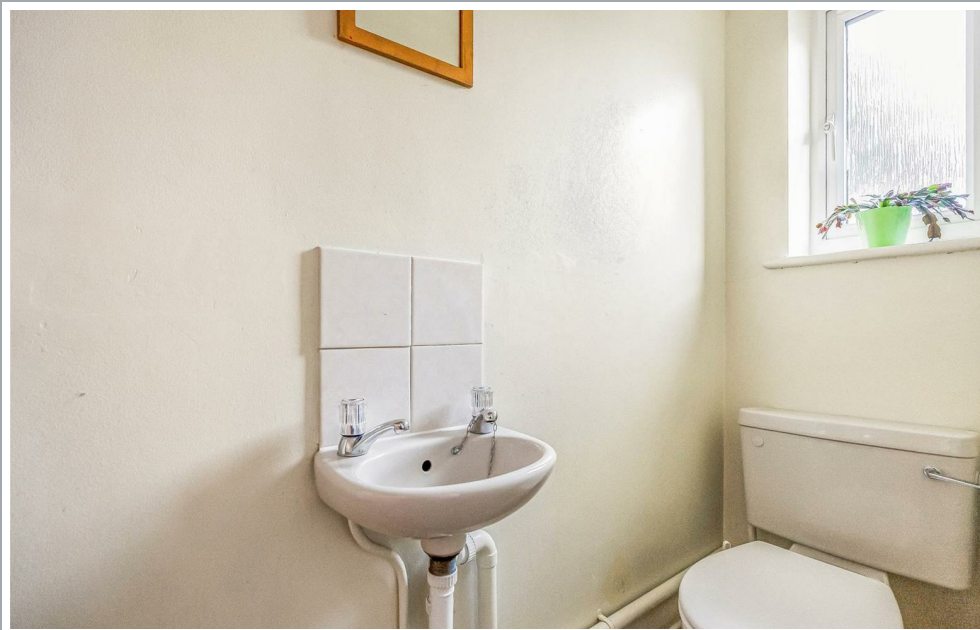
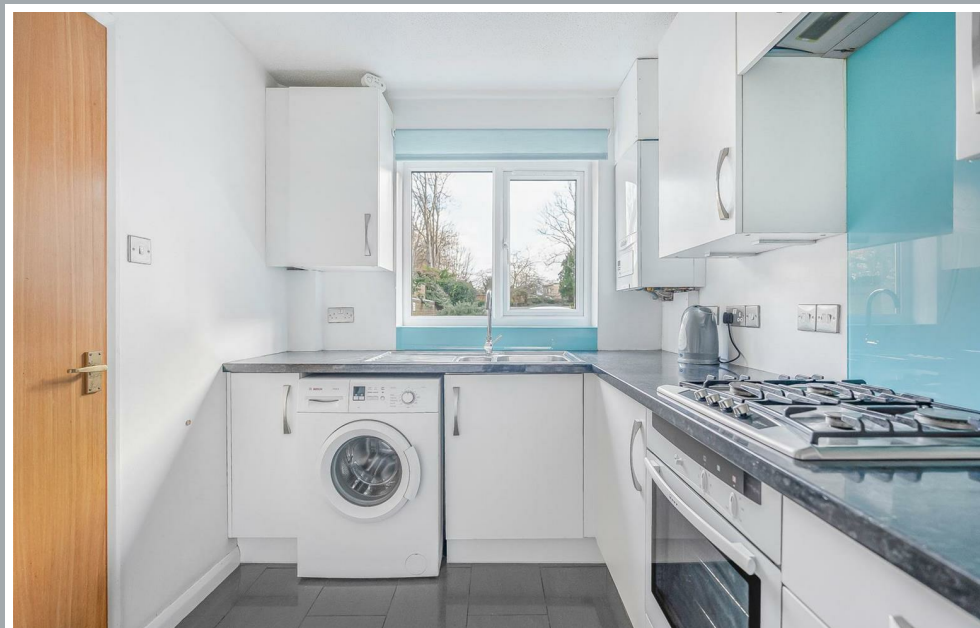
21 Nightingale Court, Hertford, Herts, SG14 1PD

Steven Oates are pleased to offer this rarely available two-bedroom house which is perfectly situated in this popular development which is only a stones throw distance from Hertford North Station and Hertford Town Centre. This home benefits from modern and spacious accommodation throughout with the ground floor benefitting from an entrance hallway and useful downstairs toilet, a modern refitted kitchen, and good size lounge/dinning room at the rear of the property with french doors opening up onto the garden. Upstairs, this home includes two generous size bedrooms both benefitting from storage cupboards and the bathroom suite. Externally, this home includes a private rear garden and parking.

The property is located within a popular development quietly tucked away only a short distance away from the Town Centre. For the commuter, Hertford East mainline station which serves London's Liverpool Street is only 0.7 Miles away and Hertford North Train Station is only 0.3m away.



70 Fore Street, Hertford, Hertfordshire, SG14 1BY



70 Fore Street, Hertford, Hertfordshire, SG14 1BY



70 Fore Street, Hertford, Hertfordshire, SG14 1BY

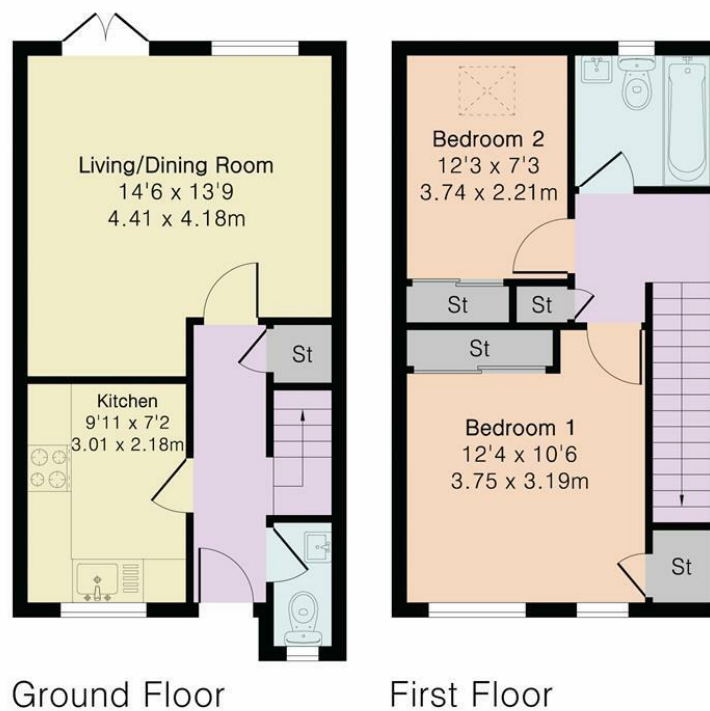


70 Fore Street, Hertford, Hertfordshire, SG14 1BY

Approximate Gross Internal Area 682 sq ft - 63 sq m

Ground Floor Area 344 sq ft – 32 sq m

First Floor Area 338 sq ft – 31 sq m



Floor plan produced in accordance with RICS Property Measurement 2nd Edition. Although Pink Plan Ltd ensures the highest level of accuracy, measurements of doors, windows and rooms are approximate and no responsibility is taken for error, omission or misstatement. These plans are for representation purposes only and no guarantee is given on the total square footage of the property within this plan. The figure icon is for initial guidance only and should not be relied on as a basis of valuation.



These particulars, whilst believed to be accurate are set out as a general outline only for guidance and do not constitute any part of an offer or contract. Intending purchasers should not rely on them as statements of representation of fact, but must satisfy themselves by inspection or otherwise as to their accuracy. No person in this firm's employment has the authority to make or give any representation or warranty in respect of the property.



stevenoates.com