



Oakdene, Burton Lane, Goffs Oak

EN7 6SE

£635,000



stevenoates.com



Oakdene Burton Lane, Goffs Oak, Herts, EN7 6SE

****VENDOR SUITED**** Steven Oates are delighted to offer this 4/5 bedroom spacious family home situated in a sought after location, convenient for local amenities, rail station and the A10 transport links. On the ground floor, there is a generous hallway, through lounge, kitchen/diner and shower room. On the first floor, there are three bedrooms and family bathroom. On the second floor, there are two further bedrooms. Externally, there is off street parking for several cars and a low maintenance, landscaped rear garden with access to the garage which has power and lighting.

Burton Lane is surrounded by the open fields of the Hertfordshire countryside, There is a choice of good local schools close by for the children and an easy commute into London via Cuffley rail station.



70 Fore Street, Hertford, Hertfordshire, SG14 1BY



70 Fore Street, Hertford, Hertfordshire, SG14 1BY

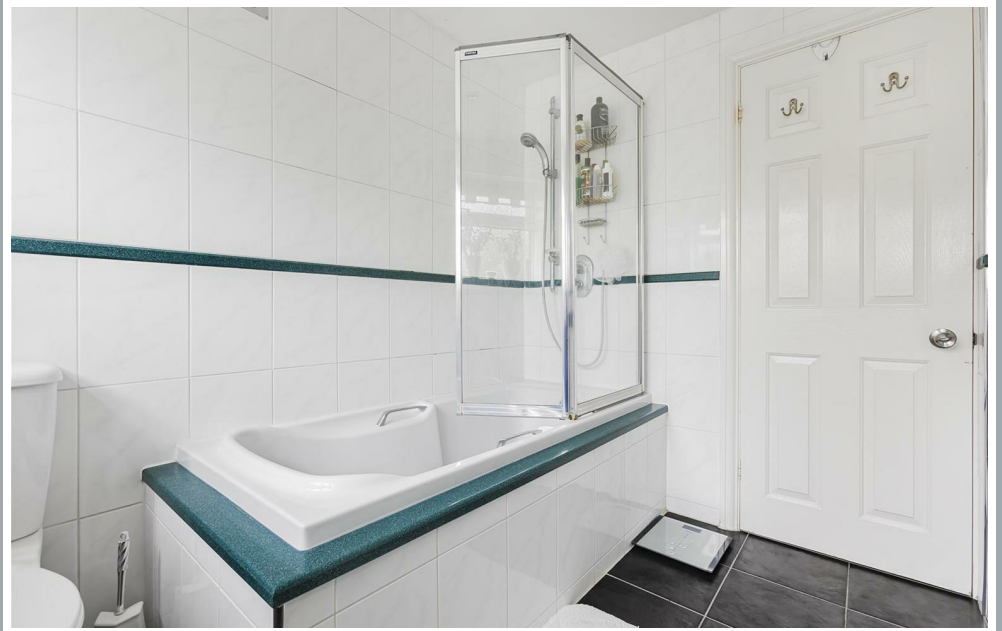


70 Fore Street, Hertford, Hertfordshire, SG14 1BY





70 Fore Street, Hertford, Hertfordshire, SG14 1BY

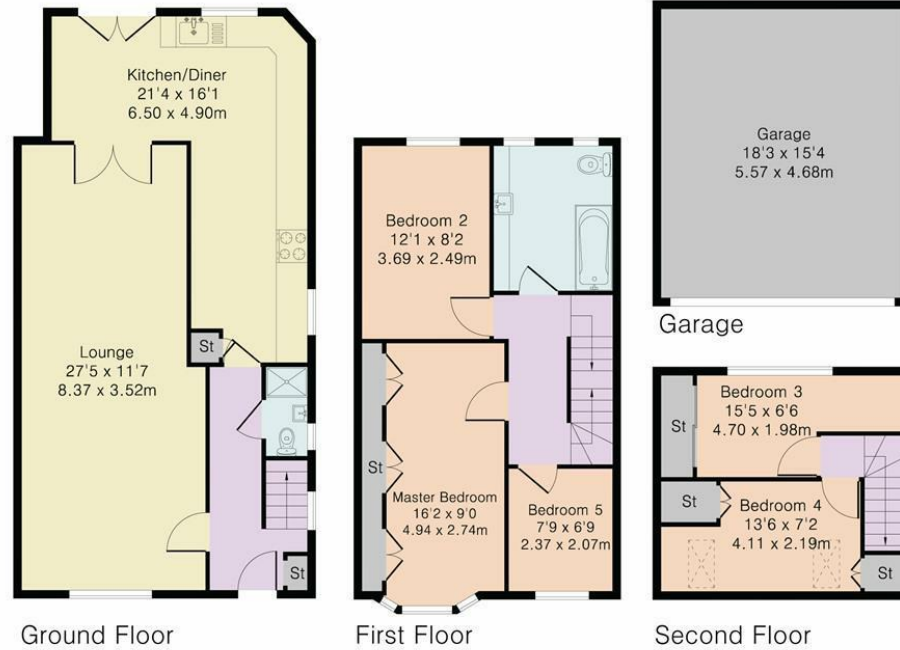


70 Fore Street, Hertford, Hertfordshire, SG14 1BY



70 Fore Street, Hertford, Hertfordshire, SG14 1BY

Approximate Gross Internal Area 1542 sq ft – 143 sq m
 Ground Floor Area 614 sq ft – 57 sq m
 First Floor Area 437 sq ft – 41 sq m
 Second Floor Area 211 sq ft – 19 sq m
 Garage Area 280 sq ft – 26 sq m



Although Pink Plan Ltd ensures the highest level of accuracy, measurements of doors, windows and rooms are approximate and no responsibility is taken for error, omission or misstatement. These plans are for representation purposes only as defined by RICS code of measuring practise. No guarantee is given on total square footage of the property within this plan. The figure icon is for initial guidance only and should not be relied on as a basis of valuation.



These particulars, whilst believed to be accurate are set out as a general outline only for guidance and do not constitute any part of an offer or contract. Intending purchasers should not rely on them as statements of representation of fact, but must satisfy themselves by inspection or otherwise as to their accuracy. No person in this firms employment has the authority to make or give any representation or warranty in respect of the property.

