



140, Salisbury Road, Welwyn Garden City

AL7 3SA

Price Guide £440,000



[stevenoates.com](https://www.stevenoates.com)



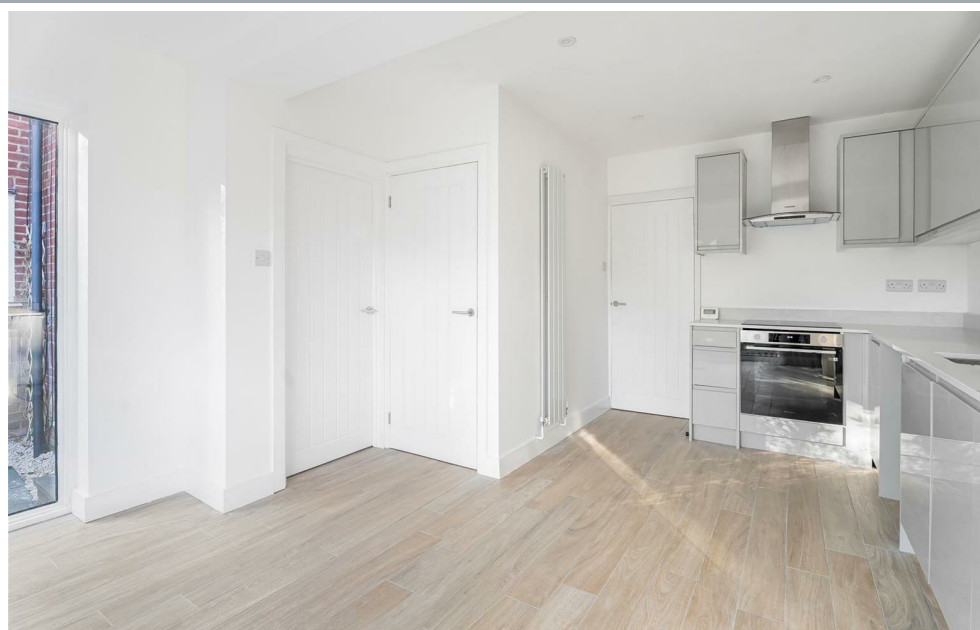
140 Salisbury Road, Welwyn Garden City, AL7 3SA

****CHAIN FREE**** This beautifully refurbished three-bedroom semi-detached tunnel linked family home, offering spacious and versatile living throughout. The property boasts a brand newly fitted kitchen/diner with double doors to the garden, bright and airy living room, a brand new high spec ground floor shower room. The first floor comprises of three generous double bedrooms and a luxury en-suite to the principal bedroom. Ideally situated within walking distance of local amenities, the town centre and train station, this property makes the ideal family home - early viewing is highly recommended!

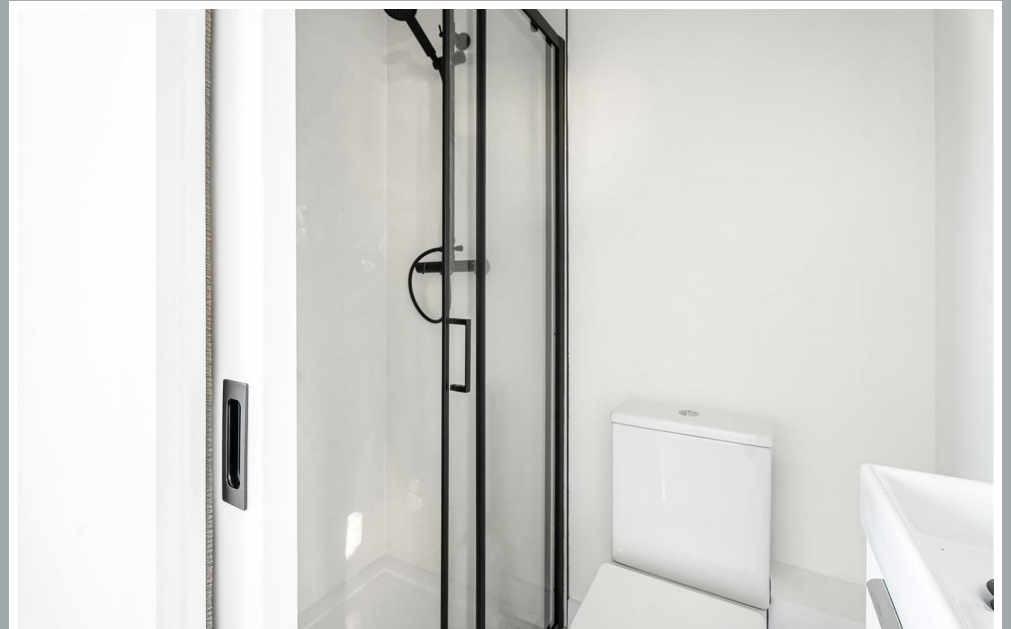
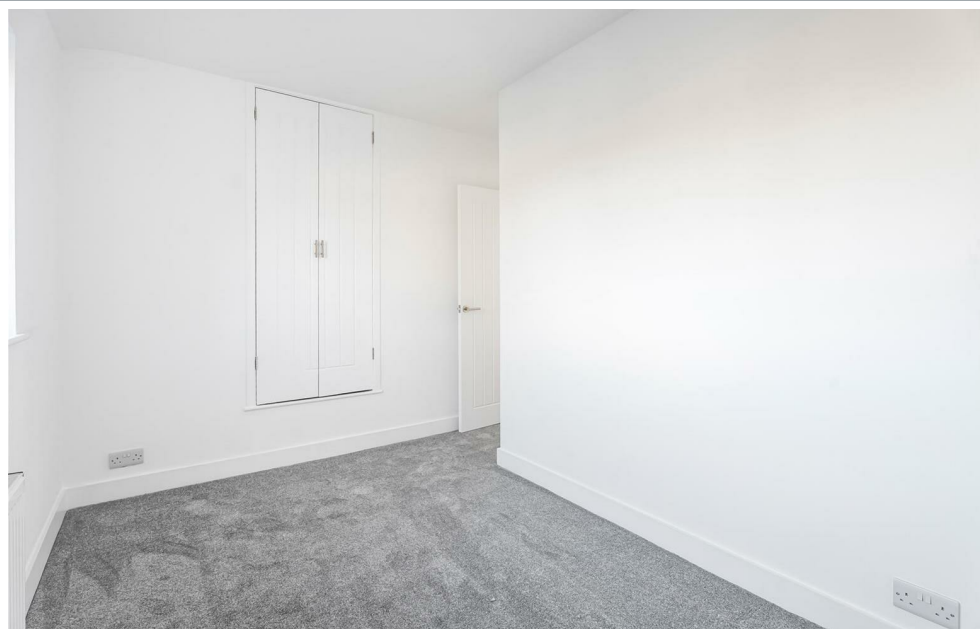
The property is situated within a 20 minutes walk to the town centre and only a short car journey. Welwyn Garden City has a host of shops including John Lewis, Sainsburys, Waitrose and many more. The train station is also located here and goes into London Kings Cross in under 20 minutes.



70 Fore Street, Hertford, Hertfordshire, SG14 1BY



70 Fore Street, Hertford, Hertfordshire, SG14 1BY



70 Fore Street, Hertford, Hertfordshire, SG14 1BY



70 Fore Street, Hertford, Hertfordshire, SG14 1BY



70 Fore Street, Hertford, Hertfordshire, SG14 1BY

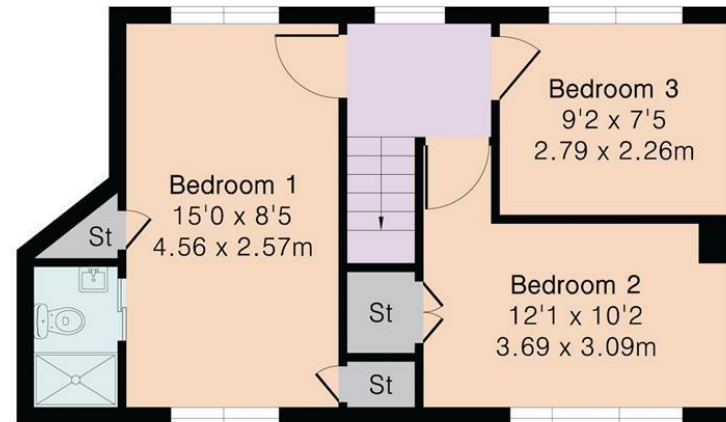
Approximate Gross Internal Area 807 sq ft - 75 sq m

Ground Floor Area 435 sq ft – 40 sq m

First Floor Area 372 sq ft – 35 sq m



Ground Floor



First Floor

These particulars, whilst believed to be accurate are set out as a general outline only for guidance and do not constitute any part of an offer or contract. Intending purchasers should not rely on them as statements of representation of fact, but must satisfy themselves by inspection or otherwise as to their accuracy. No person in this firm's employment has the authority to make or give any representation or warranty in respect of the property.



stevenoates.com