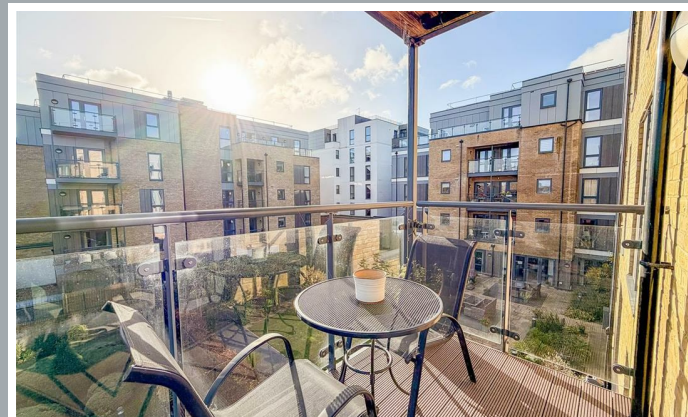


32, Edward House, Pegs Lane, Hertford
SG13 8FQ
Offers Invited £460,000



stevenoates.com



32 Edward House, Pegs Lane, Hertford, SG13 8FQ

Located on the edge of Hertford town centre, this spacious second floor apartment offers two large double bedrooms, including a principal with walk in wardrobe. The bright lounge opens onto a private Sit out BALCONY looking over the lovely communal gardens . Additional features include a fully fitted kitchen, separate WC, and a utility/store room with washing machine plumbing. Residents enjoy landscaped gardens, a Club lounge, Bistro restaurant, Wellness suite, guest accommodation, and a communal lounge with Wi-Fi. The building also offers lift access, a mobility scooter charging room, and secure underground parking space.

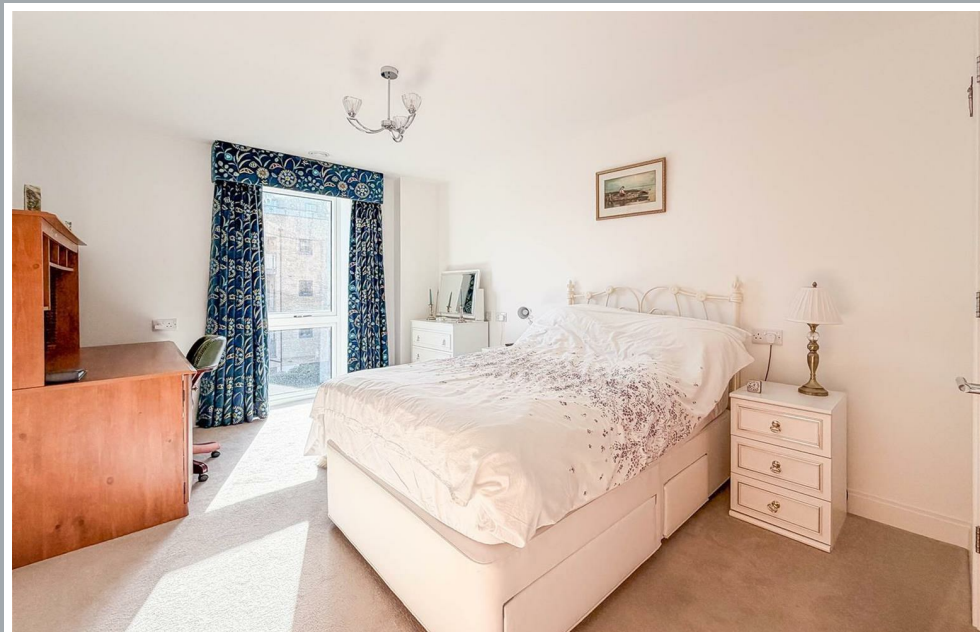
Edward House is located on the edge of Hertford town centre, offering easy access to the town's many shops, restaurants and a choice of supermarkets. The beautiful gardens of Hertford Castle are also within easy reach, along with two mainline train stations serving London.



70 Fore Street, Hertford, Hertfordshire, SG14 1BY



70 Fore Street, Hertford, Hertfordshire, SG14 1BY



70 Fore Street, Hertford, Hertfordshire, SG14 1BY

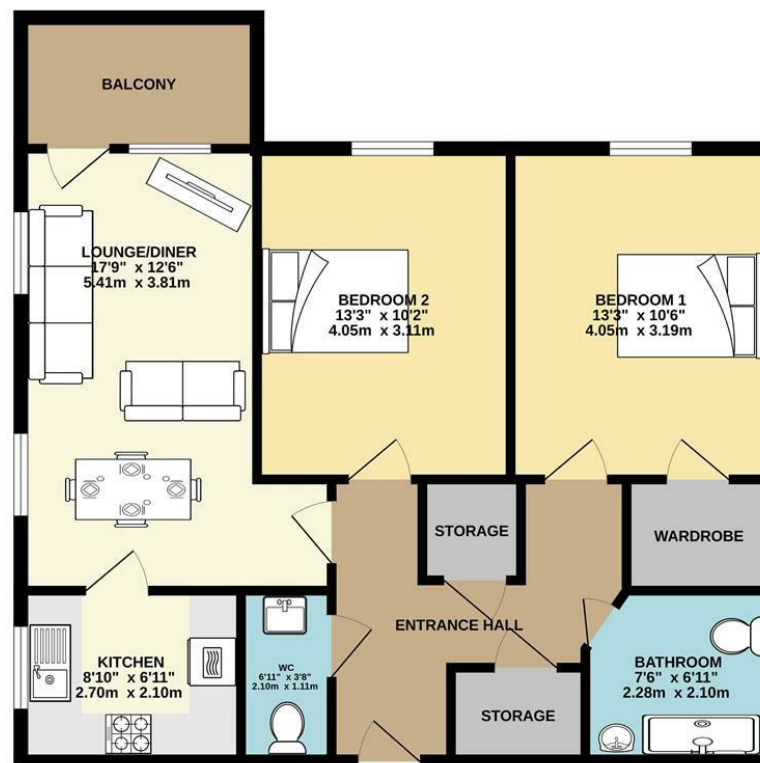


70 Fore Street, Hertford, Hertfordshire, SG14 1BY



70 Fore Street, Hertford, Hertfordshire, SG14 1BY

GROUND FLOOR
793 sq.ft. (73.7 sq.m.) approx.



TOTAL FLOOR AREA: 793 sq.ft. (73.7 sq.m.) approx.

Whilst every attempt has been made to ensure the accuracy of the floorplan contained here, measurements of doors, windows, rooms and any other items are approximate and no responsibility is taken for any error, omission or mis-statement. This plan is for illustrative purposes only and should be used as such by any prospective purchaser. The services, systems and appliances shown have not been tested and no guarantee as to their operability or efficiency can be given.
Made with Metropix ©2025

These particulars, whilst believed to be accurate are set out as a general outline only for guidance and do not constitute any part of an offer or contract. Intending purchasers should not rely on them as statements of representation of fact, but must satisfy themselves by inspection or otherwise as to their accuracy. No person in this firm's employment has the authority to make or give any representation or warranty in respect of the property.



stevengoates.com