



20, Westall Close, Hertford
SG13 8EY
Guide Price £235,000



stevenoates.com



20 Westall Close, Hertford, SG13 8EY

Nestled in the tranquil setting of Westall Close, Hertford, this stunning and rarely available one-bedroom top floor apartment offers a unique opportunity for both first-time buyers and savvy investors. The property is perfectly positioned within a peaceful riverside development, just a stone's throw from the vibrant Hertford Town Centre, providing the ideal balance of serene living and convenient access to local amenities. Upon entering, you will be greeted by a beautifully appointed interior that boasts modern and spacious accommodation. The generous lounge is a highlight of the home, featuring a delightful Juliet balcony that invites natural light, this space is perfect for relaxation or entertaining guests. This apartment also benefits from a great size bedroom with dual aspect windows and there is a luxury refitted shower room. The separate kitchen has been thoughtfully refitted with contemporary fixtures, making it both functional and stylish. This property is not only a charming residence but also an excellent investment opportunity, given its desirable location and modern features. Whether you are looking to make your first step onto the property ladder or seeking a lucrative rental investment, this one-bedroom house in Hertford is sure to impress. Don't miss the chance to make this delightful home your own.

Westall Close is a small development of highly sought after apartments which is quietly tucked away just off West Street which is one of Hertford's most historical residential roads. This property is conveniently positioned for easy access to Hertford town centre itself which offers an excellent choice of local shops, coffee shops and restaurants all within easy walking distance. For the commuter, Hertford North Train Station is only (0.7m) away and Hertford East is (1.3m) away which between them serve London's Liverpool Street, Moorgate and Kings Cross.



70 Fore Street, Hertford, Hertfordshire, SG14 1BY



70 Fore Street, Hertford, Hertfordshire, SG14 1BY



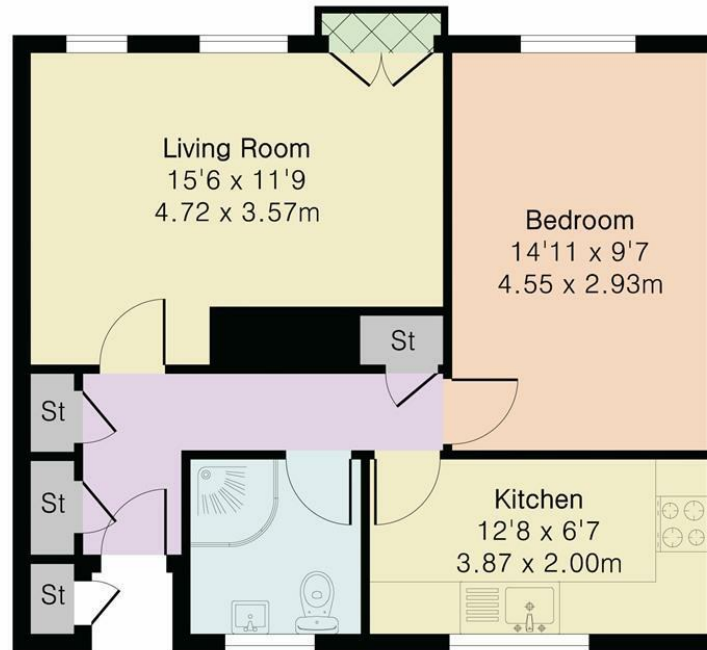
70 Fore Street, Hertford, Hertfordshire, SG14 1BY



70 Fore Street, Hertford, Hertfordshire, SG14 1BY

70 Fore Street, Hertford, Hertfordshire, SG14 1BY

Approximate Gross Internal Area 542 sq ft - 50 sq m



Second Floor



Floor plan produced in accordance with RICS Property Measurement 2nd Edition. Although Pink Plan Ltd ensures the highest level of accuracy, measurements of doors, windows and rooms are approximate and no responsibility is taken for error, omission or misstatement. These plans are for representation purposes only and no guarantee is given on the total square footage of the property within this plan. The figure icon is for initial guidance only and should not be relied on as a basis of valuation.



These particulars, whilst believed to be accurate are set out as a general outline only for guidance and do not constitute any part of an offer or contract. Intending purchasers should not rely on them as statements of representation of fact, but must satisfy themselves by inspection or otherwise as to their accuracy. No person in this firm's employment has the authority to make or give any representation or warranty in respect of the property.



stevenoates.com