



45, Amwell End, Ware  
SG12 9JE

Price Guide £1,100,000



[stevenoates.com](https://www.stevenoates.com)





## Chadwell Lodge, 45 Amwell End, Ware, Herts, SG12 9JE

**\*\* CHAIN FREE \*\*** A Unique Grade II Listed Landmark Residence in the Heart of Ware. Steven Oates are delighted to offer this exceptional detached Grade II Listed mid-19th century stone-built residence, a true landmark property discreetly nestled in a private setting right in the centre of Ware. This stunning home offers deceptively spacious and versatile accommodation, blending a wealth of beautifully preserved original features with high-quality contemporary finishes. The interior is elegantly arranged over two floors, plus a basement, and includes: A grand entrance hall setting the tone for the character and charm throughout, dual-aspect living room filled with natural light, generous formal dining room perfect for entertaining, dedicated study ideal for home working, downstairs WC, spacious family room opening seamlessly into a superbly fitted bespoke kitchen with direct access to the garden, basement level offering two large storage rooms. To the first floor are four double bedrooms, including: two bedrooms with en suite shower rooms. Walk-in wardrobe to the principal bedroom. A well-appointed family bathroom. The property is rich in period detail, including feature fireplaces in most rooms, ornate coving, picture rails, high ceilings, stripped wood flooring, attractive tiled flooring, statement windows, and original working shutters all contributing to its timeless elegance. Outside, the home benefits from a mature walled garden, offering privacy and tranquility, as well as a gated gravel driveway providing off-street parking.

Situated in the very heart of Ware town centre, residents will enjoy immediate access to a wide range of shops, bars, restaurants, and amenities. Ware also boasts excellent transport links, with a mainline railway station offering regular services to London Liverpool Street.





70 Fore Street, Hertford, Hertfordshire, SG14 1BY





70 Fore Street, Hertford, Hertfordshire, SG14 1BY





70 Fore Street, Hertford, Hertfordshire, SG14 1BY



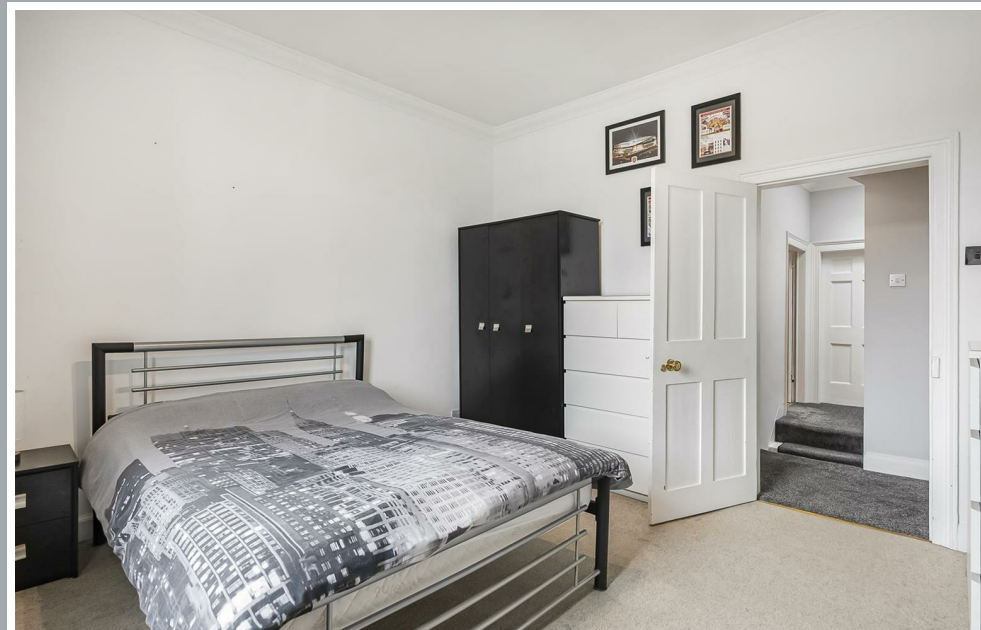






70 Fore Street, Hertford, Hertfordshire, SG14 1BY





70 Fore Street, Hertford, Hertfordshire, SG14 1BY





70 Fore Street, Hertford, Hertfordshire, SG14 1BY



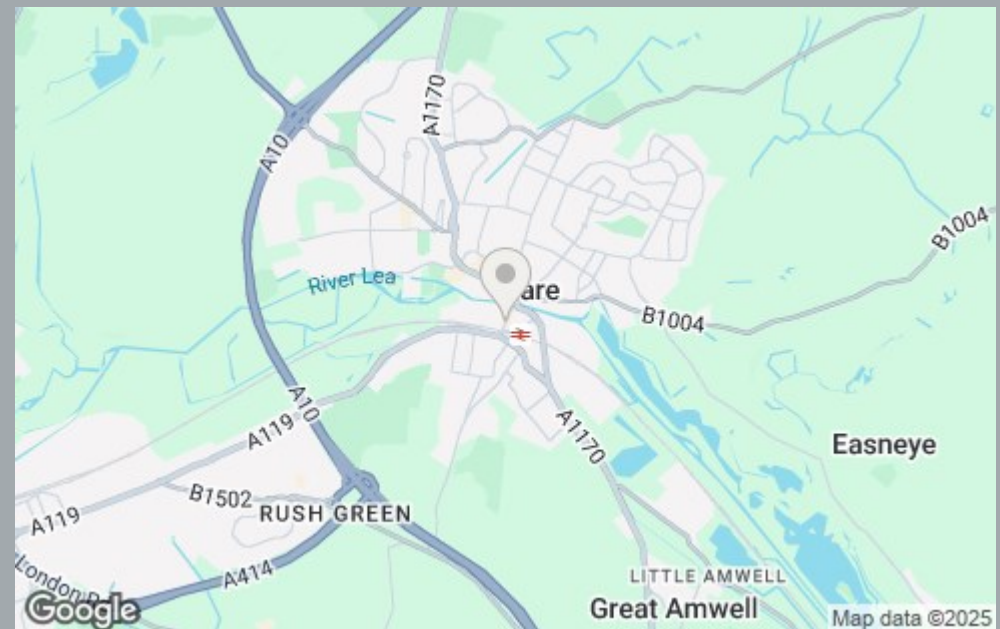






70 Fore Street, Hertford, Hertfordshire, SG14 1BY





70 Fore Street, Hertford, Hertfordshire, SG14 1BY





These particulars, whilst believed to be accurate are set out as a general outline only for guidance and do not constitute any part of an offer or contract. Intending purchasers should not rely on them as statements of representation of fact, but must satisfy themselves by inspection or otherwise as to their accuracy. No person in this firm's employment has the authority to make or give any representation or warranty in respect of the property.



[stevenoates.com](http://stevenoates.com)