



2, Buckwells Field, Bengo

SG14 3FF

Guide Price £580,000



stevenoates.com



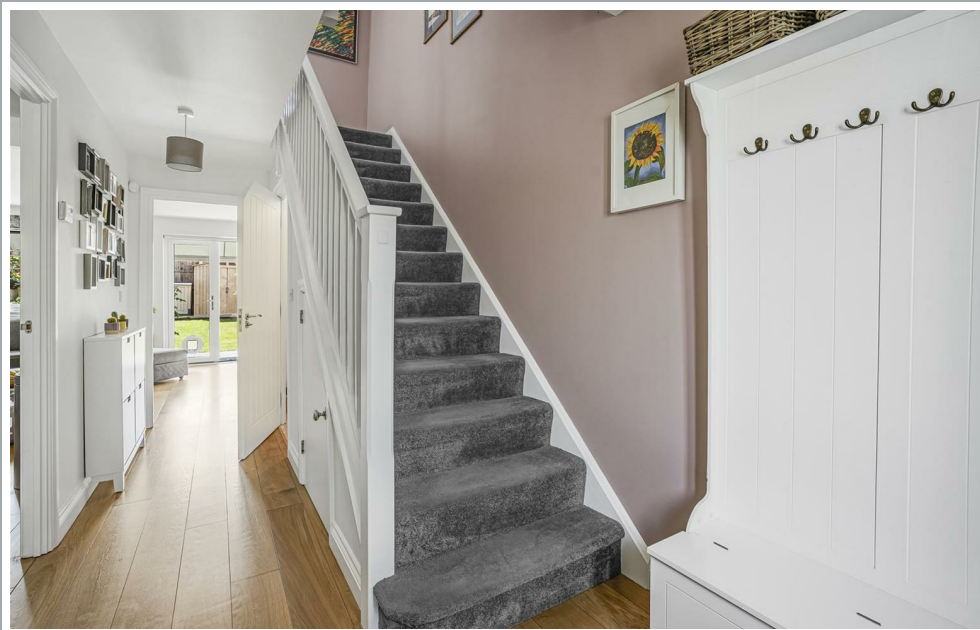
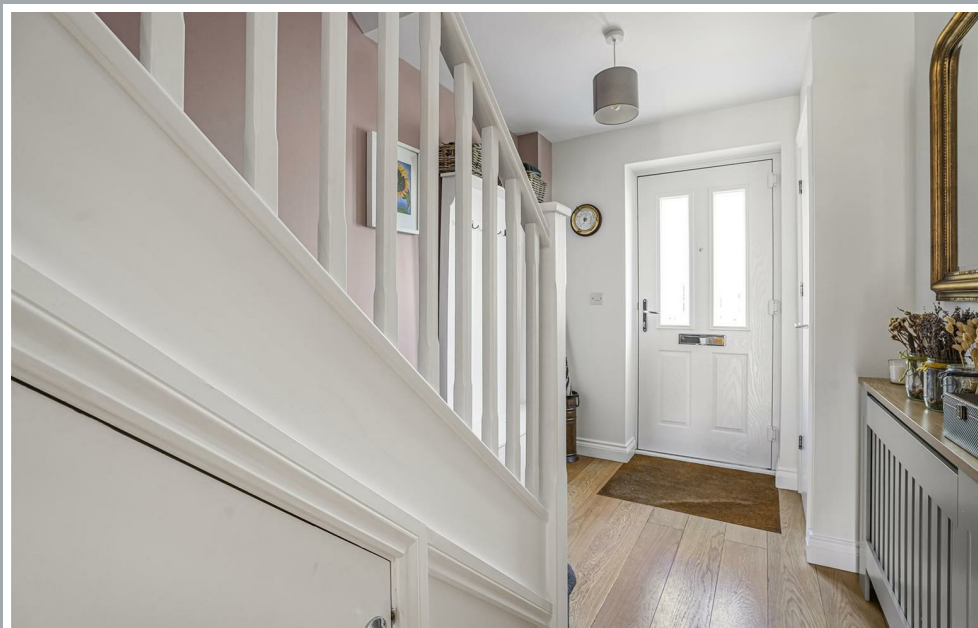
2 Buckwells Field, Bengeo, Herts, SG14 3FF

Steven Oates are pleased to present this immaculately maintained four-bedroom mid-terrace family home, ideally situated within a highly sought-after residential development, just a short distance from Bengeo Primary School. This spacious and thoughtfully extended property offers well-proportioned accommodation arranged over three floors. The ground floor comprises a welcoming entrance hall with a cloakroom, a modern fitted kitchen that opens into a bright and airy lounge/dining area, which in turn leads to a beautifully landscaped south-west facing rear garden—perfect for outdoor entertaining. On the first floor, a generous hallway provides access to three well-sized bedrooms, contemporary family bathroom and an en-suite shower room to bedroom 3. Occupying the entire second floor is the impressive master suite, featuring a private dressing room and a stylish en-suite shower room. Externally, the property benefits from two allocated parking spaces. This is a superb opportunity to acquire a beautifully presented family home in a desirable location. Early viewing is highly recommended.

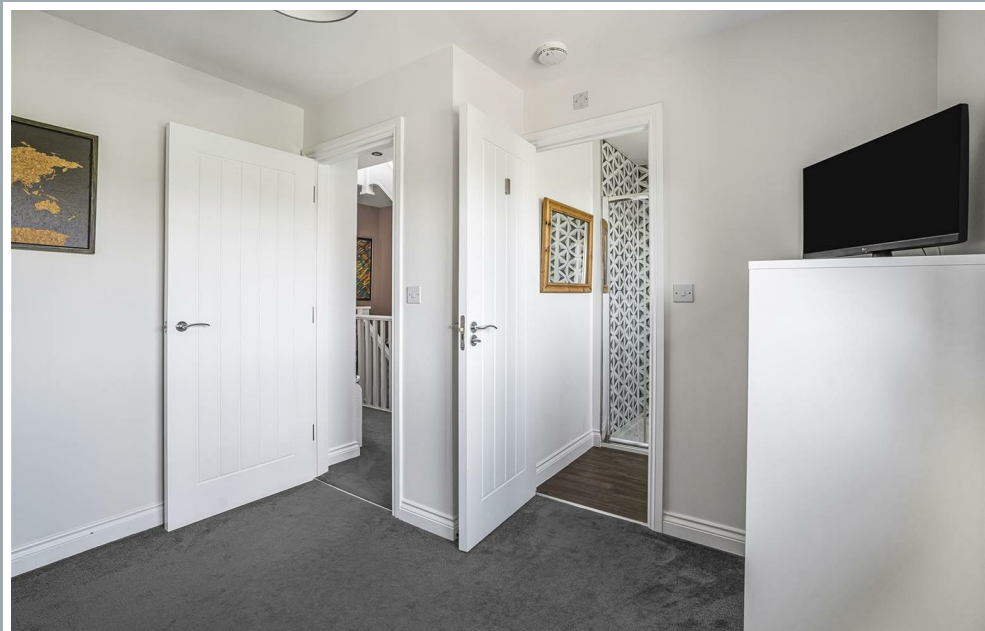
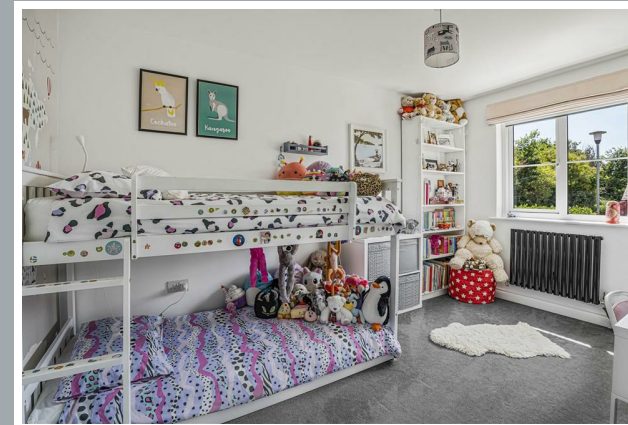
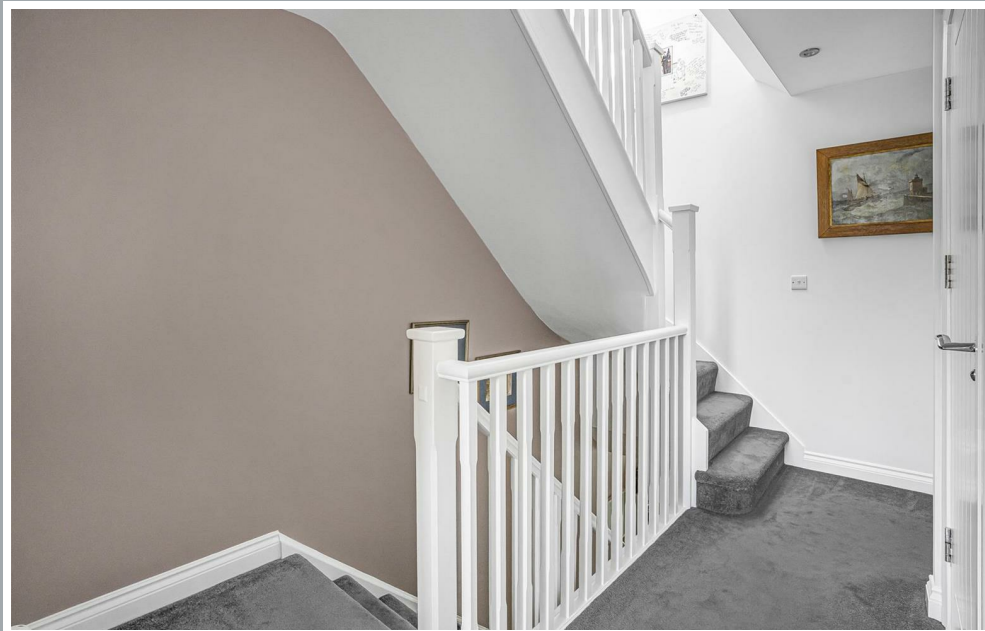
Located within this highly sought after development, this excellent family home is only a short walk from the highly acclaimed Bengeo Primary School and the nearby shopping parade in The Avenue. Hertford town centre is still only 1 mile away offering a wide choice of shops, restaurants and coffee shops and for the commuter, Hertford North mainline train station is 1.2 miles away providing fast services to both Moorgate & Kings Cross.



70 Fore Street, Hertford, Hertfordshire, SG14 1BY

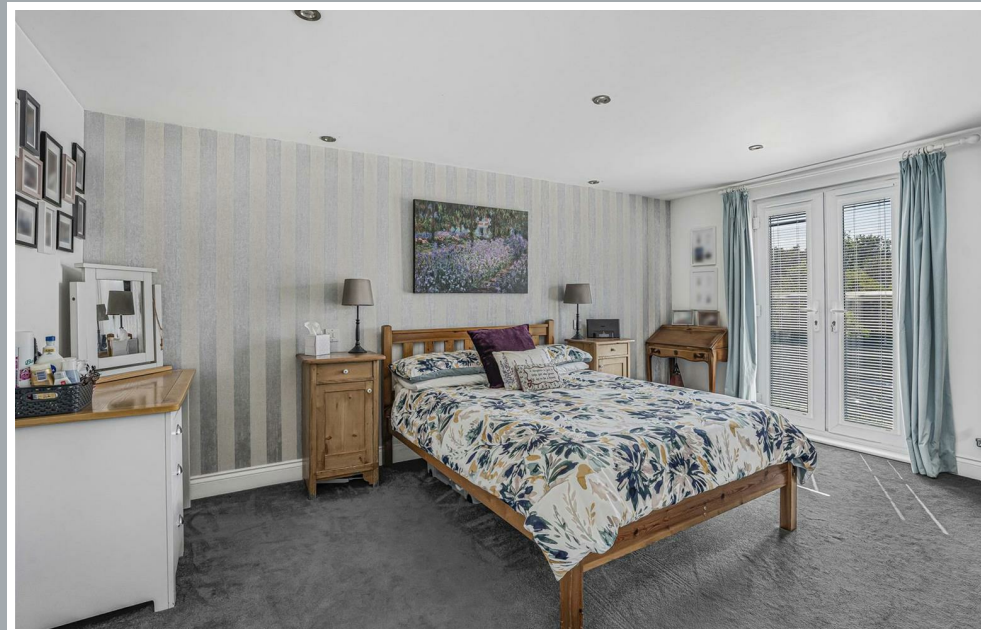


70 Fore Street, Hertford, Hertfordshire, SG14 1BY

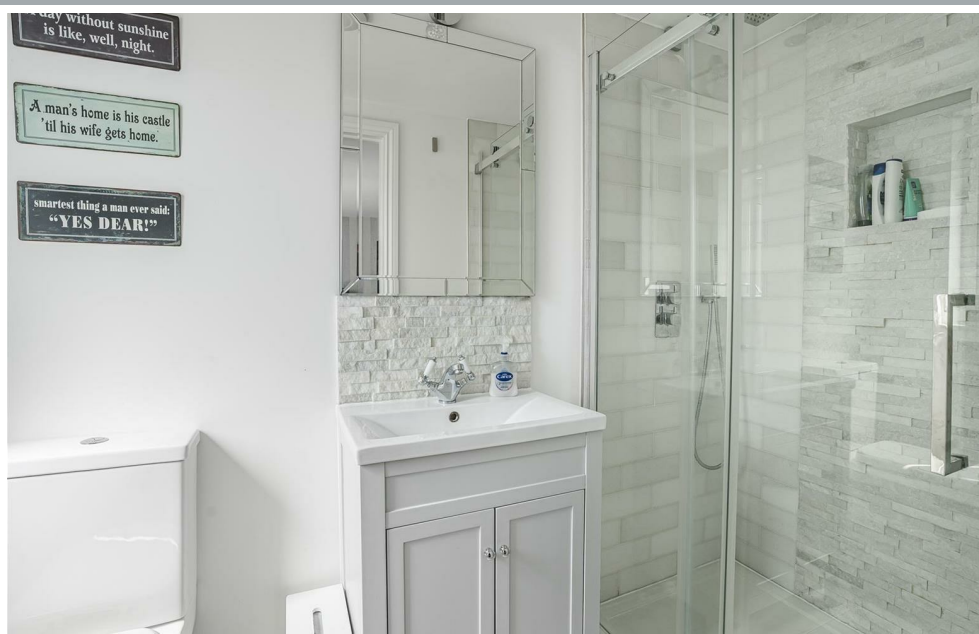
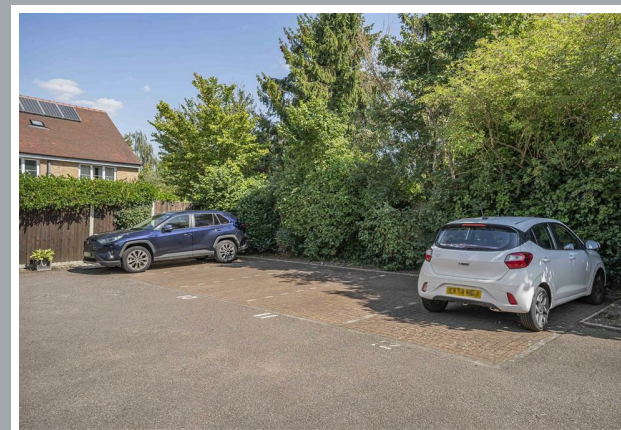


70 Fore Street, Hertford, Hertfordshire, SG14 1BY





70 Fore Street, Hertford, Hertfordshire, SG14 1BY



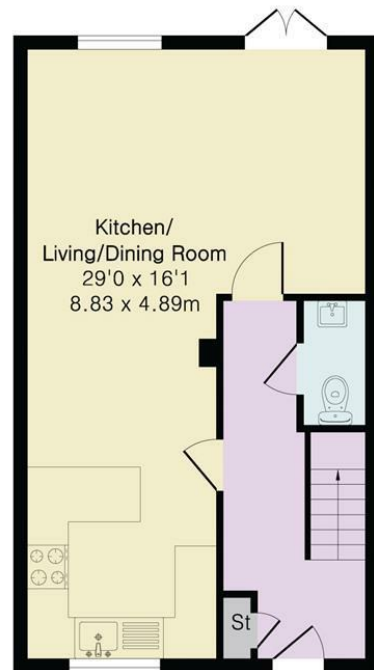
70 Fore Street, Hertford, Hertfordshire, SG14 1BY

Approximate Gross Internal Area 1285 sq ft - 120 sq m

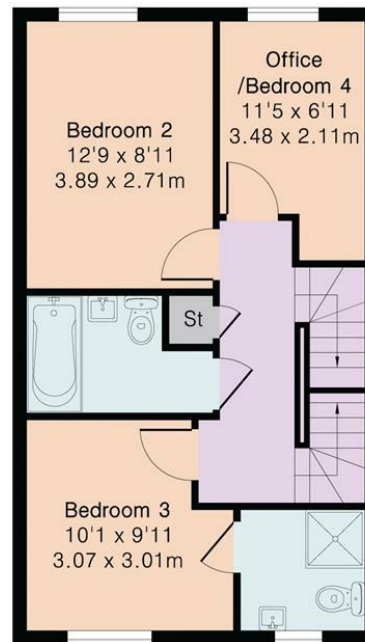
Ground Floor Area 470 sq ft – 44 sq m

First Floor Area 470 sq ft – 44 sq m

Second Floor Area 345 sq ft – 32 sq m



Ground Floor



First Floor



Second Floor

These particulars, whilst believed to be accurate are set out as a general outline only for guidance and do not constitute any part of an offer or contract. Intending purchasers should not rely on them as statements of representation of fact, but must satisfy themselves by inspection or otherwise as to their accuracy. No person in this firm's employment has the authority to make or give any representation or warranty in respect of the property.



stevenoates.com