



stevengoates.com



110 Elder Court

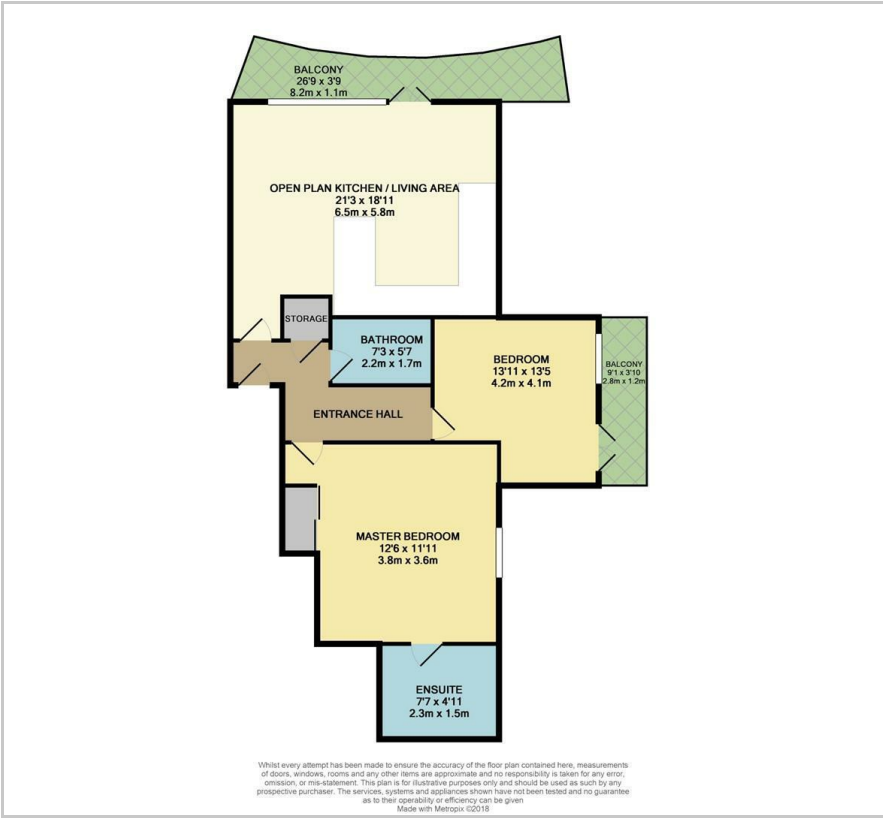
Mead Lane, Hertford, SG13 7FZ

Offers Over £335,000





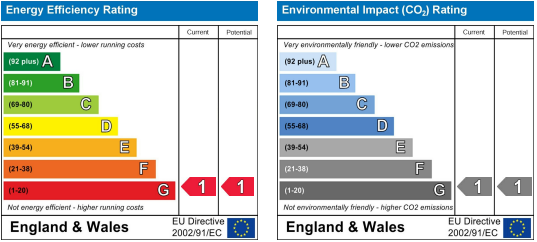
Floor Plan



Area Map



Energy Efficiency Graph



Viewing

Please contact our Hertford Office on 01992303300 if you wish to arrange a viewing appointment for this property or require further information.

- 2 Double Bedroom Penthouse
- Large 26ft Sit Out Balcony
- Large Open Plan Living Area
- Lifts To All Floors
- Storage Room in Basement
- 2 Bathrooms
- 2nd Balcony From Bedroom Two
- Fully Integrated Kitchen
- Communal Gardens

An Immaculate 2 bedroom/2 bathroom penthouse apartment benefiting from a generous size open plan living area with 26ft sit out balcony, second 9ft balcony looking over the communal grounds. The bedrooms are both good size double bedrooms, en-suite to main bedroom and fitted wardrobes, family bathroom, lifts to all floors, secure underground parking, communal gardens.



These particulars, whilst believed to be accurate are set out as a general outline only for guidance and do not constitute any part of an offer or contract. Intending purchasers should not rely on them as statements of representation of fact, but must satisfy themselves by inspection or otherwise as to their accuracy. No person in this firm's employment has the authority to make or give any representation or warranty in respect of the property.