

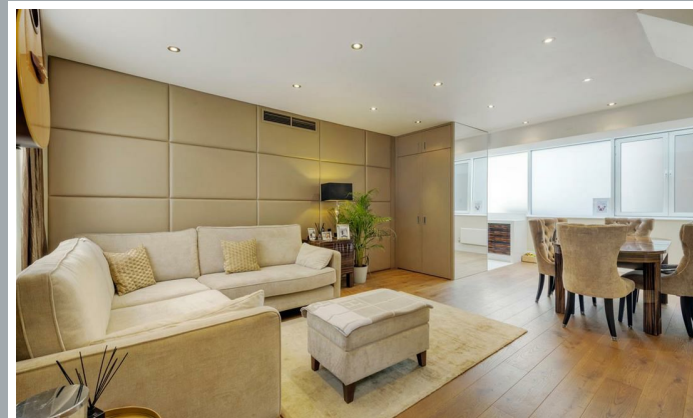
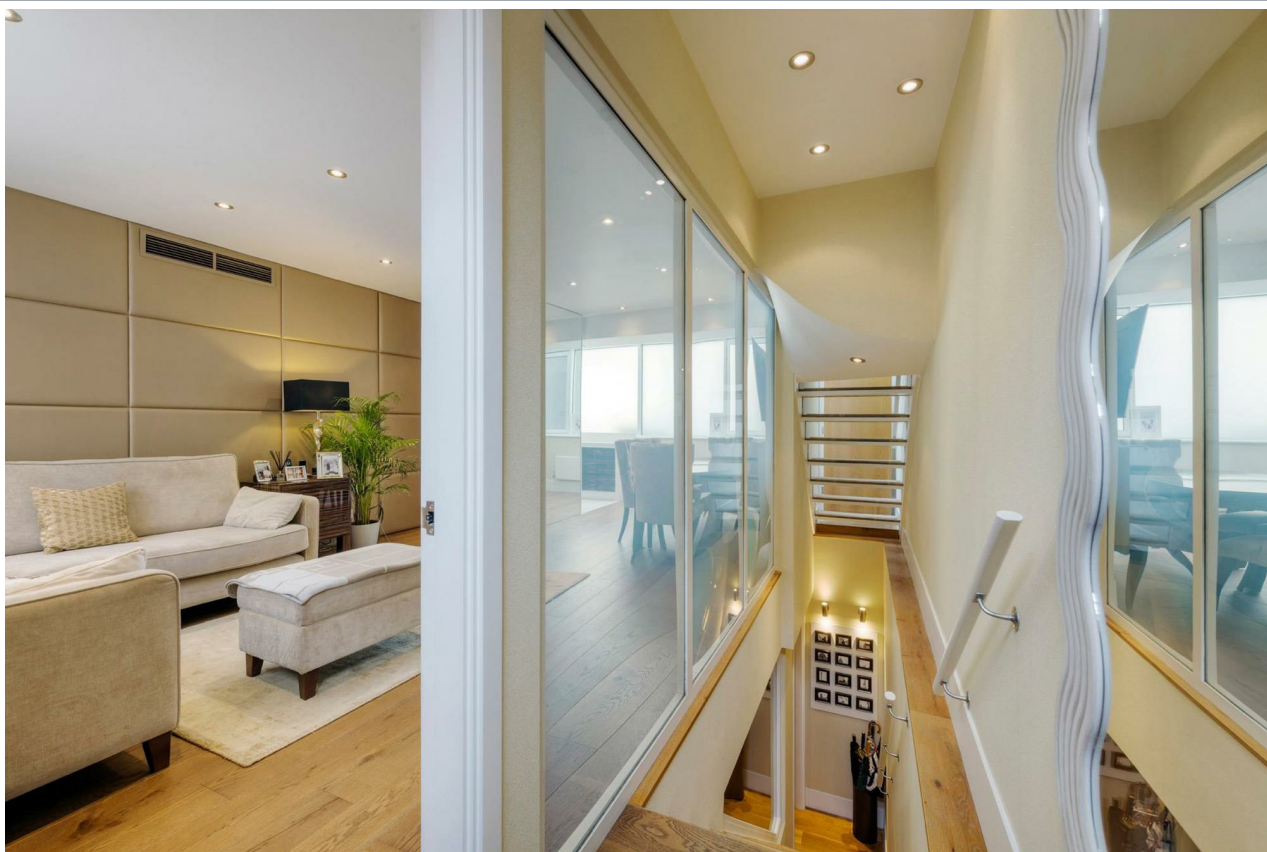


95, Devonshire Mews South, London
W1G 6QP

Guide Price £4,500,000



stevenoates.com



95 Devonshire Mews South, London, W1G 6QP

Tucked away at the quiet end of a charming cobbled mews in Marylebone, this four-bedroom freehold house offers over 2,100 sq ft of thoughtfully arranged accommodation, private parking, and quality finishes throughout.

Entered at raised ground level, the hallway leads down to a versatile lower ground floor currently set up as a cinema room, with a guest WC and separate utility room.

The ground floor provides a well-proportioned living room and a smart kitchen/diner with direct internal access to the garage.

On the first floor is the principal bedroom with en-suite bathroom featuring a built-in steam room, a fourth bedroom, and a separate wet room. The top floor contains two further double bedrooms, each with its own en-suite, offering comfort and privacy for family or guests.

With windows front and back on every level, the house is naturally bright and well-ventilated. Its handsome exterior, freehold status and flexible layout make it an excellent long-term option in one of Central London's most sought-after locations.

Devonshire Mews South is a peaceful cobbled street tucked behind Marylebone High Street, offering easy access to the restaurants, shops and amenities of Marylebone, Fitzrovia and the West End. Regent's Park is a short walk away.

Nearby transport links include Regent's Park (0.3 miles), Great Portland Street (0.4 miles), Oxford Circus (0.6 miles), Marylebone (0.8 miles), and Euston (0.9 miles). The A40 provides direct access west towards the M25 and Heathrow.

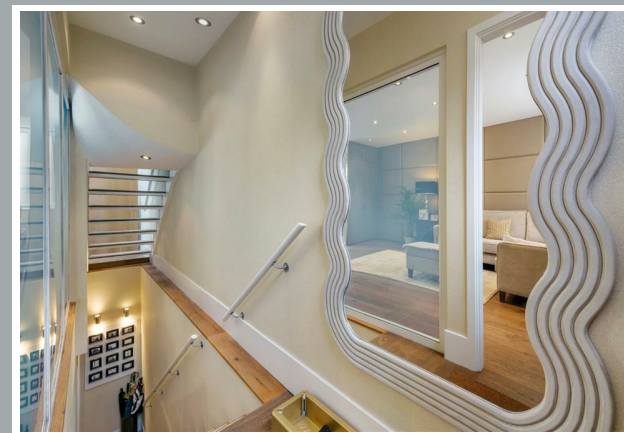
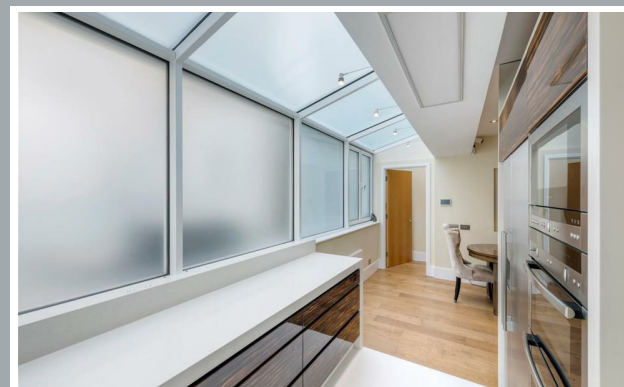


70 Fore Street, Hertford, Hertfordshire, SG14 1BY



70 Fore Street, Hertford, Hertfordshire, SG14 1BY





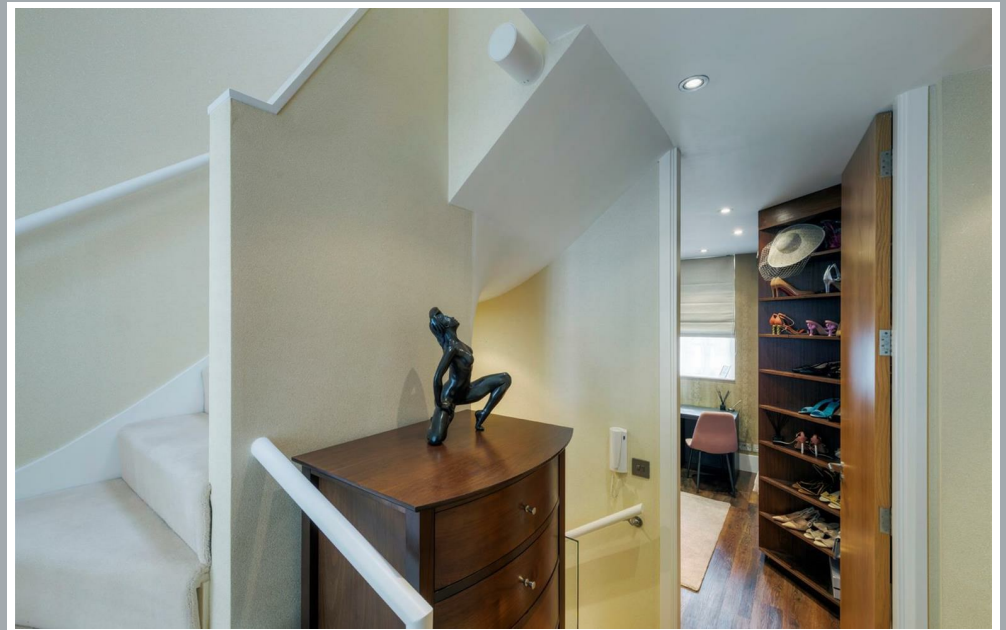
70 Fore Street, Hertford, Hertfordshire, SG14 1BY



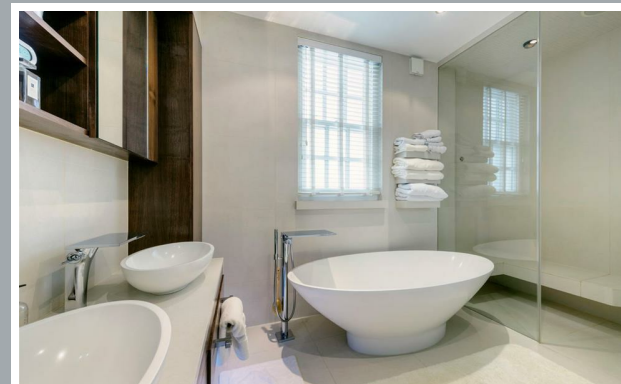
70 Fore Street, Hertford, Hertfordshire, SG14 1BY



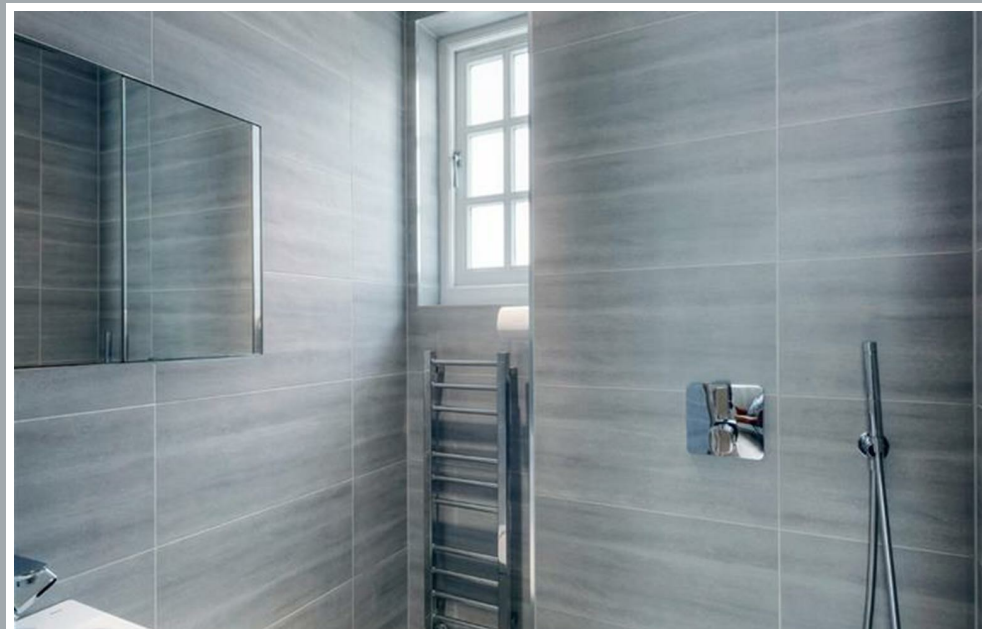
70 Fore Street, Hertford, Hertfordshire, SG14 1BY



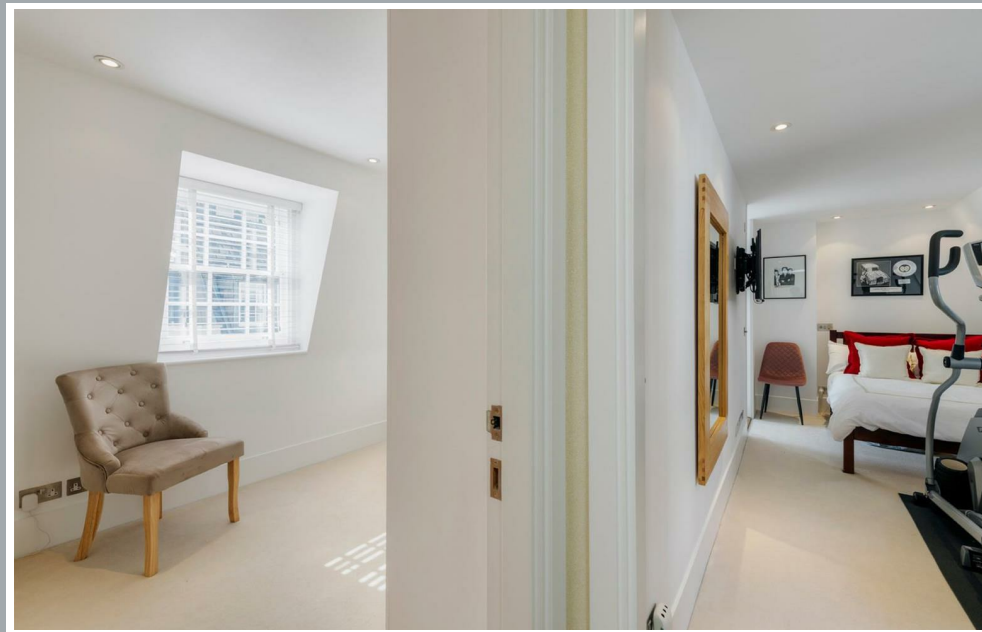
70 Fore Street, Hertford, Hertfordshire, SG14 1BY



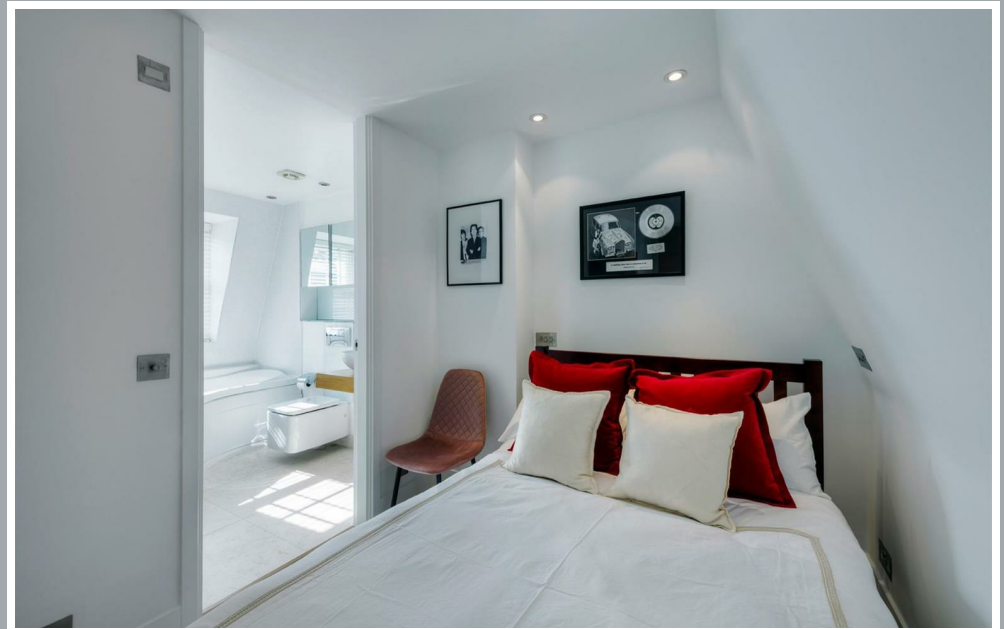
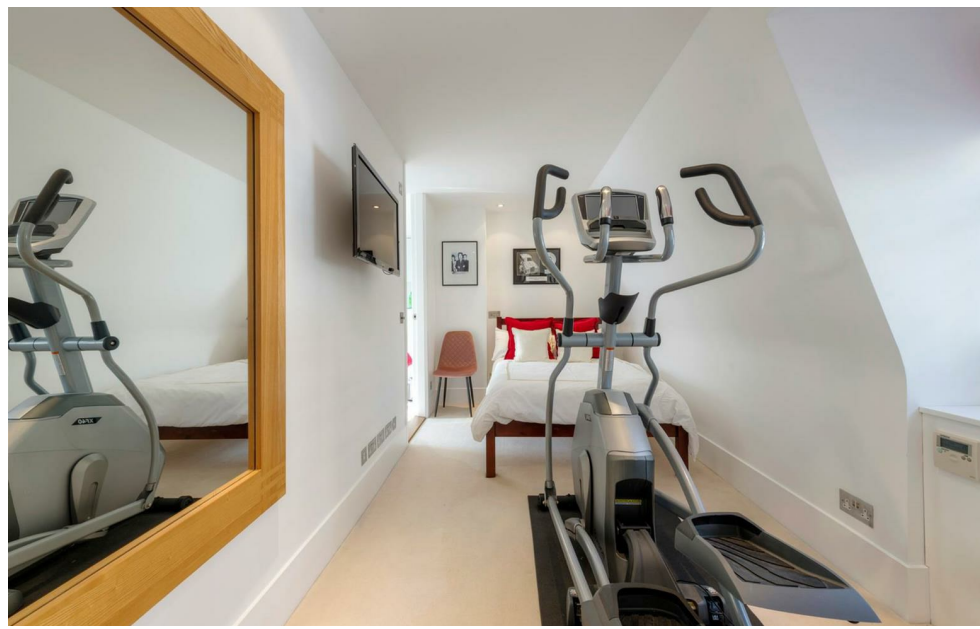
70 Fore Street, Hertford, Hertfordshire, SG14 1BY



70 Fore Street, Hertford, Hertfordshire, SG14 1BY



70 Fore Street, Hertford, Hertfordshire, SG14 1BY



70 Fore Street, Hertford, Hertfordshire, SG14 1BY

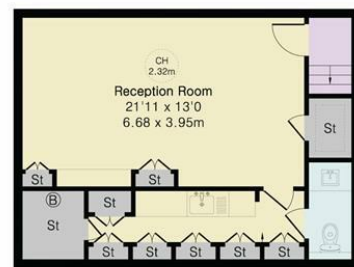
Approximate Gross Internal Area 2123 sq ft - 197 sq m

Lower Ground Floor Area 467 sq ft - 43 sq m

Ground Floor Area 689 sq ft - 64 sq m

First Floor Area 519 sq ft - 48 sq m

Second Floor Area 448 sq ft - 42 sq m

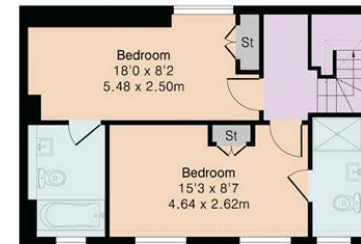


Lower Ground Floor

16'6" x 5'3"
5.04 x 1.60m



Ground Floor



Second Floor



First Floor



Although Pink Plan Ltd ensures the highest level of accuracy, measurements of doors, windows and rooms are approximate and no responsibility is taken for error, omission or misstatement. These plans are for representation purposes only as defined by RICS code of measuring practise. No guarantee is given on total square footage of the property within this plan. The figure icon is for initial guidance only and should not be relied on as a basis of valuation.



These particulars, whilst believed to be accurate are set out as a general outline only for guidance and do not constitute any part of an offer or contract. Intending purchasers should not rely on them as statements of representation of fact, but must satisfy themselves by inspection or otherwise as to their accuracy. No person in this firms employment has the authority to make or give any representation or warranty in respect of the property.



stevenoates.com