



39, Clements Close, Puckeridge

SG11 1DE

Price Guide £250,000



stevenoates.com



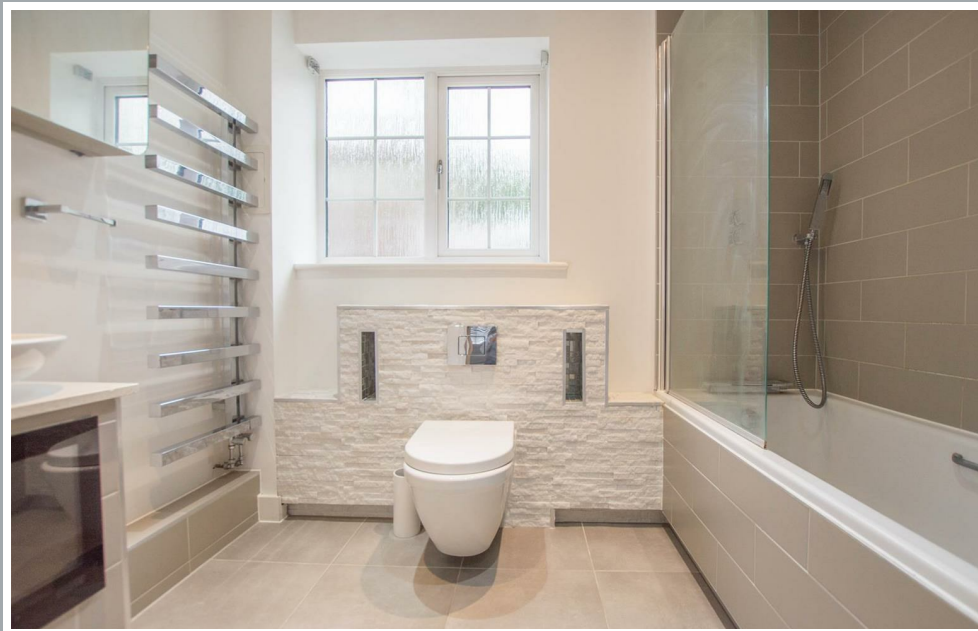
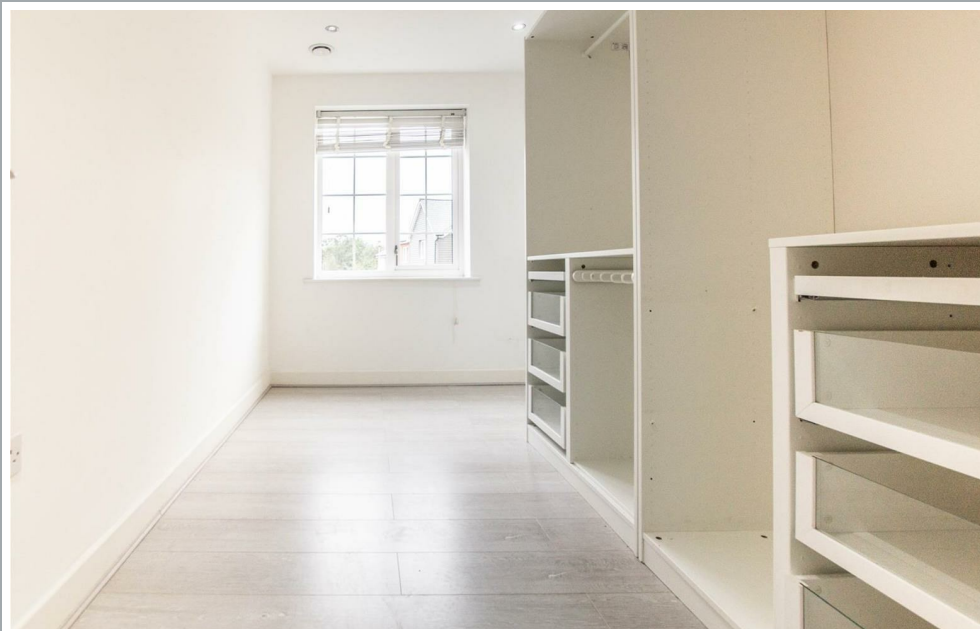
39 Clements Close, Puckeridge, Herts, SG11 1DE

****CHAIN FREE**** Steven Oates are delighted to offer this two bedroom ground floor apartment situated in the modern development in the ever popular and sought after village of Puckeridge just north of Ware! The property is conveniently positioned close to good local schools and boasts two double bedrooms, modern bathroom and kitchen, secure entry system, allocated car parking space and gas central heating. Viewings by appointment only.

The property is located within the heart of this thriving village which offers an excellent range of localised amenities including a choice of village pubs, a shop, a coffee shop and the village primary school. The nearby towns of Ware and Hertford both offer a wider choice of shops, along with mainline train stations servicing London and excellent secondary schooling.

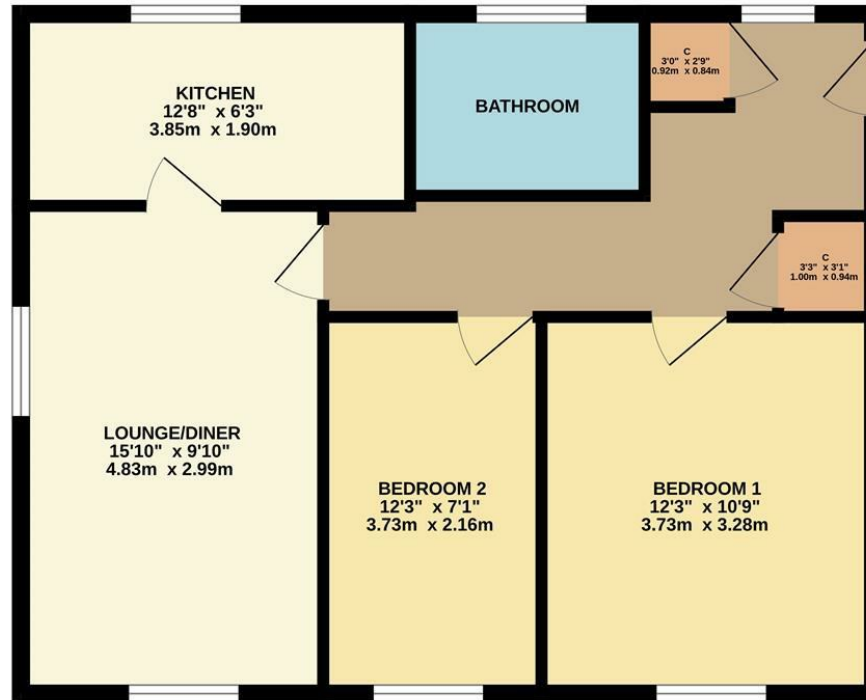


70 Fore Street, Hertford, Hertfordshire, SG14 1BY



70 Fore Street, Hertford, Hertfordshire, SG14 1BY

GROUND FLOOR
611 sq.ft. (56.7 sq.m.) approx.



TOTAL FLOOR AREA : 611 sq.ft. (56.7 sq.m.) approx.

Whilst every attempt has been made to ensure the accuracy of the floorplan contained here, measurements of doors, windows, rooms and any other items are approximate and no responsibility is taken for any error, omission or mis-statement. This plan is for illustrative purposes only and should be used as such by any prospective purchaser. The services, systems and appliances shown have not been tested and no guarantee as to their operability or efficiency can be given.
Made with Metropix ©2025

These particulars, whilst believed to be accurate are set out as a general outline only for guidance and do not constitute any part of an offer or contract. Intending purchasers should not rely on them as statements of representation of fact, but must satisfy themselves by inspection or otherwise as to their accuracy. No person in this firm's employment has the authority to make or give any representation or warranty in respect of the property.



stevenoates.com