



32, The Wick, Bengoe
SG14 3HW
Guide Price £550,000



stevenoates.com



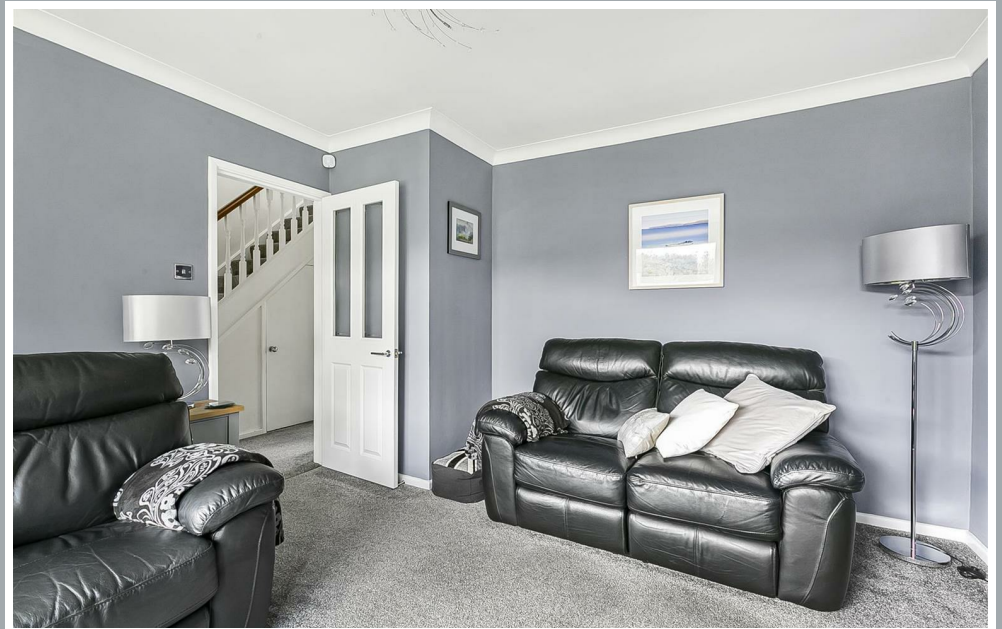
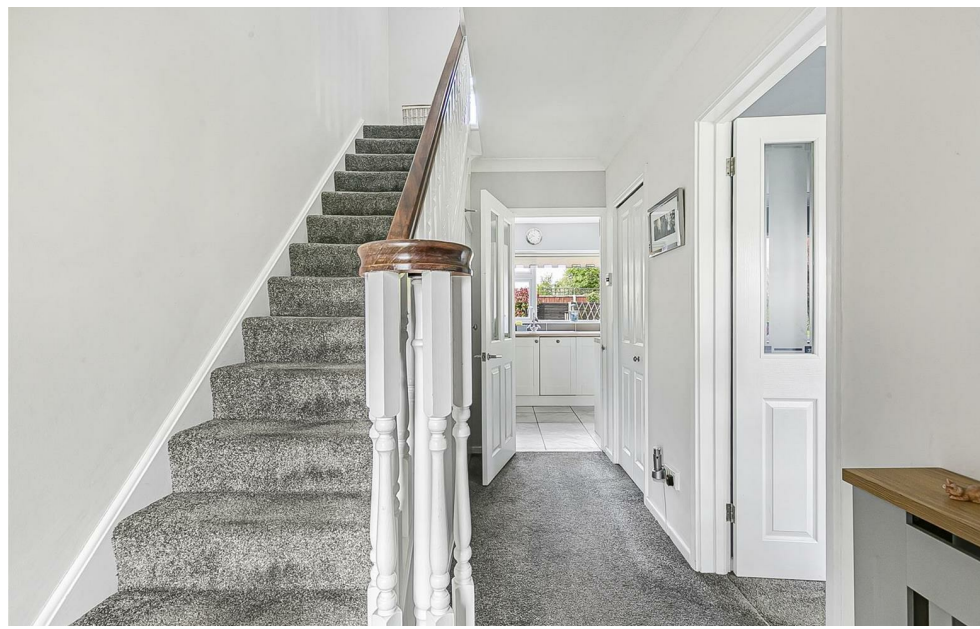
32 The Wick, Bengeo, Herts, SG14 3HW

An exceptionally well appointed 3 bedroom modern family home located within one of Bengeo's most popular residential locations. The recently refurbished accommodation comprises of an entrance hall, downstairs wc, living room and a refitted kitchen/diner. On the first floor, there are 3 good size bedrooms and a refitted family bathroom. Externally, there are attractive front and rear gardens, with the rear garden enjoying a sunny southerly aspect. The property also offers a single garage located at the front and is offered chain free.

Located within this leafy residential road in the heart of Bengeo, the property offers excellent access to the ever popular Bengeo JMI school and is just over a mile from Hertford North train station which provides a fast service to London's Moorgate (44 minutes) and the London Underground station of Finsbury Park (30 minutes).



70 Fore Street, Hertford, Hertfordshire, SG14 1BY



70 Fore Street, Hertford, Hertfordshire, SG14 1BY

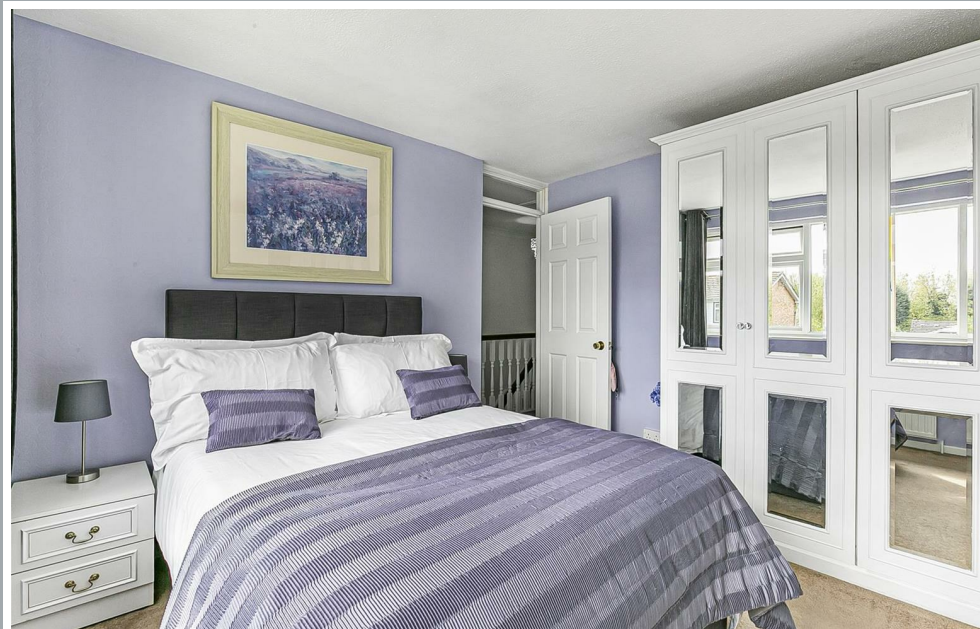


70 Fore Street, Hertford, Hertfordshire, SG14 1BY

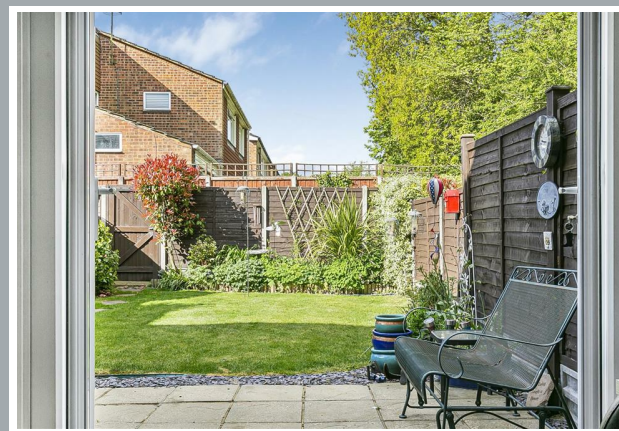
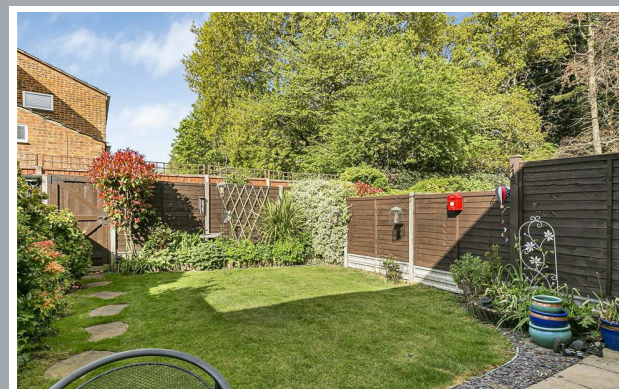




70 Fore Street, Hertford, Hertfordshire, SG14 1BY



70 Fore Street, Hertford, Hertfordshire, SG14 1BY

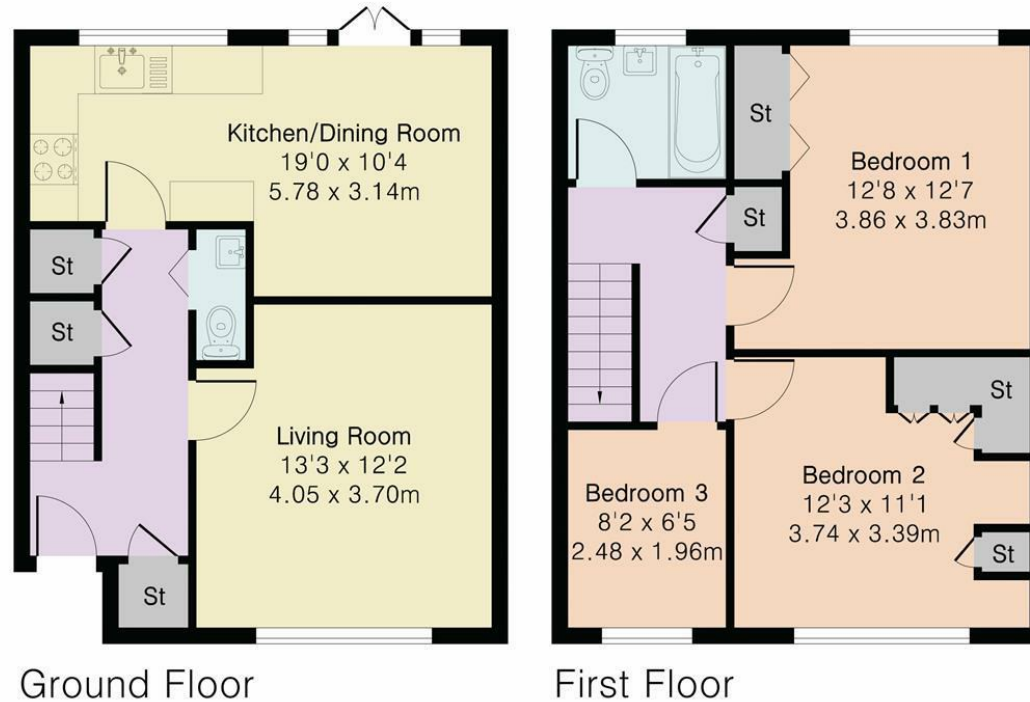


70 Fore Street, Hertford, Hertfordshire, SG14 1BY

Approximate Gross Internal Area 897 sq ft - 83 sq m

Ground Floor Area 443 sq ft – 41 sq m

First Floor Area 454 sq ft – 42 sq m



Although Pink Plan Ltd ensures the highest level of accuracy, measurements of doors, windows and rooms are approximate and no responsibility is taken for error, omission or misstatement. These plans are for representation purposes only as defined by RICS code of measuring practise. No guarantee is given on total square footage of the property within this plan. The figure icon is for initial guidance only and should not be relied on as a basis of valuation.



These particulars, whilst believed to be accurate are set out as a general outline only for guidance and do not constitute any part of an offer or contract. Intending purchasers should not rely on them as statements of representation of fact, but must satisfy themselves by inspection or otherwise as to their accuracy. No person in this firm's employment has the authority to make or give any representation or warranty in respect of the property.



stevenoates.com