



3, Moorfields, Hertford
SG14 1FJ
Guide Price £850,000



stevenoates.com



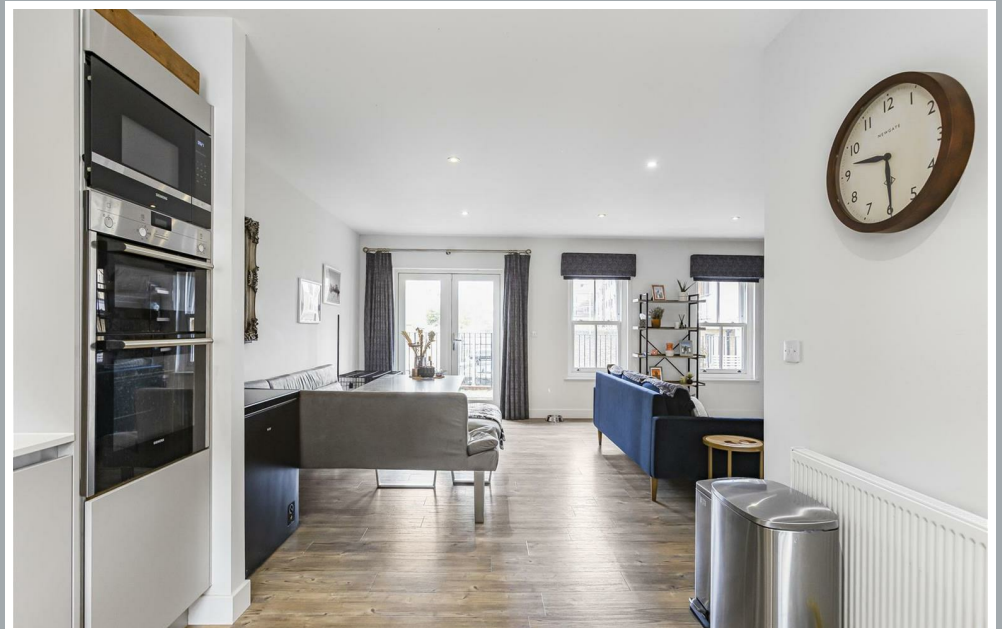
3 Moorfields, Hertford, Herts, SG14 1FJ

A spacious 5 bedroom, 3 bathroom end of terrace townhouse located within this sought after, gated development in the heart of Hertford's town centre. The property offers stylish accommodation over 4 floors including a bedroom/entertainment room and shower room on the lower ground floor, a large open plan living space on the upper ground floor with access out to the private garden. On the first floor there are 3 good size bedrooms, a family bathroom with the main bedroom including an en-suite shower room on the second floor. Externally, there is allocated parking for upto 2 cars and a private rear garden arranged on 2 levels.

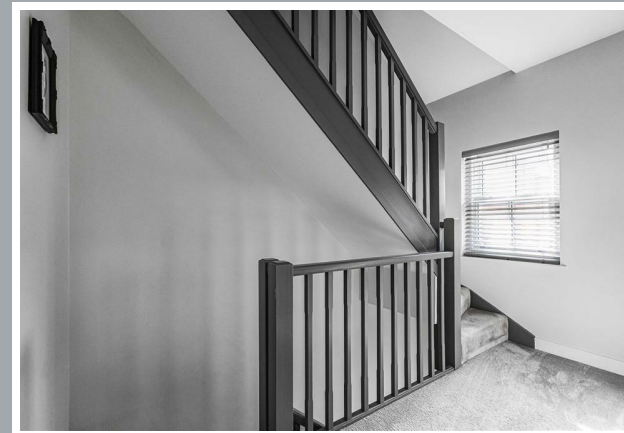
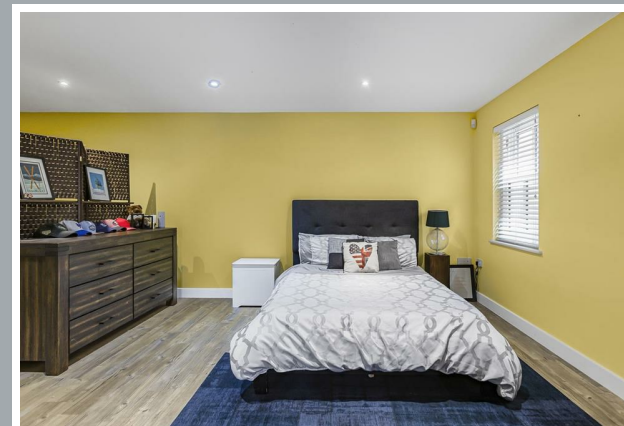
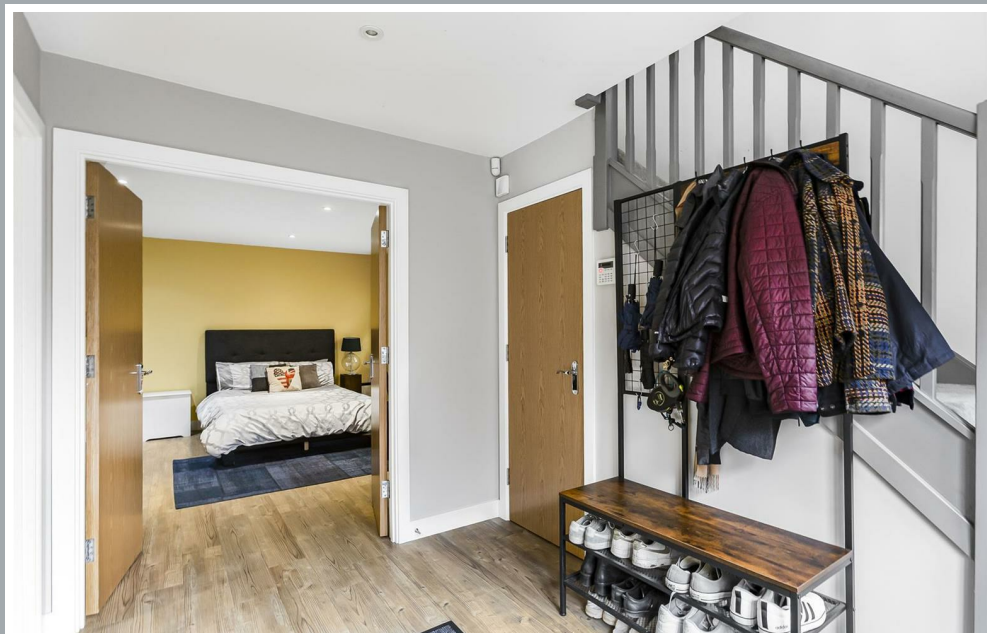
Located within a gated development, the property has all of the town centres amenities on it's door step. The historic town centre offers an excellent choice of independent shops and restaurants, along with 2 mainline train stations and excellent green spaces nearby.



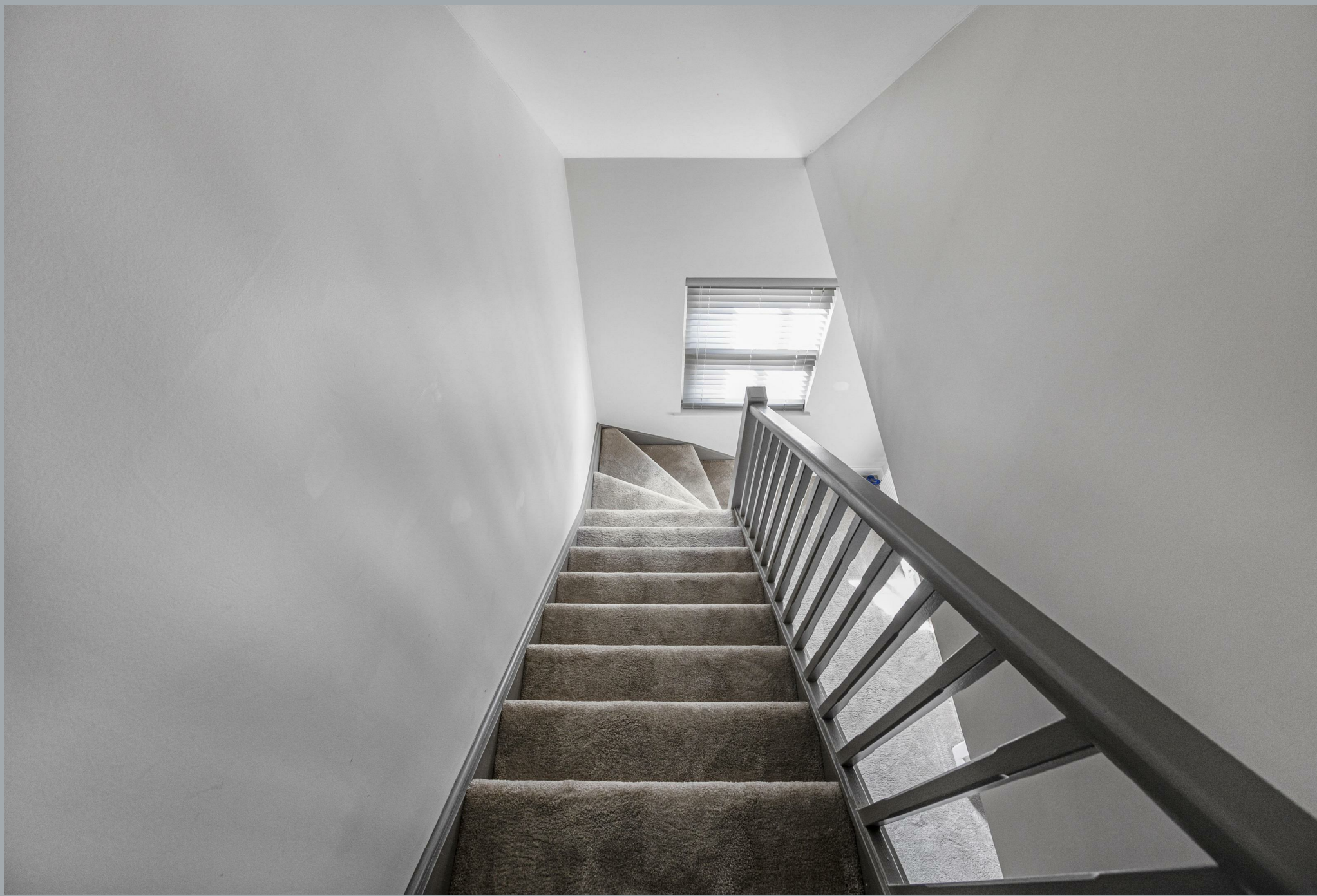
70 Fore Street, Hertford, Hertfordshire, SG14 1BY



70 Fore Street, Hertford, Hertfordshire, SG14 1BY

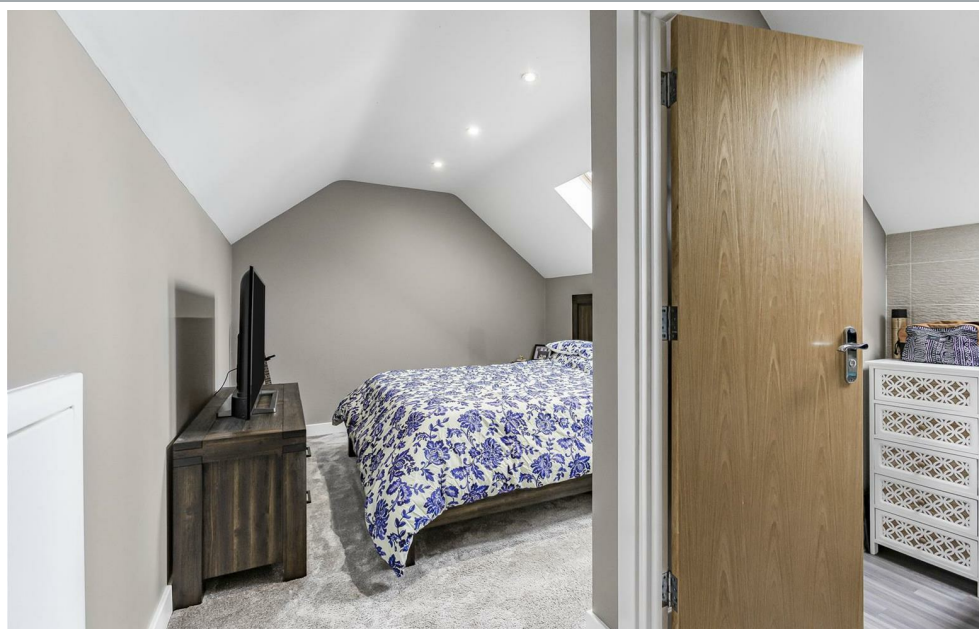


70 Fore Street, Hertford, Hertfordshire, SG14 1BY

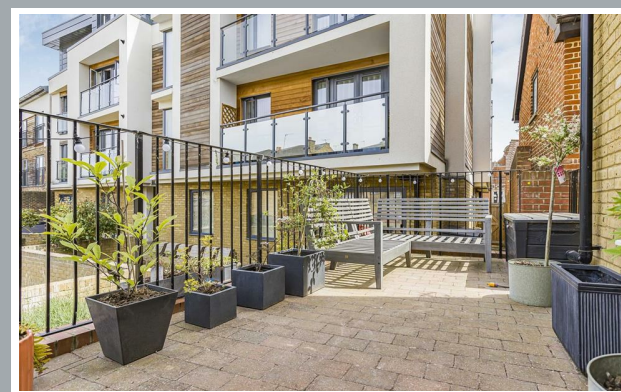




70 Fore Street, Hertford, Hertfordshire, SG14 1BY



70 Fore Street, Hertford, Hertfordshire, SG14 1BY



70 Fore Street, Hertford, Hertfordshire, SG14 1BY

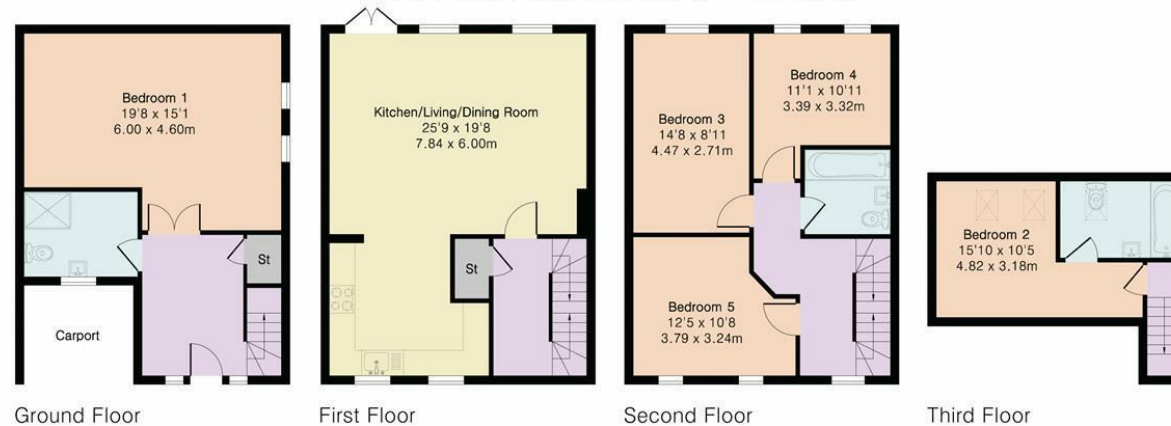
Approximate Gross Internal Area 1686 sq ft - 157 sq m

Ground Floor Area 447 sq ft – 42 sq m

First Floor Area 516 sq ft – 48 sq m

Second Floor Area 516 sq ft – 48 sq m

Third Floor Area 207 sq ft – 19 sq m



Although Pink Plan Ltd ensures the highest level of accuracy, measurements of doors, windows and rooms are approximate and no responsibility is taken for error, omission or misstatement. These plans are for representation purposes only as defined by RICS code of measuring practise. No guarantee is given on total square footage of the property within this plan. The figure icon is for initial guidance only and should not be relied on as a basis of valuation.



These particulars, whilst believed to be accurate are set out as a general outline only for guidance and do not constitute any part of an offer or contract. Intending purchasers should not rely on them as statements of representation of fact, but must satisfy themselves by inspection or otherwise as to their accuracy. No person in this firm's employment has the authority to make or give any representation or warranty in respect of the property.



stevenoates.com