



Wormleybury Manor, Broxbourne

EN10 7QE

Price Guide £1,375,000



[stevenoates.com](http://stevenoates.com)





## Lakeview, Wormleybury Manor, Church Lane, Broxbourne, Hertfordshire, EN10 7QE

A truly outstanding 2917 sqft apartment occupying the entire rear 1st & 2nd floors of this Grade I listed mansion with majestic accommodation including 4 bedrooms, 3 bathrooms, 2 exceptional reception rooms and a study. The apartment benefits from sunny southerly views over the parkland grounds and the impressive 5 acre lake.

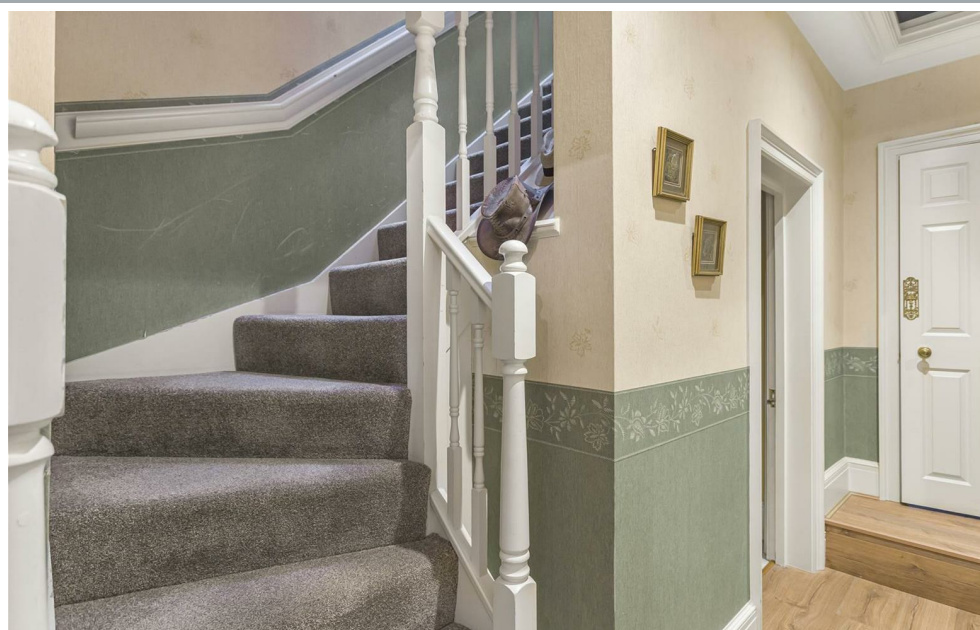
Lakeview provides the commuter with a peaceful country refuge within easy reach of London from a choice of rail stations (25 minutes from Broxbourne to Liverpool Street) and convenient for major road networks including the A10 and M25. Wormleybury is a delightful small village steeped in history and conveniently located close to Broxbourne and a wide range of amenities including the large shopping centre at Brookfield Farm.





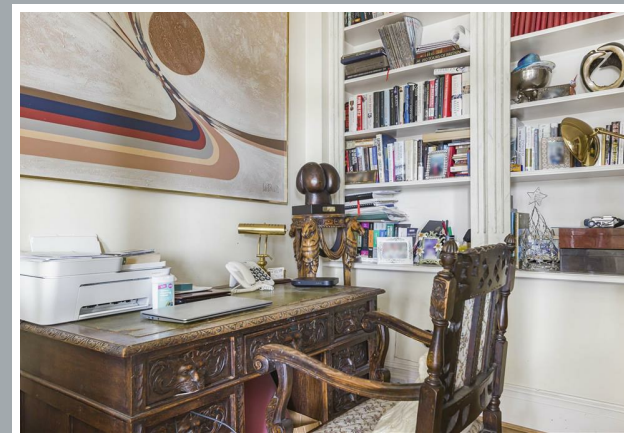
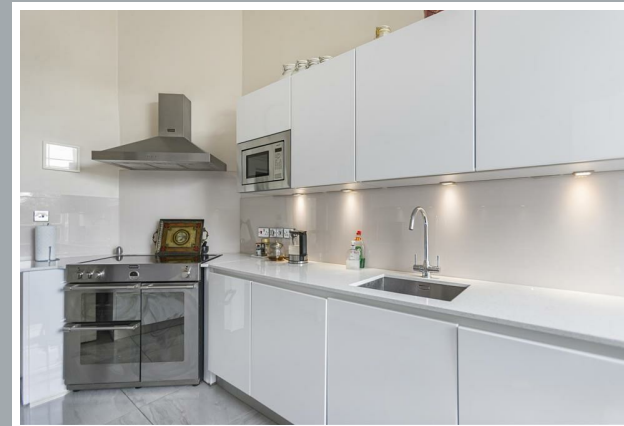
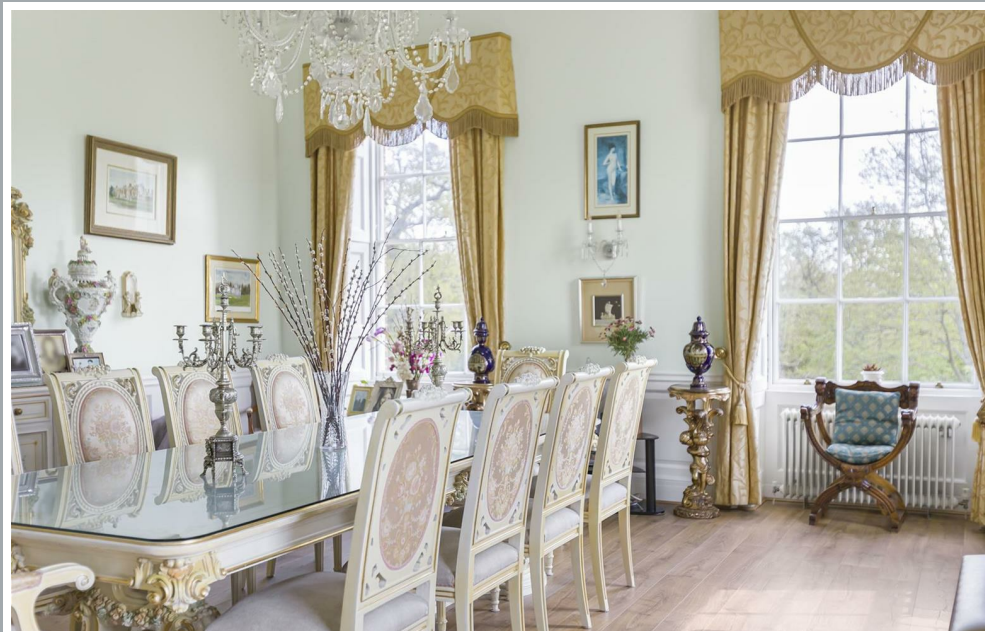
70 Fore Street, Hertford, Hertfordshire, SG14 1BY





70 Fore Street, Hertford, Hertfordshire, SG14 1BY





70 Fore Street, Hertford, Hertfordshire, SG14 1BY





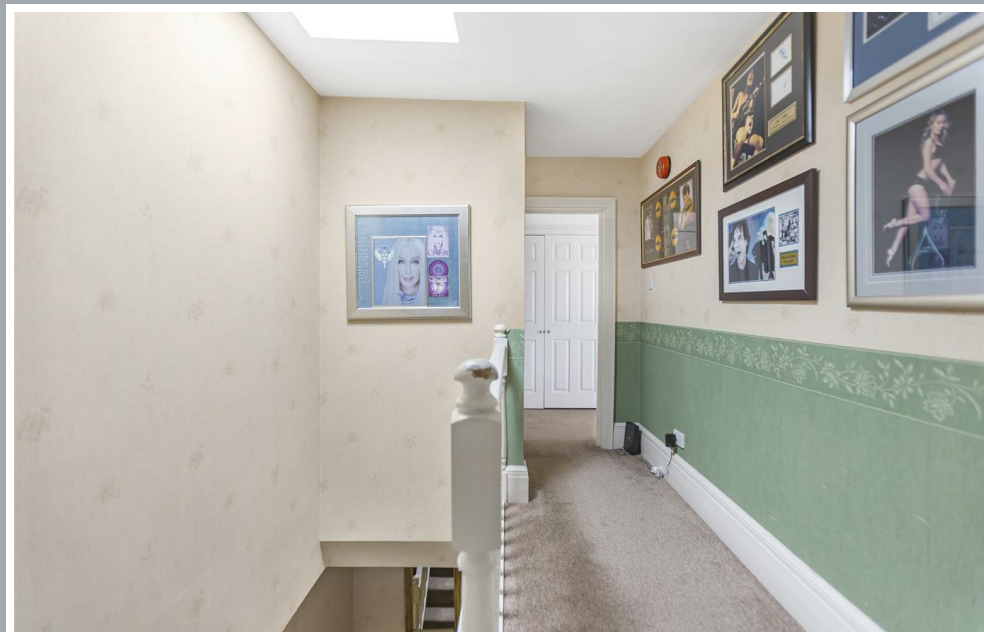
70 Fore Street, Hertford, Hertfordshire, SG14 1BY





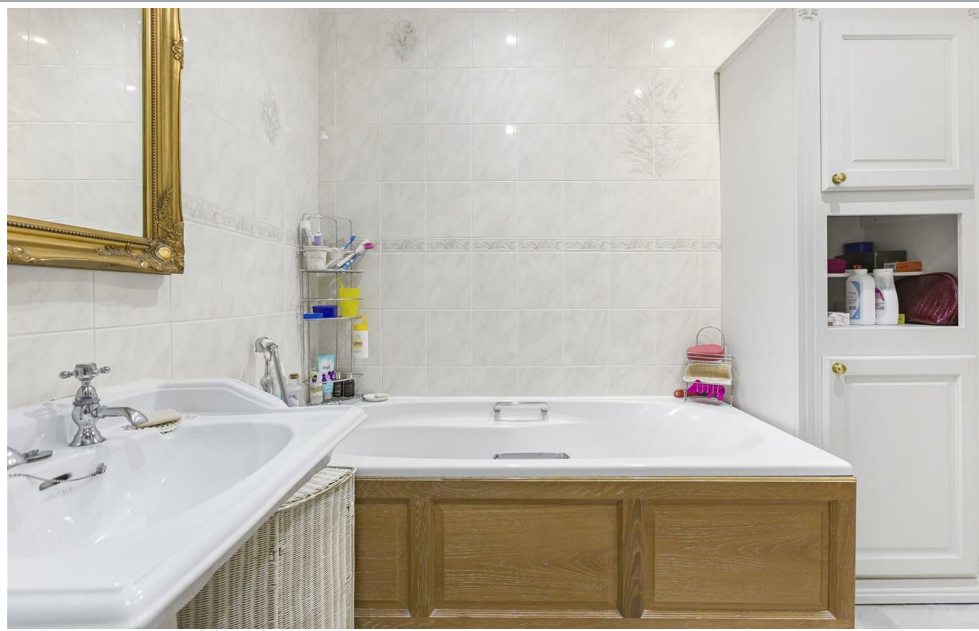
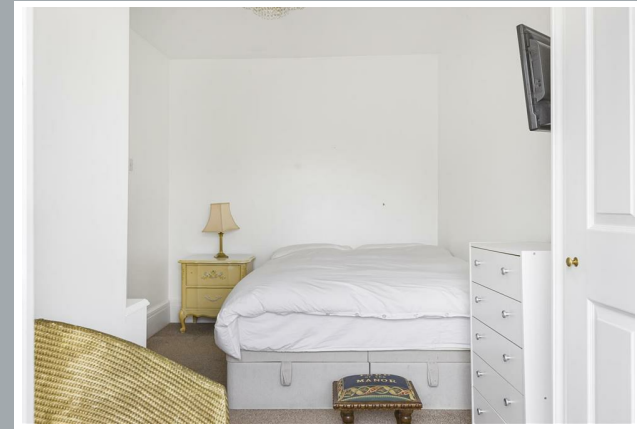
70 Fore Street, Hertford, Hertfordshire, SG14 1BY





70 Fore Street, Hertford, Hertfordshire, SG14 1BY





70 Fore Street, Hertford, Hertfordshire, SG14 1BY





70 Fore Street, Hertford, Hertfordshire, SG14 1BY





70 Fore Street, Hertford, Hertfordshire, SG14 1BY





70 Fore Street, Hertford, Hertfordshire, SG14 1BY





70 Fore Street, Hertford, Hertfordshire, SG14 1BY

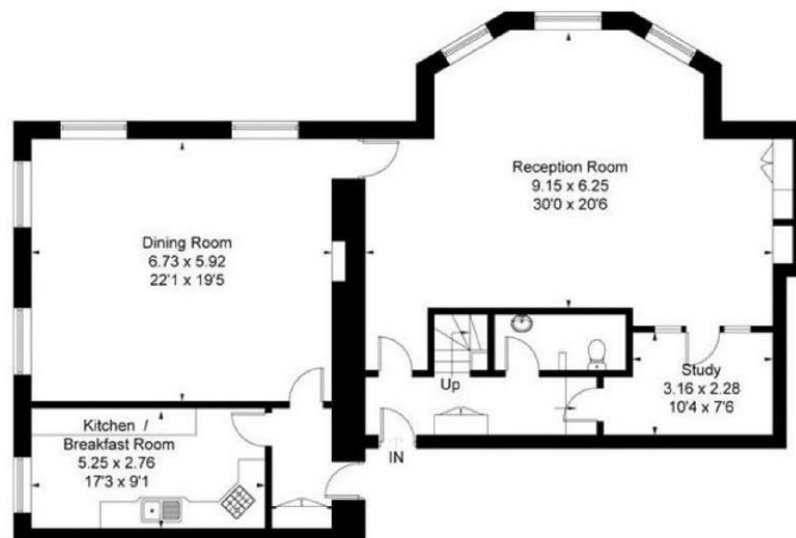




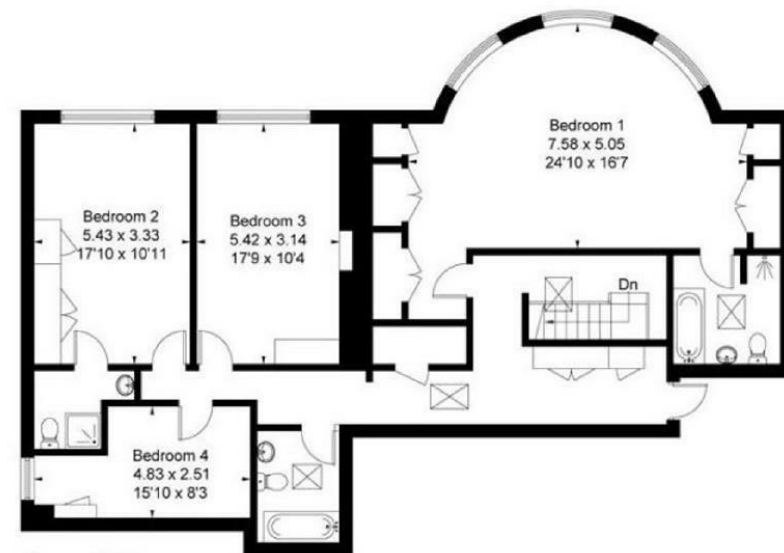
70 Fore Street, Hertford, Hertfordshire, SG14 1BY



Approximate Floor Area = 276.0 sq m / 2971 sq ft



First Floor



Second Floor

These particulars, whilst believed to be accurate are set out as a general outline only for guidance and do not constitute any part of an offer or contract. Intending purchasers should not rely on them as statements of representation of fact, but must satisfy themselves by inspection or otherwise as to their accuracy. No person in this firm's employment has the authority to make or give any representation or warranty in respect of the property.



[stevenoates.com](http://stevenoates.com)