



4, Station Road, Letty Green, Nr Hertford  
SG14 2NS  
Guide Price £475,000



[stevenoates.com](http://stevenoates.com)





## 4 Station Road, Letty Green, Nr Hertford, SG14 2NS

\*\*\*\*CHAIN FREE\*\*\*\* Steven Oates are delighted to offer this three bedroom mid terrace house within this highly sought after residential road in the heart of the idyllic village of Letty Green. The property is arranged over three floors and comprises of; entrance hallway leading to ground floor shower room, through lounge leading to dining room and kitchen. On the first floor, there are two double bedrooms and en-suite shower room. On the second floor, there is a spacious bedroom and en-suite shower room. Externally, there is off street parking for several cars and private rear garden. Keys held for immediate viewing.

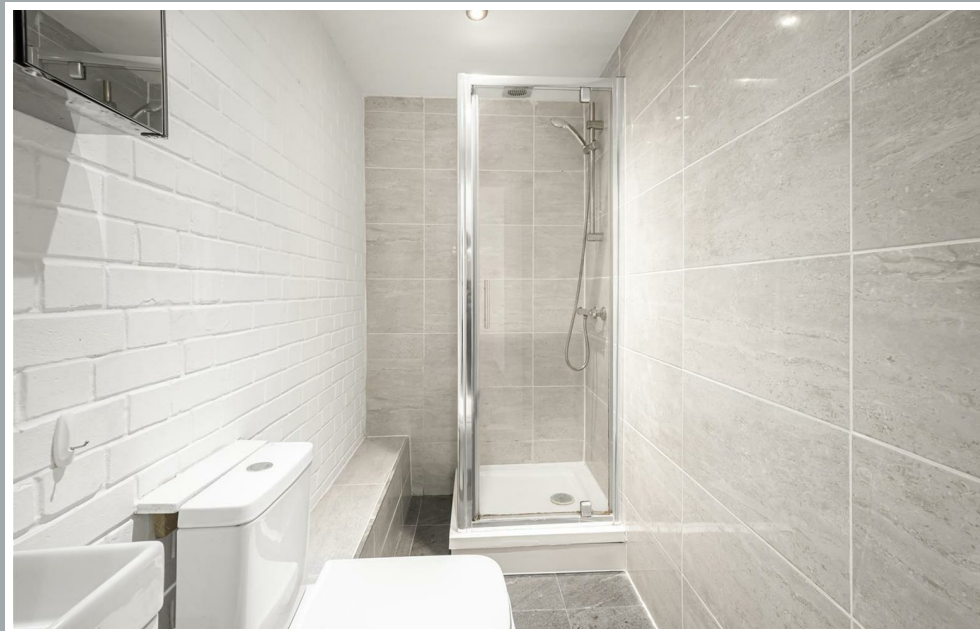
The property is located within one of the area's most sought after village locations. Letty Green is an idyllic village surrounded by beautiful countryside including the popular Cole Green Way nature trail. The village primary school, Hertingfordbury Cowper JMI is a short distance away as is the popular country pub, The Cowper Arms. Both Hertford and Welwyn Garden City are a short drive away providing an excellent shops, restaurants and schooling for all ages, along with a choice of mainline train stations serving London.





70 Fore Street, Hertford, Hertfordshire, SG14 1BY





70 Fore Street, Hertford, Hertfordshire, SG14 1BY





70 Fore Street, Hertford, Hertfordshire, SG14 1BY









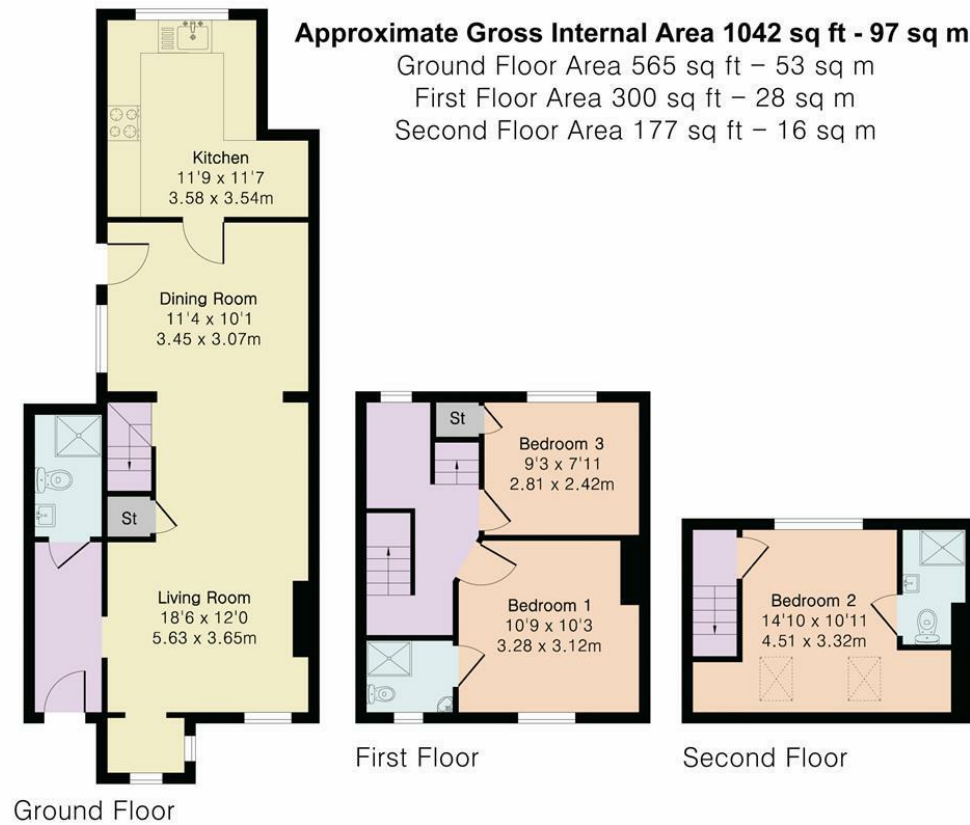
70 Fore Street, Hertford, Hertfordshire, SG14 1BY





70 Fore Street, Hertford, Hertfordshire, SG14 1BY





Although Pink Plan Ltd ensures the highest level of accuracy, measurements of doors, windows and rooms are approximate and no responsibility is taken for error, omission or misstatement. These plans are for representation purposes only as defined by RICS code of measuring practise. No guarantee is given on total square footage of the property within this plan. The figure icon is for initial guidance only and should not be relied on as a basis of valuation.



These particulars, whilst believed to be accurate are set out as a general outline only for guidance and do not constitute any part of an offer or contract. Intending purchasers should not rely on them as statements of representation of fact, but must satisfy themselves by inspection or otherwise as to their accuracy. No person in this firm's employment has the authority to make or give any representation or warranty in respect of the property.



[stevenoates.com](http://stevenoates.com)