



Ashtree Lodge, Moor Green, Ardeley

SG2 7AT

Price Guide £1,195,000



stevenoates.com



Ashtree Lodge Moor Green, Ardeley, Hertfordshire, SG2 7AT

EXCEPTIONAL NEW HOME IN STUNNING LOCATION - A completely renovated and remodelled detached family home located within an exceptional position directly adjoining Moor Green to the front and idyllic views over countryside to the rear. This stylish family home comprises of a galleried entrance hall with walk in closet and a downstairs wc, a living room, play room, study and a snug, along with a large family size kitchen and separate utility room. On the first floor, there are 4 double bedrooms, 2 en-suite shower rooms and a family bathroom. Externally, the property sits in a gated plot of nearly 0.3 of an acre and includes ample parking, along with a detached double car port. The high quality finish includes underfloor heating throughout, high end bathrooms and kitchen which includes all of the latest features. Viewing is imperative to fully appreciate the unique location and quality of the property.

Moor Green is an idyllic rural hamlet comprising of a handful of properties surrounded by beautiful Hertfordshire countryside and centred around a charming protected green. The main village of Ardeley is a short drive or long country walk away offering a popular village pub, The Jolly Waggoner and Church Farm Cafe and Shop. The nearby towns of Stevenage, Buntingford and Ware are all a short drive away providing more amenities including a choice of mainline train stations serving London.



70 Fore Street, Hertford, Hertfordshire, SG14 1BY



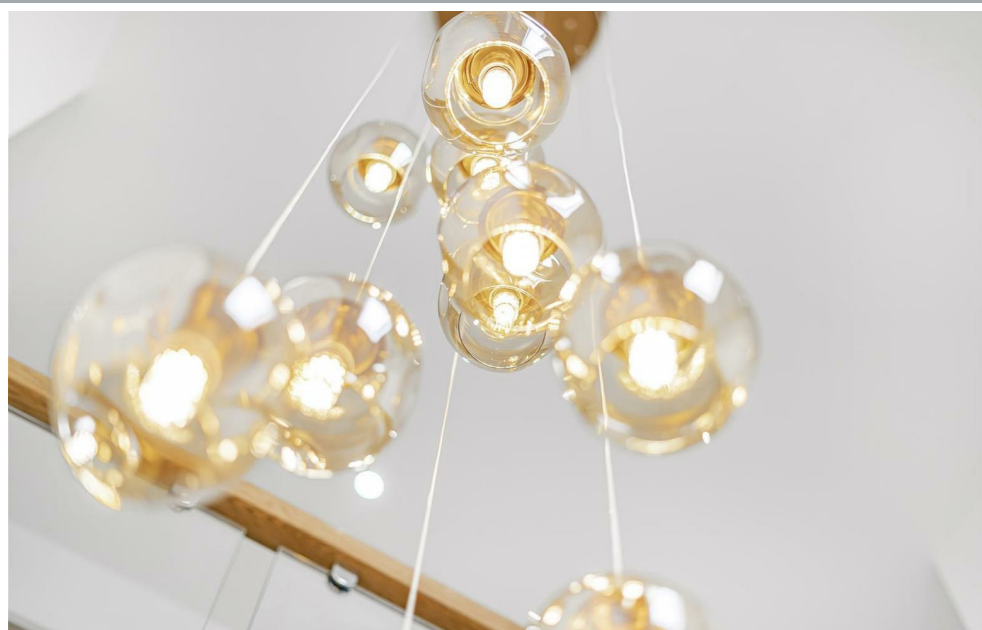
70 Fore Street, Hertford, Hertfordshire, SG14 1BY



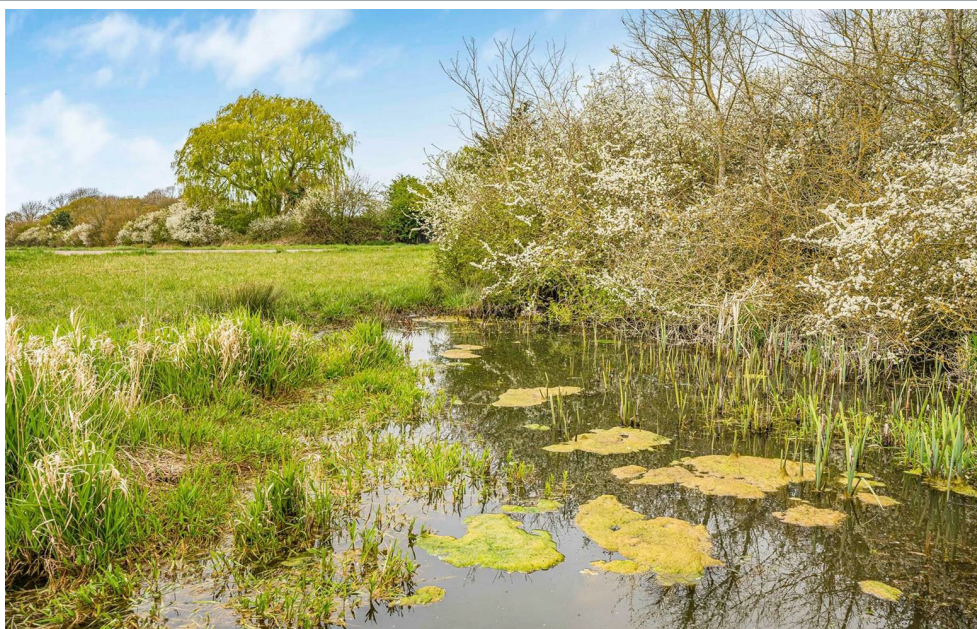
70 Fore Street, Hertford, Hertfordshire, SG14 1BY



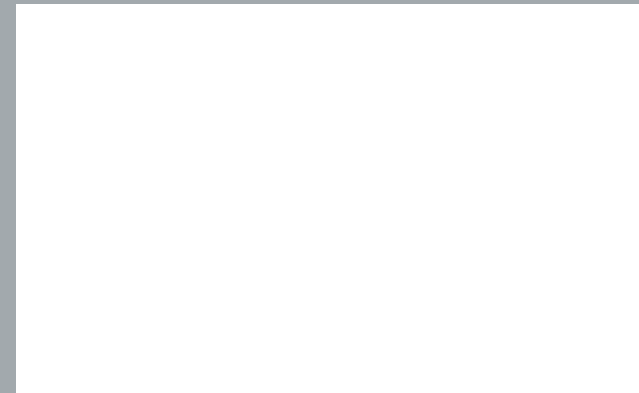
70 Fore Street, Hertford, Hertfordshire, SG14 1BY



70 Fore Street, Hertford, Hertfordshire, SG14 1BY



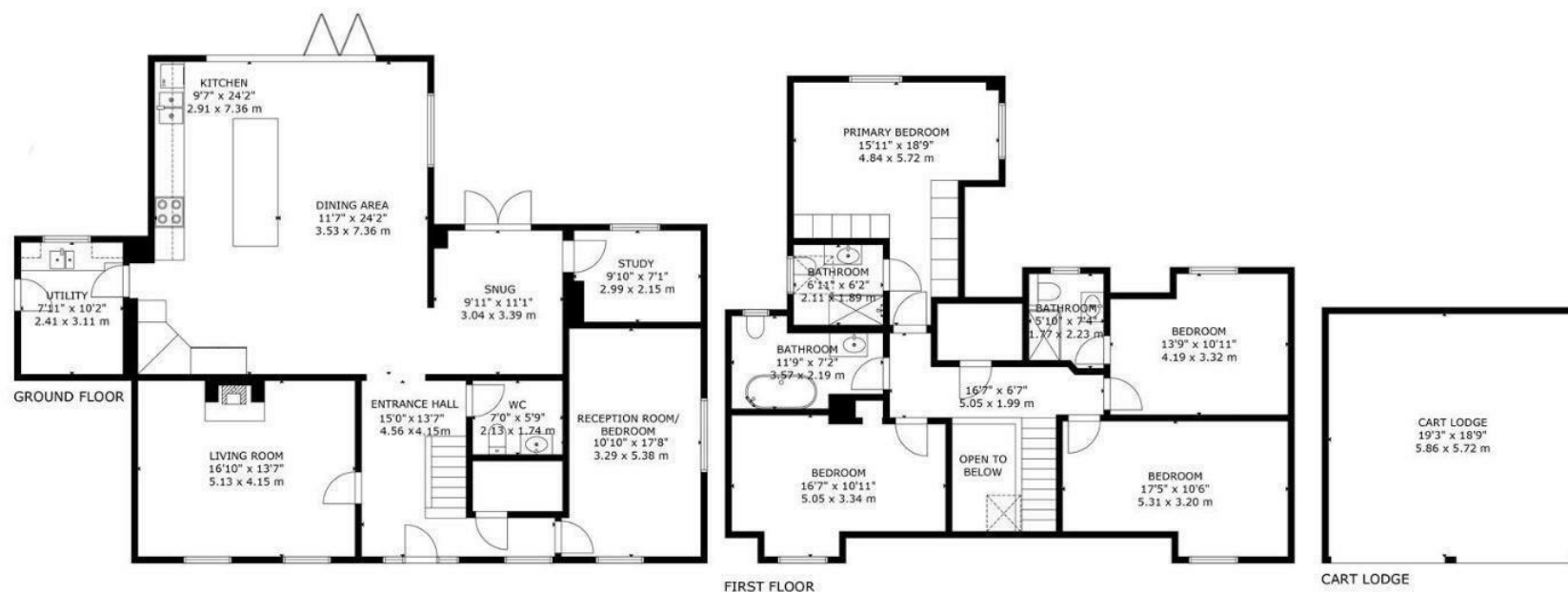
70 Fore Street, Hertford, Hertfordshire, SG14 1BY



70 Fore Street, Hertford, Hertfordshire, SG14 1BY

ASH TREE LODGE, ARDELEY

Total Approximate Internal Area: 230m sq/ 2483 sq ft (exc Cart Lodge)



EXCLUDED AREA: CART LODGE: 361 sq.ft
SIZE AND DIMENSIONS ARE APPROXIMATE, ACTUAL MAY VARY

These particulars, whilst believed to be accurate are set out as a general outline only for guidance and do not constitute any part of an offer or contract. Intending purchasers should not rely on them as statements of representation of fact, but must satisfy themselves by inspection or otherwise as to their accuracy. No person in this firm's employment has the authority to make or give any representation or warranty in respect of the property.



stevenoates.com