



Providence House, Albury Road, Little Hadham

SG11 2DL

Price Guide £895,000



stevenoates.com



Providence House Albury Road, Little Hadham, Hertfordshire, SG11 2DL

A truly handsome 5 bedroom detached period home located within the centre of this highly sought after village yet only a short drive from Bishops Stortford. The charming accommodation comprises of a large reception hall with downstairs wc/shower room, leading to a study/boot room, 2 main reception rooms and a laundry room. To the rear of the ground floor is a good size kitchen/diner with a separate utility room. On the first floor, there are 4 bedrooms and a family bathroom, whilst bedroom five is on the second floor. Externally, the property is accessed via a gated driveway providing ample parking and the attractive rear gardens directly adjoin open countryside. Chain Free - Call to view.

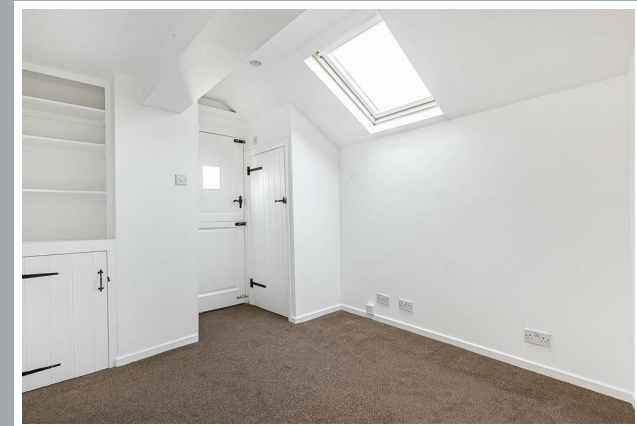
Little Hadham is a most sought after quaint essential village lying only a couple of miles south of Bishops Stortford. The village offers a thriving community, with a village pub and primary school, whilst is only a short distance from the A120 which connects to both the A10 and M11, along with Stansted Airport. Bishops Stortford is a popular market town with an excellent choice of shops, restaurants, along with some of the best private and state schooling available. Bishops Stortford mainline train station provides fast services to London's Liverpool Street (approx. 38 mins) via the Stansted Express.



70 Fore Street, Hertford, Hertfordshire, SG14 1BY



70 Fore Street, Hertford, Hertfordshire, SG14 1BY



70 Fore Street, Hertford, Hertfordshire, SG14 1BY



70 Fore Street, Hertford, Hertfordshire, SG14 1BY



70 Fore Street, Hertford, Hertfordshire, SG14 1BY



70 Fore Street, Hertford, Hertfordshire, SG14 1BY



70 Fore Street, Hertford, Hertfordshire, SG14 1BY



70 Fore Street, Hertford, Hertfordshire, SG14 1BY



70 Fore Street, Hertford, Hertfordshire, SG14 1BY

Approximate Gross Internal Area 2027 sq ft - 188 sq m

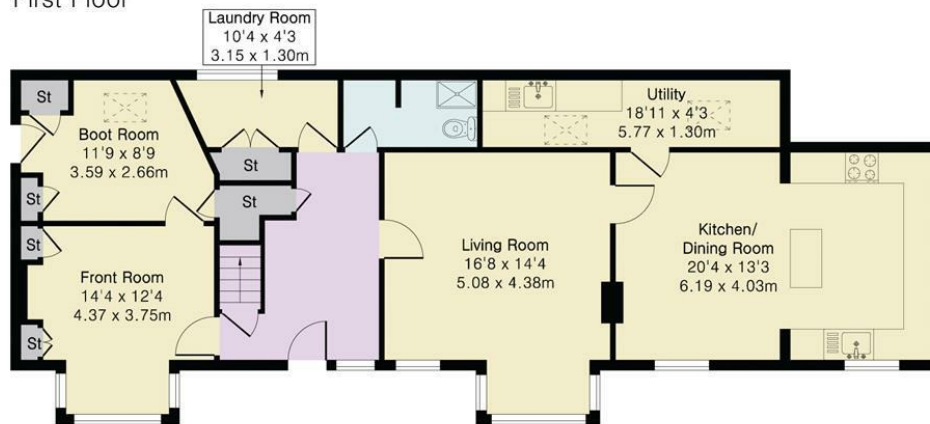
Ground Floor Area 1036 sq ft – 96 sq m

First Floor Area 870 sq ft – 81 sq m

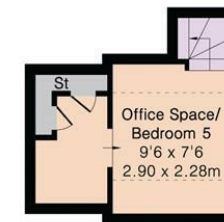
Loft Room Area 121 sq ft – 11 sq m



First Floor



Ground Floor



Loft Room

These particulars, whilst believed to be accurate are set out as a general outline only for guidance and do not constitute any part of an offer or contract. Intending purchasers should not rely on them as statements of representation of fact, but must satisfy themselves by inspection or otherwise as to their accuracy. No person in this firm's employment has the authority to make or give any representation or warranty in respect of the property.



stevenoates.com