



7, Oak Tree Close, Hertford Heath

SG13 7RG

Offers In Excess Of £415,000



stevenoates.com



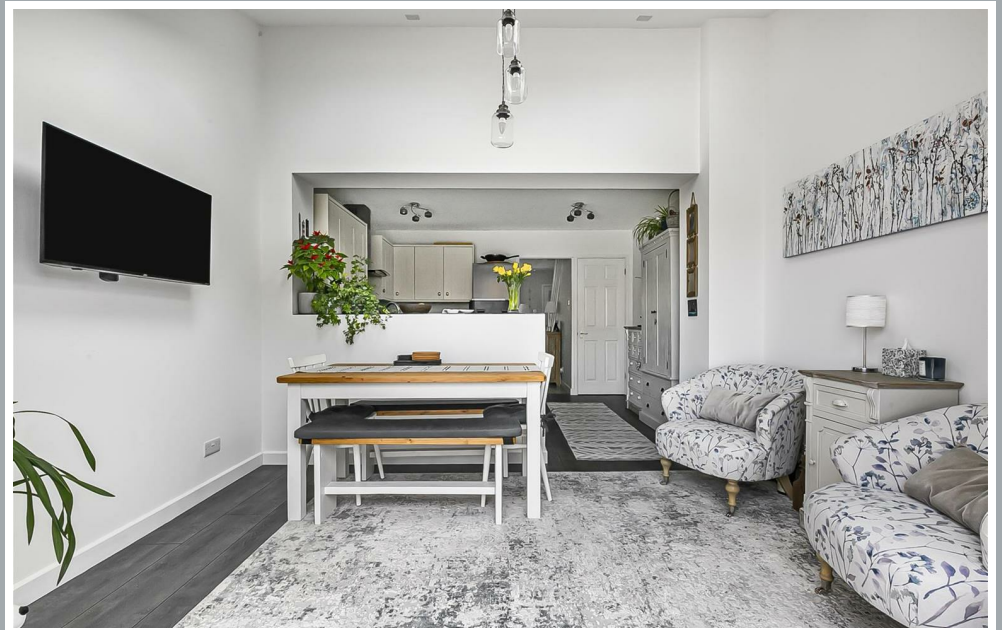
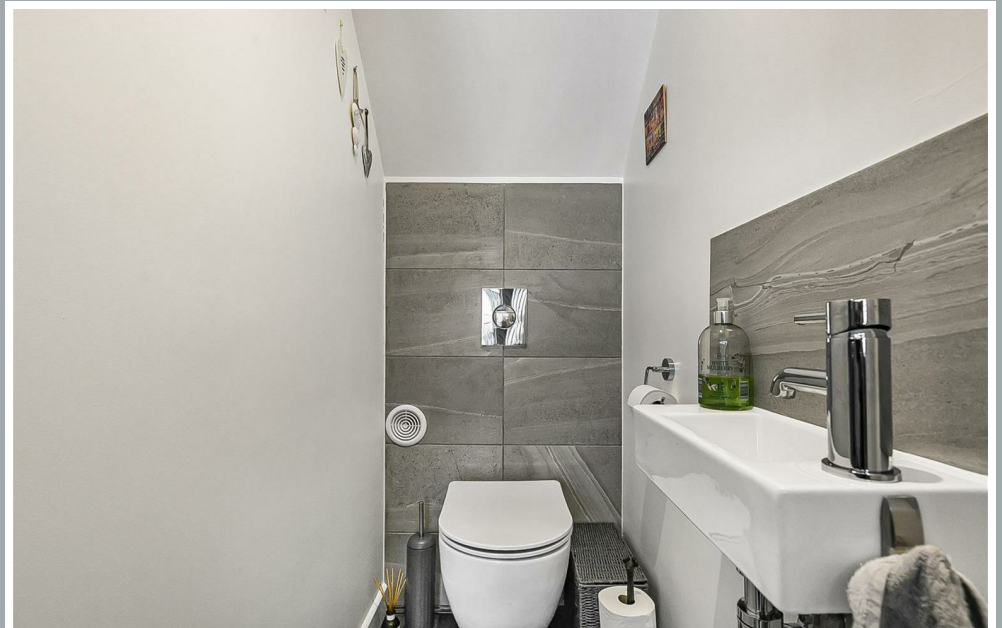
7 Oak Tree Close, Hertford Heath, Herts, SG13 7RG

Steven Oates are delighted to offer this immaculately presented two-bedroom home which is perfectly nestled in this quiet cul-de-sac in the popular village of Hertford Heath. This stunning property is truly one of a kind having been extended and improved by the current owner throughout boasting modern and spacious accommodation. As you step inside, you are welcomed through the entrance porch before heading into the beautiful living room, the rear of the property has been extended forming part of this impressive open plan kitchen/dining room perfect for entertaining guests. There are also bi-fold doors which open straight out onto the garden. Upstairs, this property benefits from two-bedrooms and a luxury shower suite which has been completely refitted. Externally, this property includes beautifully landscaped front and rear gardens which are paved and low maintenance. There is also allocated parking. Internal viewing highly recommended !

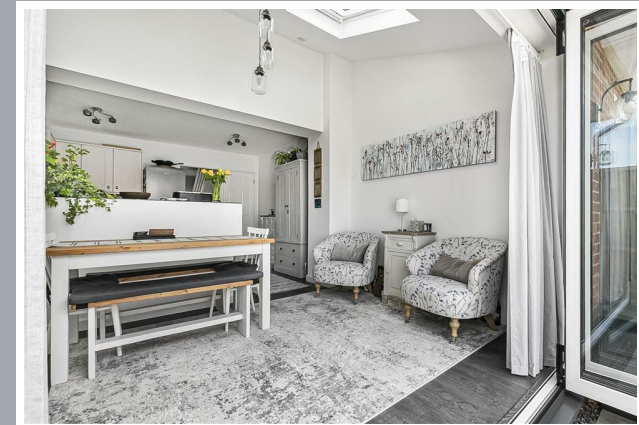
The village offers excellent localised amenities including a village shop, three pubs and a village primary school. The nearby towns of Hertford and Hoddesdon are both within a short drive away and provide a good selection of shops, restaurants and mainline train stations with fast services to Central London.



70 Fore Street, Hertford, Hertfordshire, SG14 1BY

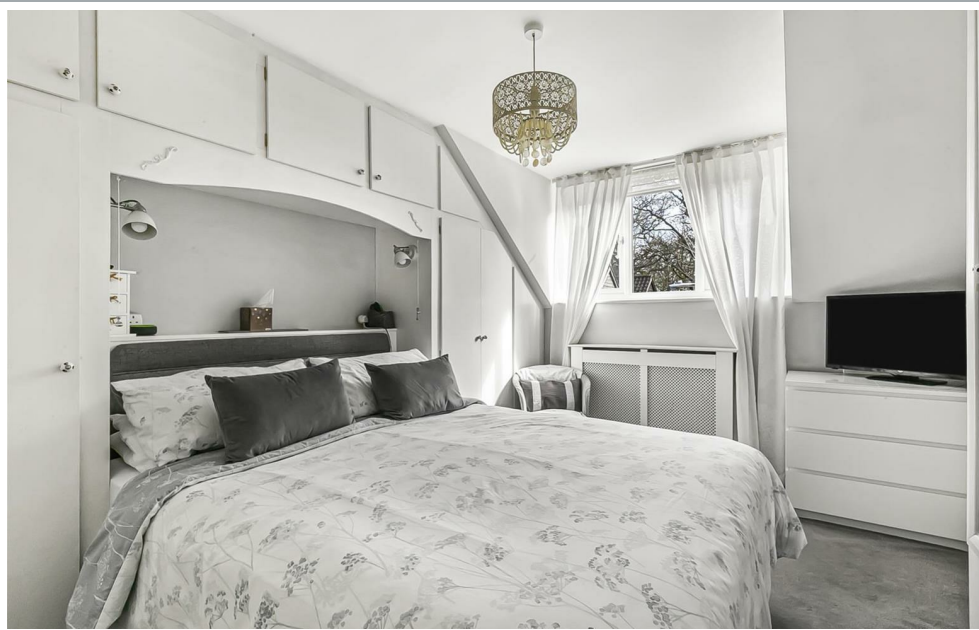


70 Fore Street, Hertford, Hertfordshire, SG14 1BY

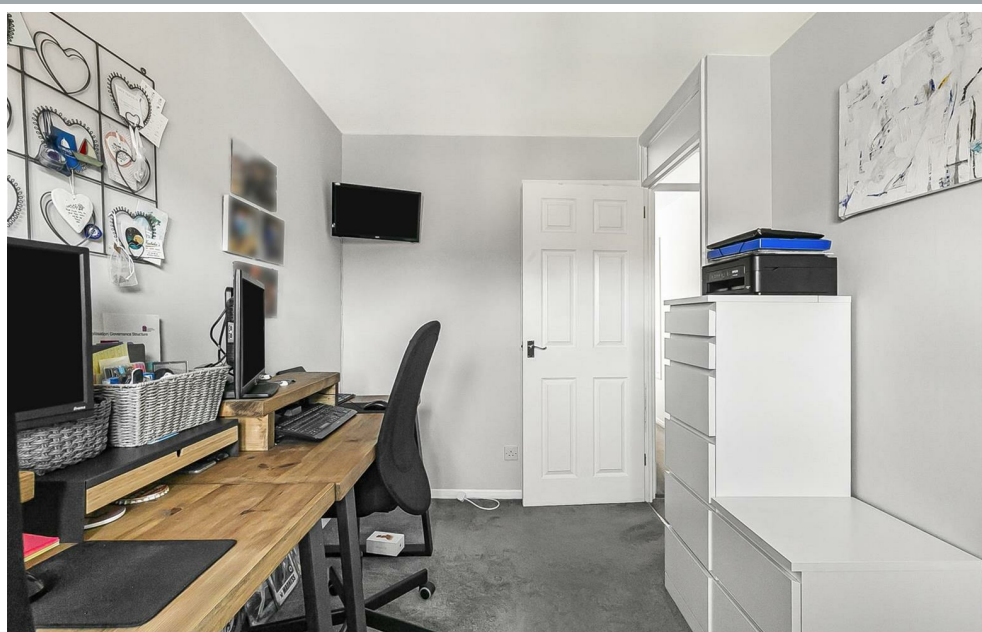


70 Fore Street, Hertford, Hertfordshire, SG14 1BY





70 Fore Street, Hertford, Hertfordshire, SG14 1BY

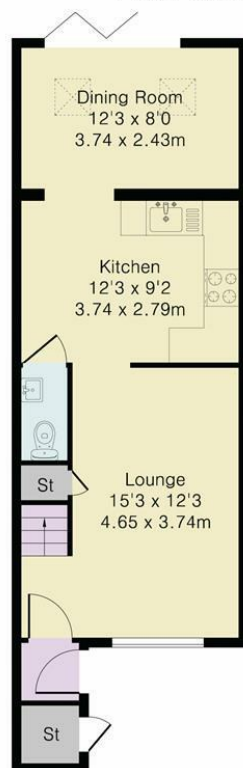


70 Fore Street, Hertford, Hertfordshire, SG14 1BY

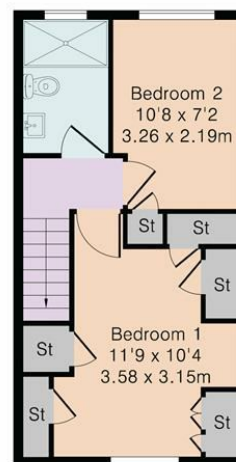
Approximate Gross Internal Area 735 sq ft - 68 sq m

Ground Floor Area 432 sq ft – 40 sq m

First Floor Area 303 sq ft – 28 sq m



Ground Floor



First Floor



Although Pink Plan Ltd ensures the highest level of accuracy, measurements of doors, windows and rooms are approximate and no responsibility is taken for error, omission or misstatement. These plans are for representation purposes only as defined by RICS code of measuring practise. No guarantee is given on total square footage of the property within this plan. The figure icon is for initial guidance only and should not be relied on as a basis of valuation.



These particulars, whilst believed to be accurate are set out as a general outline only for guidance and do not constitute any part of an offer or contract. Intending purchasers should not rely on them as statements of representation of fact, but must satisfy themselves by inspection or otherwise as to their accuracy. No person in this firm's employment has the authority to make or give any representation or warranty in respect of the property.



stevenoates.com