



The Chester, Hazel Park, Gresley Way, Stevenage
SG2 7BG
Guide Price £715,000



stevenoates.com



The Chester Hazel Park, Gresley Way, Stevenage, Hertfordshire, SG2 7BG

The Chester - A beautiful 3 bedroom/3 bathroom detached family home located on the exciting new development at Hazel Park. Part of the Redrow Heritage collection, The Chester offers spacious accommodation which includes a spacious entrance hall with downstairs wc, living room, a fully fitted open plan family kitchen/diner and a large utility room. On the first floor, there are 4 bedrooms, a family bathroom and en-suite to the main bedroom. 1461 square feet

Hazel Park's semi-rural setting adjoining beautiful Hertfordshire countryside, yet is only a short drive from Stevenage's many amenities including a choice of shopping centres, both local and chain restaurants, along with Stevenage train station with fast services to London.



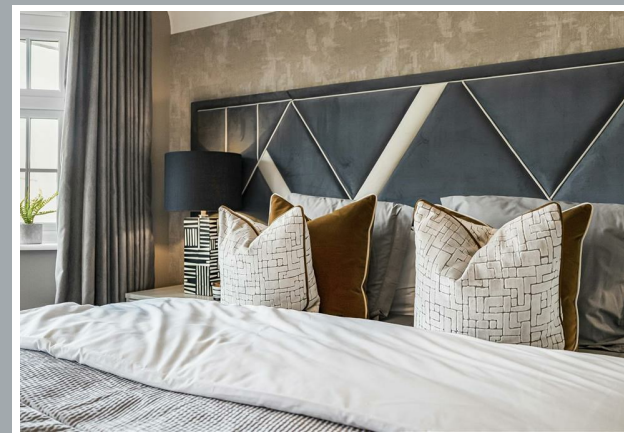
70 Fore Street, Hertford, Hertfordshire, SG14 1BY



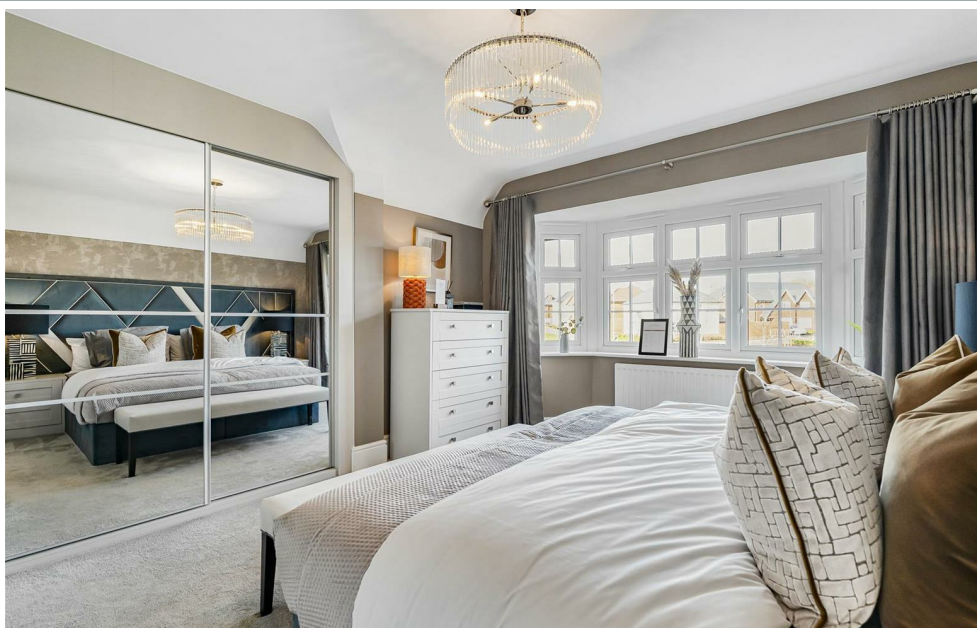
70 Fore Street, Hertford, Hertfordshire, SG14 1BY



70 Fore Street, Hertford, Hertfordshire, SG14 1BY



70 Fore Street, Hertford, Hertfordshire, SG14 1BY



70 Fore Street, Hertford, Hertfordshire, SG14 1BY



GROUND FLOOR



FIRST FLOOR

THE CHESTER

GROUND FLOOR

1 Lounge	16'5" x 10'10"	5.01 x 3.30 m
2 Kitchen	11'5" x 10'2"	3.48 x 3.11 m
3 Dining	12'4" x 10'9"	3.76 x 3.28 m
4 Family	12'4" x 9'8"	3.76 x 2.94 m
5 Cloaks	4'10" x 6'0"	1.48 x 1.82 m
6 Utility	9'7" x 6'3"	2.92 x 1.90 m
7 Garage	17'5" x 9'6"	5.30 x 2.90 m

FIRST FLOOR

8 Bedroom 1	13'4" x 10'2"	4.07 x 3.11 m
9 En-suite	8'0" x 3'11"	2.44 x 1.19 m
10 Bedroom 2	13'1" x 9'5"	3.99 x 2.88 m
11 Store	6'9" x 4'4"	2.07 x 1.32 m
12 Study	12'0" x 7'9"	3.66 x 2.37 m
13 Bedroom 3	11'10" x 8'9"	3.61 x 2.67 m
14 Bathroom	7'11" x 6'4"	2.42 x 1.93 m

These particulars, whilst believed to be accurate are set out as a general outline only for guidance and do not constitute any part of an offer or contract. Intending purchasers should not rely on them as statements of representation of fact, but must satisfy themselves by inspection or otherwise as to their accuracy. No person in this firm's employment has the authority to make or give any representation or warranty in respect of the property.



stevenoates.com