



12, Priors Wood Road, Hertford Heath

SG13 7QH

Guide Price £465,000



stevenoates.com



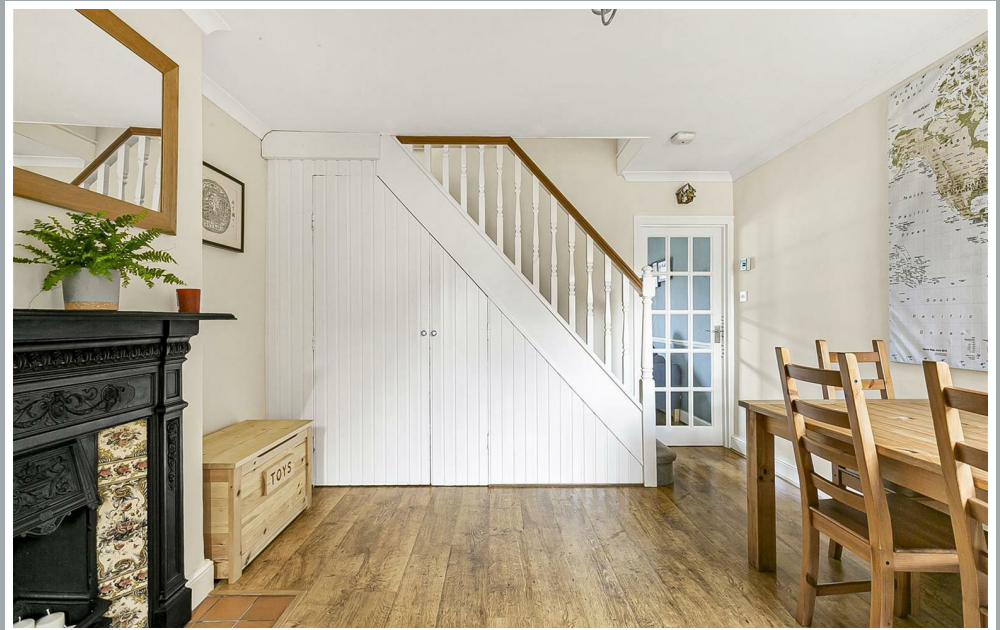
12 Priors Wood Road, Hertford Heath, Hertfordshire, SG13 7QH

Steven Oates are delighted to offer this attractive three bedroom mid terrace house situated in a popular turning, in the desirable village of Hertford Heath. The property benefits from character features, mature rear garden and scope for further extension (STPP). Arranged over two levels, the property comprises of a lounge, dining room, kitchen and ground floor bathroom. On the first floor, there are three bedrooms. Call now to view.

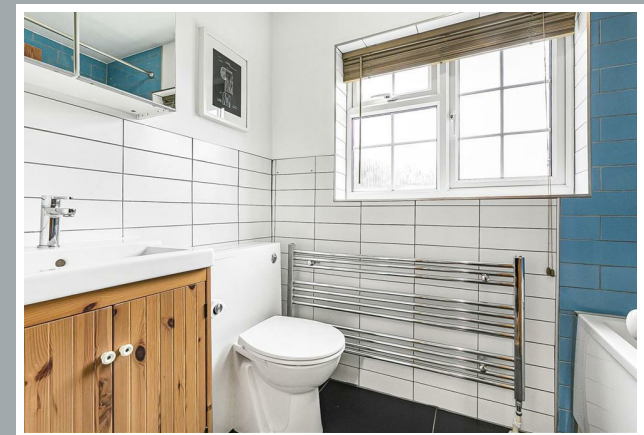
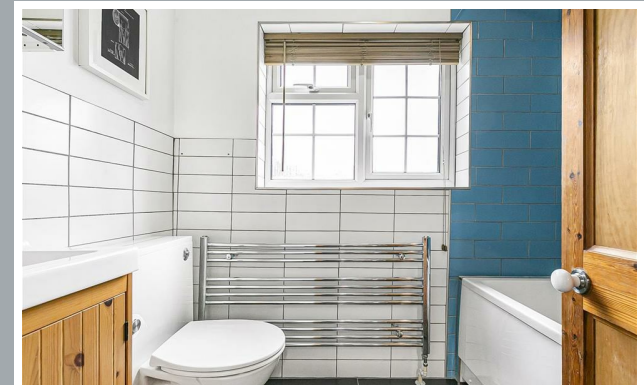
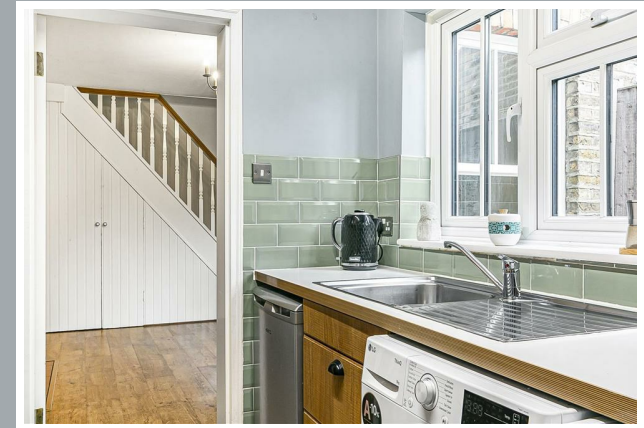
The property is located only a 'stones throw' away from the pretty village green which has a village pub, The Goat and direct access to a large protected woodlands. The village offers excellent local facilities including a village store, additional 2 pubs, local primary school and the ever popular Haileybury Private School. The nearby town of Hertford is only approximately 1.5 miles away and provides a variety of shops, restaurants and schools, along with a choice of two mainline train stations which serve London.



70 Fore Street, Hertford, Hertfordshire, SG14 1BY



70 Fore Street, Hertford, Hertfordshire, SG14 1BY



70 Fore Street, Hertford, Hertfordshire, SG14 1BY





70 Fore Street, Hertford, Hertfordshire, SG14 1BY



70 Fore Street, Hertford, Hertfordshire, SG14 1BY

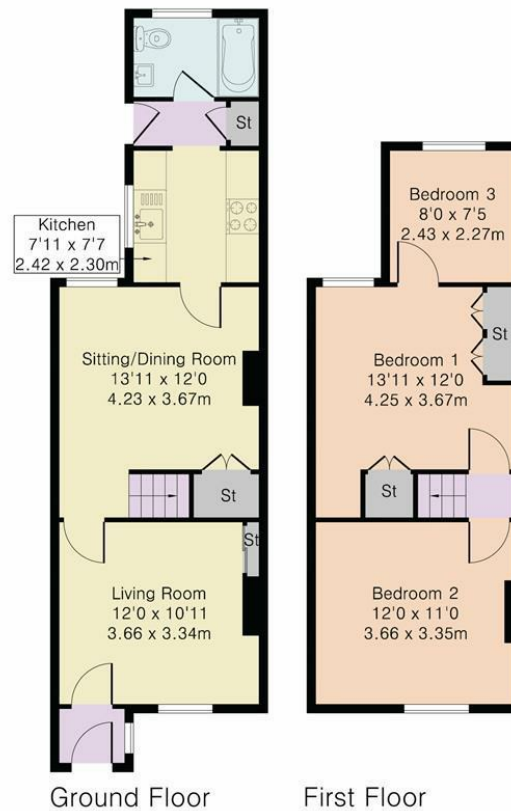


70 Fore Street, Hertford, Hertfordshire, SG14 1BY

Approximate Gross Internal Area 800 sq ft - 75 sq m

Ground Floor Area 437 sq ft – 41 sq m

First Floor Area 363 sq ft – 34 sq m



Although Pink Plan Ltd ensures the highest level of accuracy, measurements of doors, windows and rooms are approximate and no responsibility is taken for error, omission or misstatement. These plans are for representation purposes only as defined by RICS code of measuring practise. No guarantee is given on total square footage of the property within this plan. The figure icon is for initial guidance only and should not be relied on as a basis of valuation.



These particulars, whilst believed to be accurate are set out as a general outline only for guidance and do not constitute any part of an offer or contract. Intending purchasers should not rely on them as statements of representation of fact, but must satisfy themselves by inspection or otherwise as to their accuracy. No person in this firm's employment has the authority to make or give any representation or warranty in respect of the property.



stevenoates.com