



2, School House Gardens, Much Hadham

SG10 6DL

Price Guide £495,000



[stevenoates.com](http://stevenoates.com)





## 2 School House Gardens, Tower Hill, Much Hadham, Hertfordshire, SG10 6DL

**LARGER THAN AVERAGE** - A beautiful semi-detached modern character home offering over 950 ft<sup>2</sup> including generously proportioned rooms. The bright and airy accommodation comprises of an entrance hall with downstairs cloakroom, spacious kitchen/breakfast room, large open living/dining room. On the first floor, there is a large master bedroom, second double bedroom and a bathroom with bath and shower. There is the possibility of converting into 3 bedrooms, if required. Externally, there is driveway parking, a single garage and attractive gardens. Viewing is highly recommended.

The property is located with the heart of the highly sought after village, only a short distance from the village high street and amenities. The pretty village of Much Hadham offers a thriving community and well supported amenities which include an excellent village primary school, popular village pub, shop, doctor's surgery and a dentist to name a few. The nearby towns of Ware, Hertford and Bishops Stortford are all within easy reach offering a wider choice of facilities and mainline train stations with fast services to London, along with excellent secondary schooling.





70 Fore Street, Hertford, Hertfordshire, SG14 1BY





70 Fore Street, Hertford, Hertfordshire, SG14 1BY





70 Fore Street, Hertford, Hertfordshire, SG14 1BY









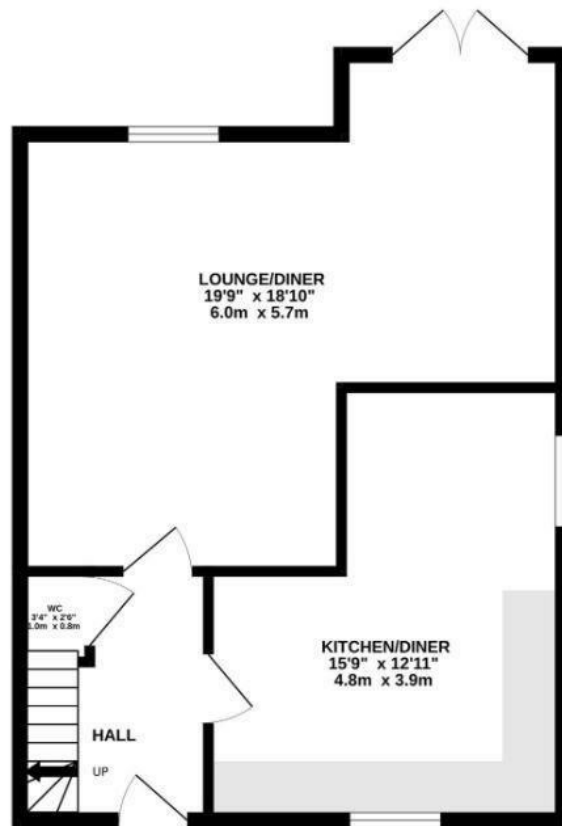
70 Fore Street, Hertford, Hertfordshire, SG14 1BY



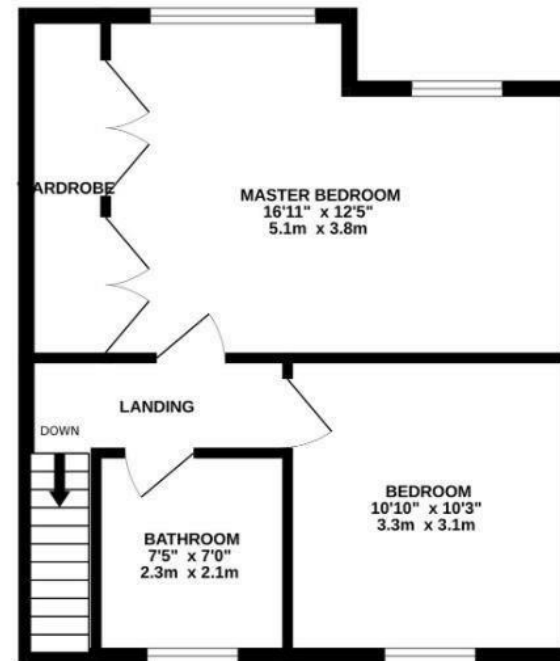


70 Fore Street, Hertford, Hertfordshire, SG14 1BY





**GROUND FLOOR**  
517 sq.ft. (48.0 sq.m.) approx.



**1ST FLOOR**  
439 sq.ft. (40.8 sq.m.) approx.

**TOTAL FLOOR AREA : 956 sq.ft. (88.9 sq.m.) approx.**

Whilst every attempt has been made to ensure the accuracy of the floorplan contained here, measurements of doors, windows, rooms and any other items are approximate and no responsibility is taken for any error, omission or mis-statement. This plan is for illustrative purposes only and should be used as such by any prospective purchaser. The services, systems and appliances shown have not been tested and no guarantee as to their operability or efficiency can be given.  
Made with Metropix ©2023

These particulars, whilst believed to be accurate are set out as a general outline only for guidance and do not constitute any part of an offer or contract. Intending purchasers should not rely on them as statements of representation of fact, but must satisfy themselves by inspection or otherwise as to their accuracy. No person in this firm's employment has the authority to make or give any representation or warranty in respect of the property.



stevengoates.com