



Lodge Farmhouse, Epping Green, Little Berkhamsted

SG13 8NQ

Guide Price £1,200,000



stevenoates.com



Lodge Farmhouse Epping Green, Little Berkhamsted, Hertfordshire, SG13 8NQ

A truly stunning four bedroom detached family home offering versatile accommodation and set within this excellent country retreat location. The ground floor accommodation includes a large entrance hallway opening to spacious open plan kitchen/dining room, 29ft lounge with exposed brick fireplace, utility room and ground floor WC. d downstairs shower room/guest wc. On the first floor, there are four bedrooms, all of which have their own en-suite bathroom or shower rooms. Externally, the home is set in a secluded location via gates and provides off street parking for several cars and a mature rear garden of 0.5 of an acre.

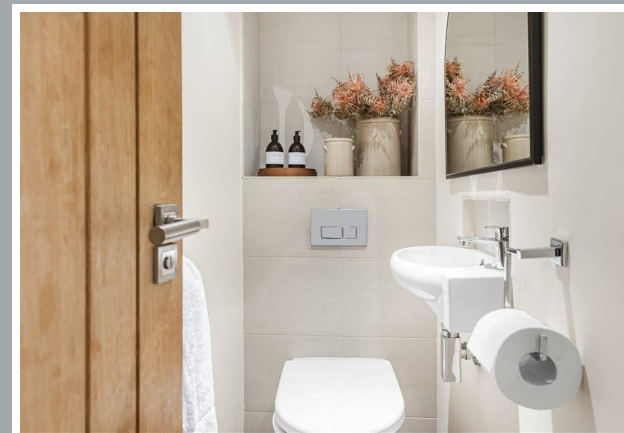
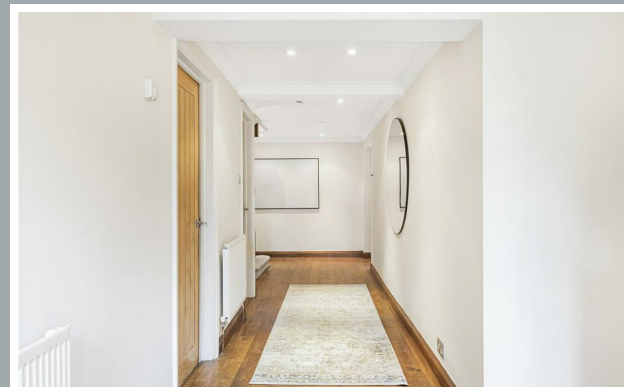
This fine family home is located within the small hamlet of Epping Green. The main village of Little Berkhamsted is only a short distance away providing a village pub and shop, with the nearby towns of Hertford and Cuffley are both a short drive away providing a wide choice of shops, restaurants and mainline train station serving London and The City.



70 Fore Street, Hertford, Hertfordshire, SG14 1BY



70 Fore Street, Hertford, Hertfordshire, SG14 1BY



70 Fore Street, Hertford, Hertfordshire, SG14 1BY



70 Fore Street, Hertford, Hertfordshire, SG14 1BY



70 Fore Street, Hertford, Hertfordshire, SG14 1BY



70 Fore Street, Hertford, Hertfordshire, SG14 1BY



70 Fore Street, Hertford, Hertfordshire, SG14 1BY



70 Fore Street, Hertford, Hertfordshire, SG14 1BY



70 Fore Street, Hertford, Hertfordshire, SG14 1BY

Approximate Gross Internal Area 2425 sq ft – 225 sq m

Ground Floor Area 1339 sq ft – 124 sq m

First Floor Area 1086 sq ft – 101 sq m



Although Pink Plan Ltd ensures the highest level of accuracy, measurements of doors, windows and rooms are approximate and no responsibility is taken for error, omission or misstatement. These plans are for representation purposes only as defined by RICS code of measuring practise. No guarantee is given on total square footage of the property within this plan. The figure icon is for initial guidance only and should not be relied on as a basis of valuation.



These particulars, whilst believed to be accurate are set out as a general outline only for guidance and do not constitute any part of an offer or contract. Intending purchasers should not rely on them as statements of representation of fact, but must satisfy themselves by inspection or otherwise as to their accuracy. No person in this firm's employment has the authority to make or give any representation or warranty in respect of the property.



stevenoates.com