



18, Jeffries Road, Ware
SG12 7BB
£975,000



stevenoates.com



Bonfield House, 18 Jeffries Road, Ware, SG12 7BB

Steven Oates are delighted to offer, this charming and rarely available four bedroom detached Edwardian family home situated in a prime location, convenient for Ware's multiple facilities. The property benefits from stunning original features and is arranged over three levels. On the ground floor, there are three reception rooms, kitchen and ground floor cloakroom. The basement is accessed via the kitchen. On the first floor, there are four bedrooms (three doubles and one single) and family bathroom. The master bedroom has a balcony to enjoy a nice morning coffee. Externally, there are two garages, one of which has power and lighting and off street parking. The secluded garden benefits from some mature shrubs and borders and wraps around the house. There is scope for further extension (STPP) and the house has the added benefit of being offered with no onward chain. Internal viewing highly recommended.

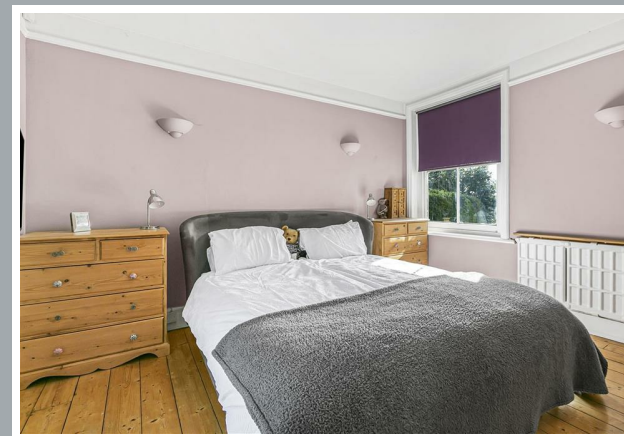
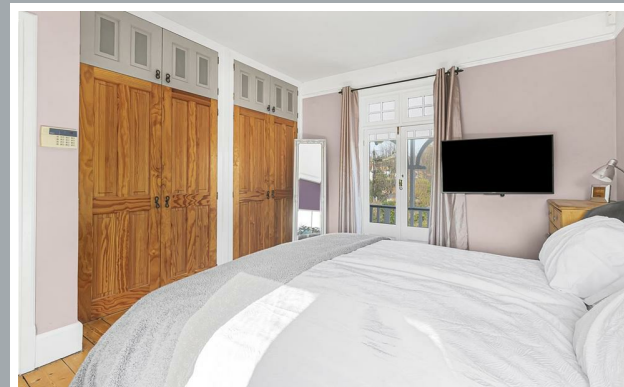
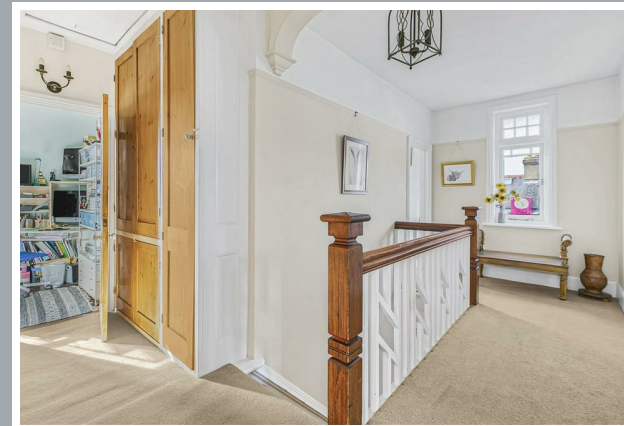
Jeffries Road sits on the eastern side of Ware surrounded by rolling countryside, yet is 0.5 miles from Ware's thriving High Street. Ware town centre offers an excellent choice of shops, restaurants and coffee shops, along with Ware Town train station providing services to London's Liverpool Street.



70 Fore Street, Hertford, Hertfordshire, SG14 1BY



70 Fore Street, Hertford, Hertfordshire, SG14 1BY



70 Fore Street, Hertford, Hertfordshire, SG14 1BY

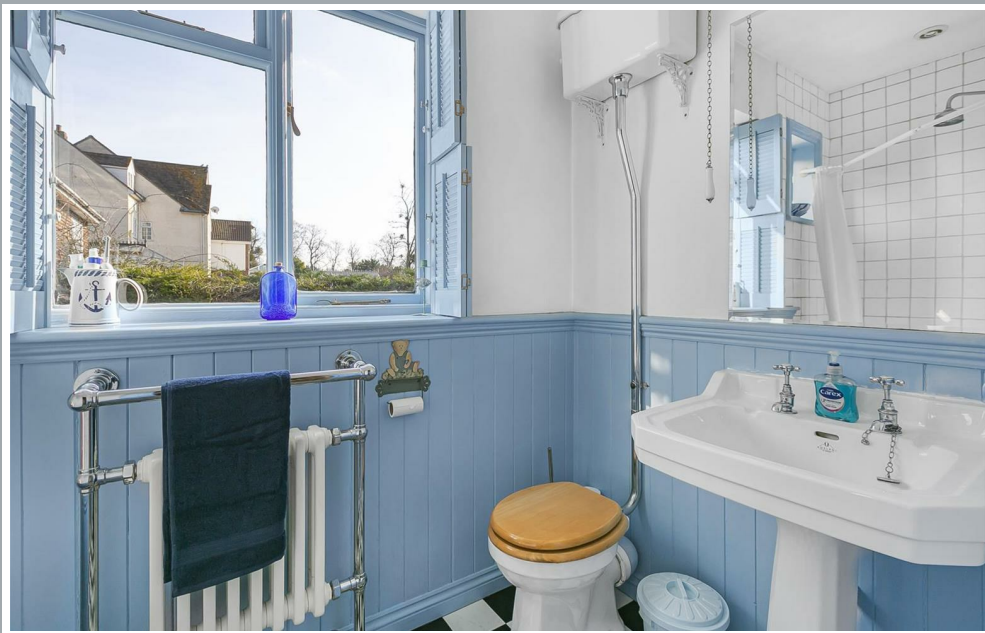




70 Fore Street, Hertford, Hertfordshire, SG14 1BY



70 Fore Street, Hertford, Hertfordshire, SG14 1BY

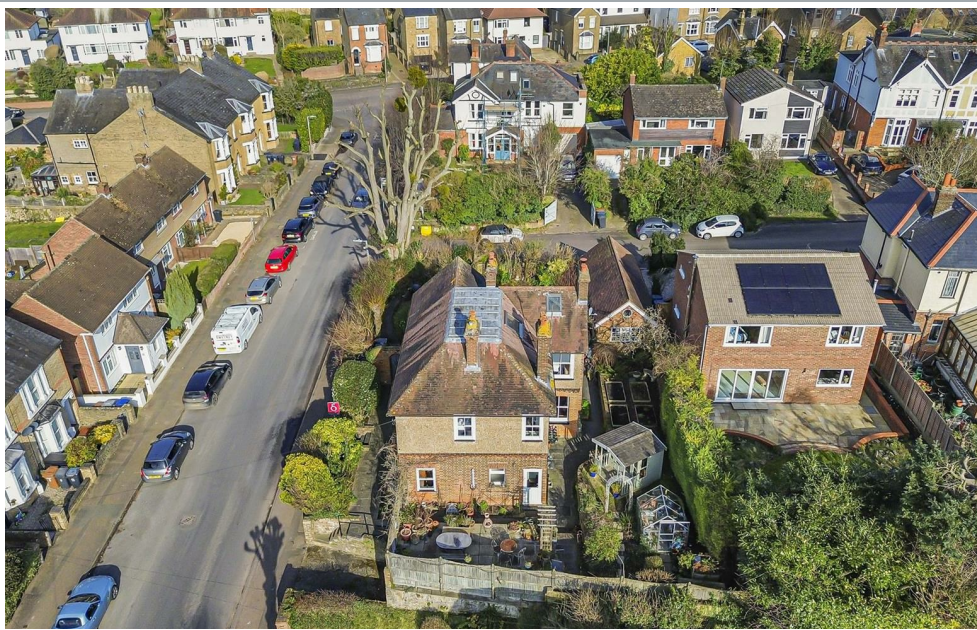


70 Fore Street, Hertford, Hertfordshire, SG14 1BY

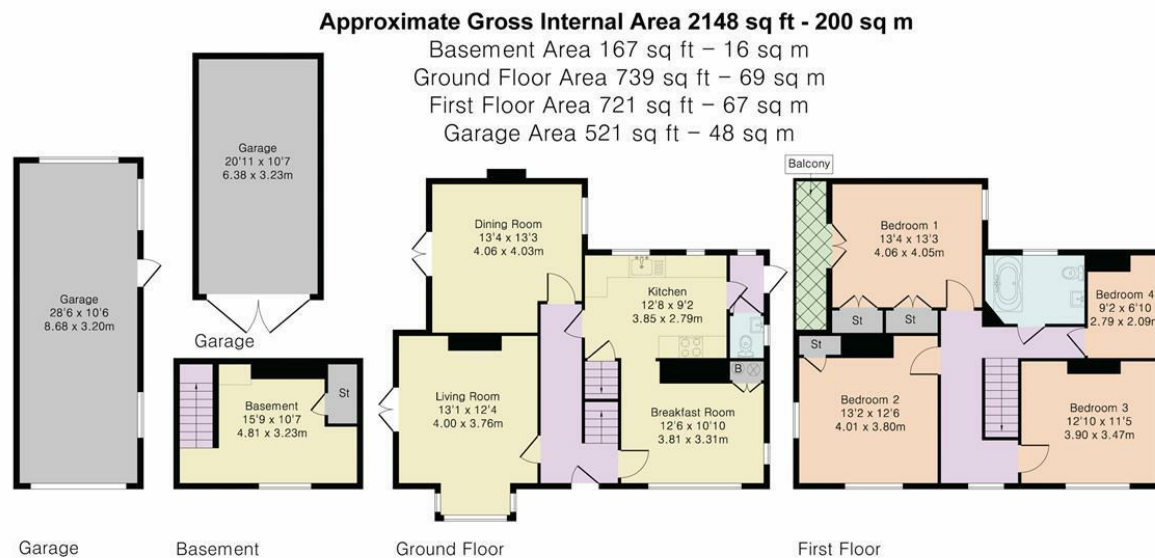




70 Fore Street, Hertford, Hertfordshire, SG14 1BY



70 Fore Street, Hertford, Hertfordshire, SG14 1BY



Although Pink Plan Ltd ensures the highest level of accuracy, measurements of doors, windows and rooms are approximate and no responsibility is taken for error, omission or misstatement. These plans are for representation purposes only as defined by RICS code of measuring practise. No guarantee is given on total square footage of the property within this plan. The figure icon is for initial guidance only and should not be relied on as a basis of valuation.



These particulars, whilst believed to be accurate are set out as a general outline only for guidance and do not constitute any part of an offer or contract. Intending purchasers should not rely on them as statements of representation of fact, but must satisfy themselves by inspection or otherwise as to their accuracy. No person in this firms employment has the authority to make or give any representation or warranty in respect of the property.



stevenoates.com