



29 Edward House, Pegs Lane, Hertford  
SG13 8FQ

Asking Price £260,000



[stevenoates.com](http://stevenoates.com)





## 29 Edward House Pegs Lane, Hertford, SG13 8FQ

**\*\*CHAIN FREE WITH ALLOCTAED PARKING SPACE\*\***

Edward House is located on the edge of Hertford town centre, offering easy access to the town's many shops, restaurants and a choice of supermarkets. The beautiful gardens of Hertford Castle are also within easy reach, along with two mainline train stations serving London. The apartment features a large double bedroom with walk in wardrobe, fully fitted kitchen, shower room, lounge with a Juliet balcony offering stunning views across Hertford and a large store cupboard with plumbing for a washing machine. The complex also has landscaped gardens, Club lounge, Bistro restaurant, Wellness suite, Guest Suite for overnight visitors and a communal lounge with Wi-Fi and patio area. There is also a lift access to all floors and a mobility scooter charging room.

Edward House is located on the edge of Hertford town centre with a thriving community feel with 24 hour on site staffing and amazing facilities for the residents to enjoy. There is incredibly easy access to the town's shops, restaurants and a choice of supermarkets. The beautiful gardens of Hertford Castle are also within easy reach, along with two mainline train stations serving London.





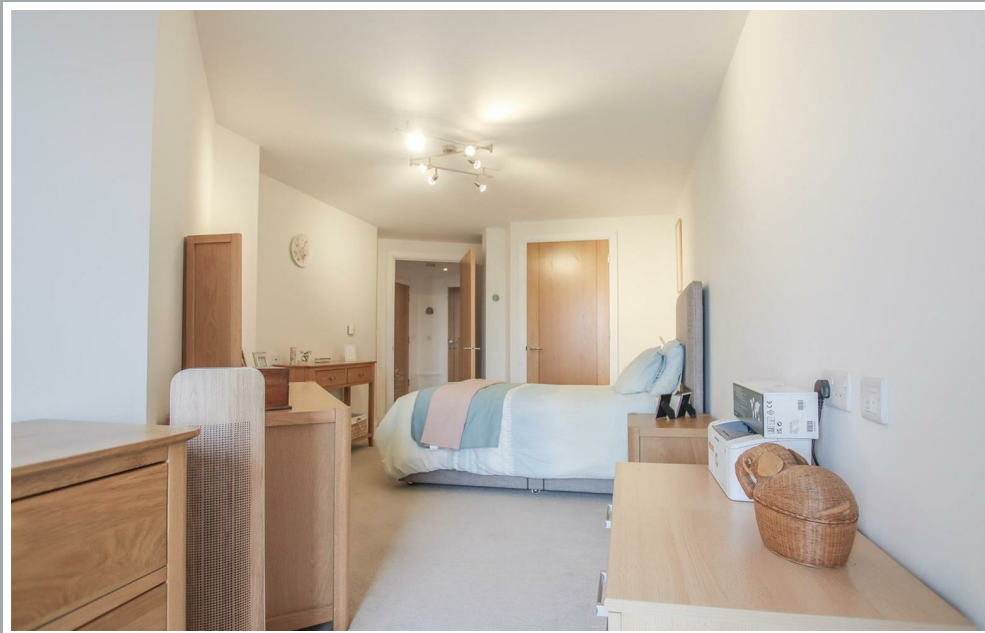
70 Fore Street, Hertford, Hertfordshire, SG14 1BY





70 Fore Street, Hertford, Hertfordshire, SG14 1BY



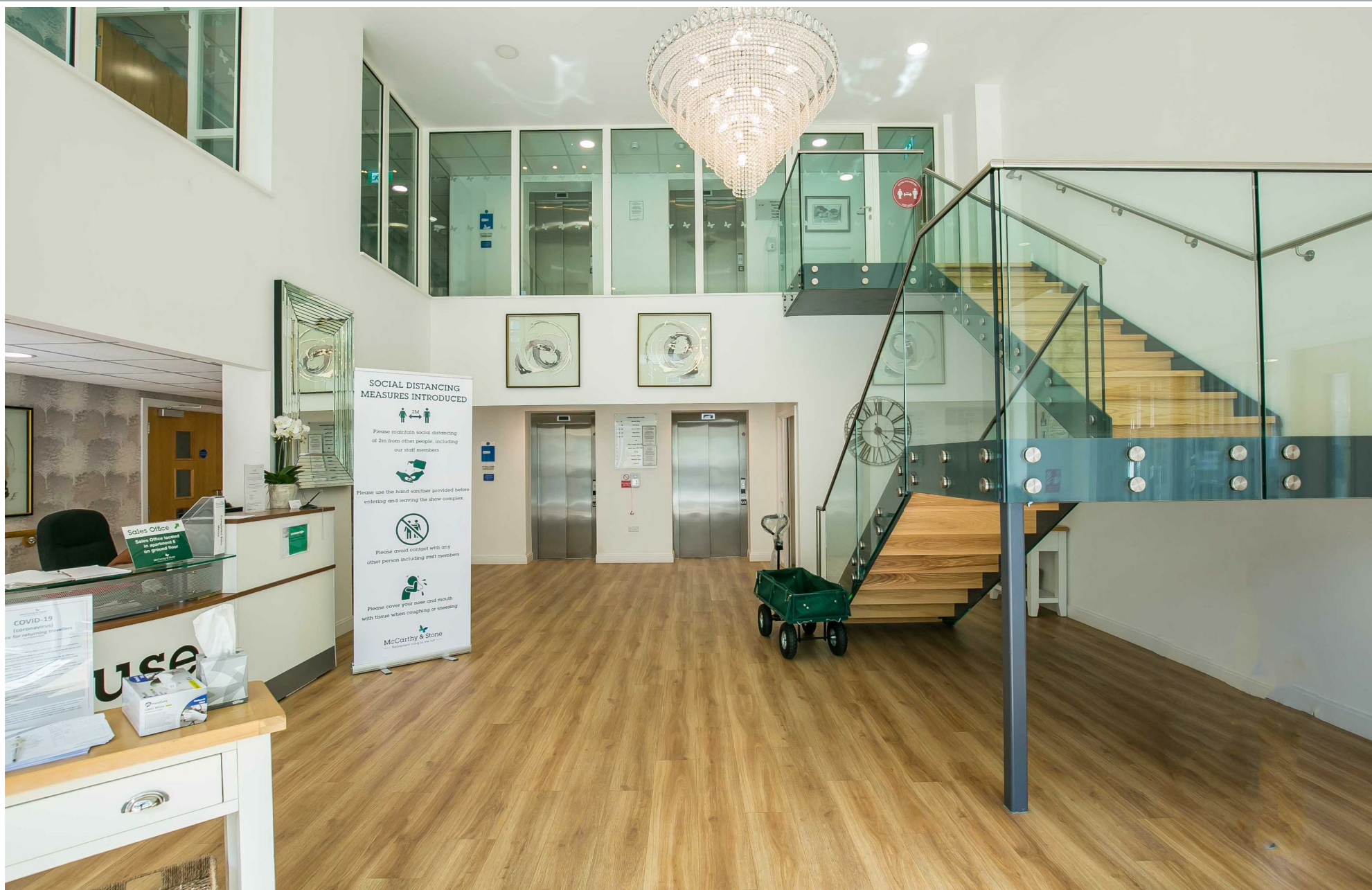


70 Fore Street, Hertford, Hertfordshire, SG14 1BY



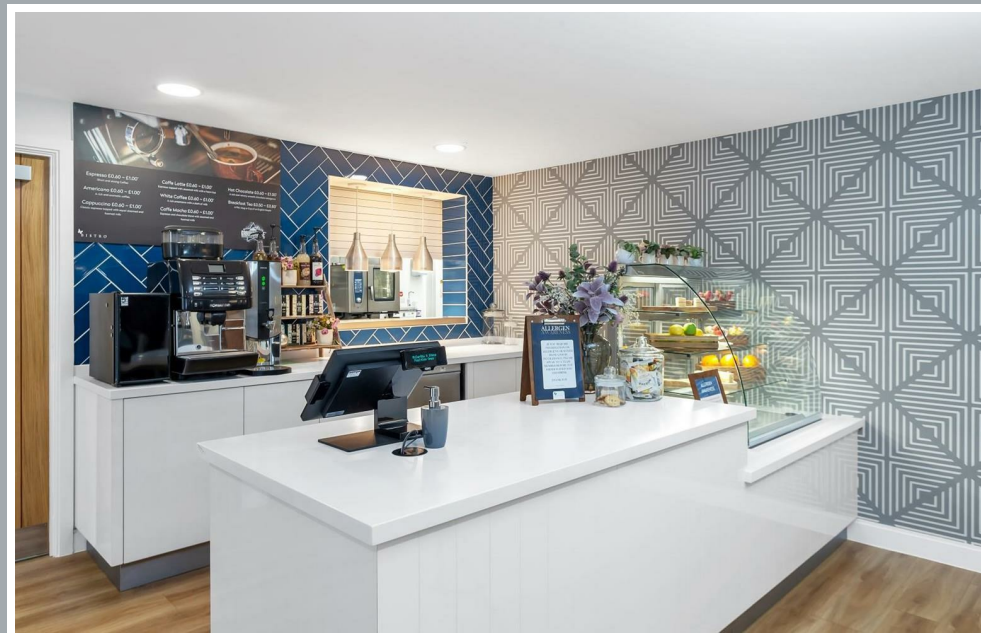






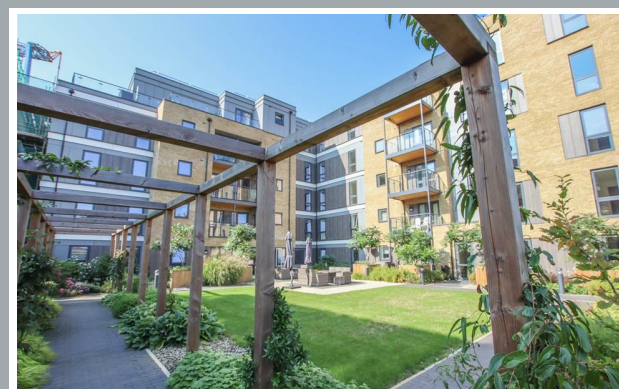
70 Fore Street, Hertford, Hertfordshire, SG14 1BY





70 Fore Street, Hertford, Hertfordshire, SG14 1BY

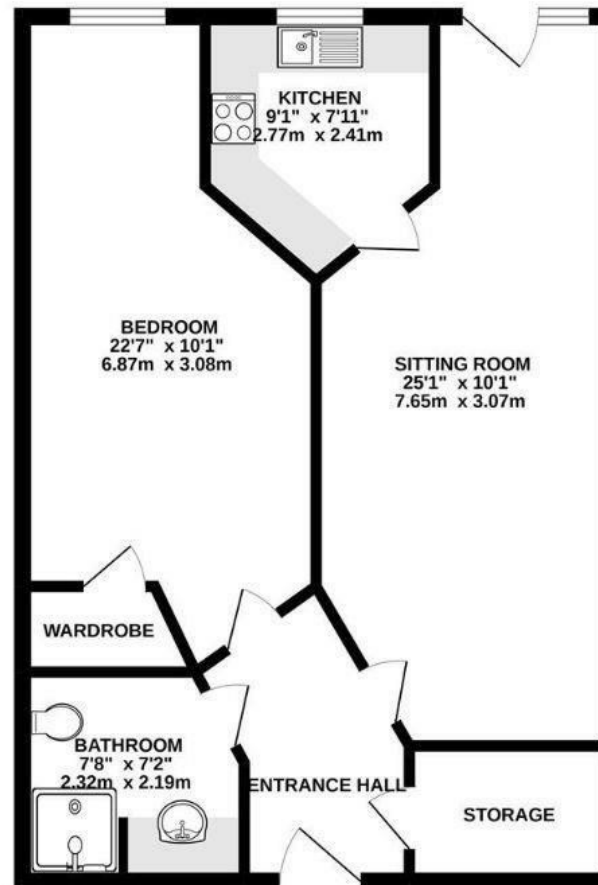




70 Fore Street, Hertford, Hertfordshire, SG14 1BY



GROUND FLOOR  
600 sq.ft. (55.7 sq.m.) approx.



TOTAL FLOOR AREA : 600 sq.ft. (55.7 sq.m.) approx.

Whilst every attempt has been made to ensure the accuracy of the floorplan contained here, measurements of doors, windows, rooms and any other items are approximate and no responsibility is taken for any error, omission or mis-statement. This plan is for illustrative purposes only and should be used as such by any prospective purchaser. The services, systems and appliances shown have not been tested and no guarantee as to their operability or efficiency can be given.  
Made with Metropix ©2022

These particulars, whilst believed to be accurate are set out as a general outline only for guidance and do not constitute any part of an offer or contract. Intending purchasers should not rely on them as statements of representation of fact, but must satisfy themselves by inspection or otherwise as to their accuracy. No person in this firm's employment has the authority to make or give any representation or warranty in respect of the property.



stevenoates.com