



13, Stants View, Hertford

SG13 7FY

Guide Price £290,000



[stevenoates.com](http://stevenoates.com)





## 13 Stants View, Hertford, Herts, SG13 7FY

\*\*\*\*CHAIN FREE\*\*\*\* Steven Oates are pleased to present this stunning two double bedroom apartment conveniently positioned for access to Hertford East Train Station and Town Centre. This bright & airy property is positioned within a gated and secure development benefitting from many great features such as two great size bedrooms, en-suite shower room and main bathroom, a modern fitted kitchen with integrated appliances and a spacious lounge. Outside this property includes an entry phone system and allocated parking with ample visitor bays available.

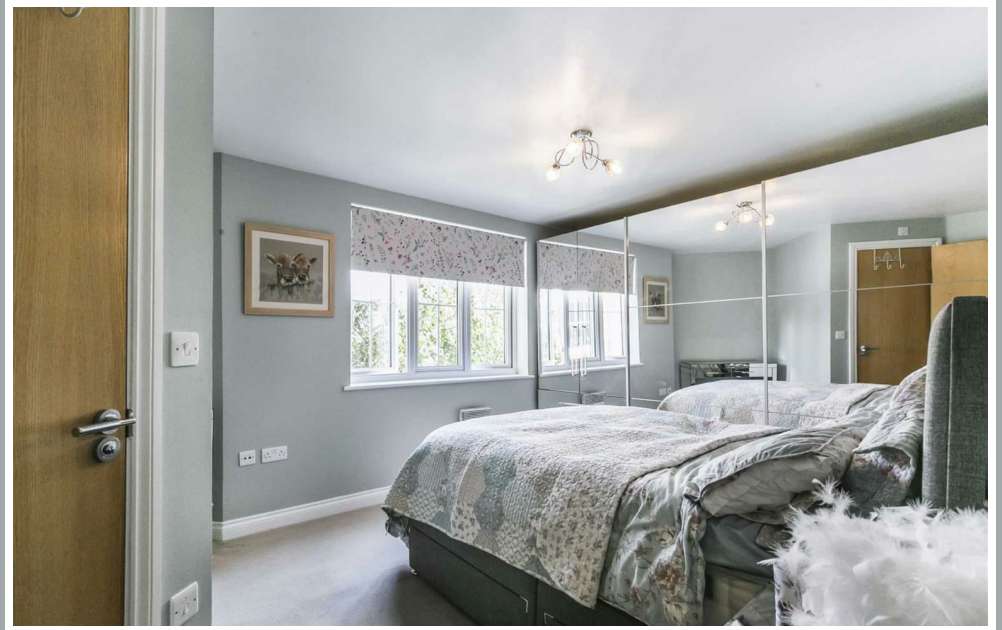
Situated in a small gated development, one of only 15 apartments, located at the end of a cul-de-sac just off Tamworth Road within a desirable 'SG13' location. The property is less than 0.6 Miles from Hertford East train station which provides regular services to London's Liverpool Street. Hertford town centre is also only 0.6 Miles away and provides a wide choice of restaurants, bars and coffee shops.





70 Fore Street, Hertford, Hertfordshire, SG14 1BY





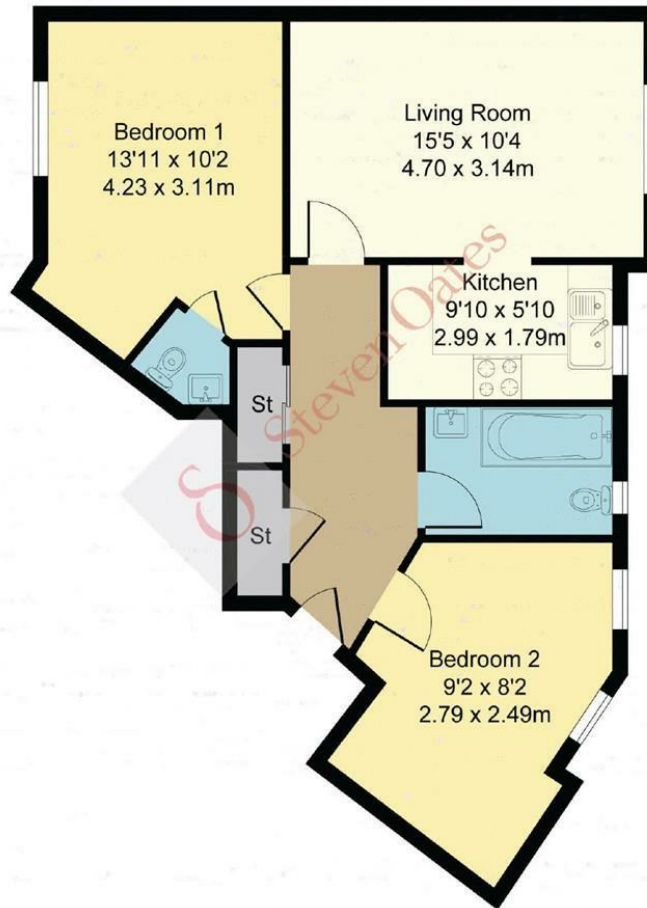
70 Fore Street, Hertford, Hertfordshire, SG14 1BY





70 Fore Street, Hertford, Hertfordshire, SG14 1BY

Approximate Gross Internal Area  
657 sq ft - 61 sq m



These particulars, whilst believed to be accurate are set out as a general outline only for guidance and do not constitute any part of an offer or contract. Intending purchasers should not rely on them as statements of representation of fact, but must satisfy themselves by inspection or otherwise as to their accuracy. No person in this firm's employment has the authority to make or give any representation or warranty in respect of the property.



[stevenoates.com](http://stevenoates.com)