



11, Godfries Close, Tewin
AL6 0LQ
Guide Price £800,000



[stevenoates.com](https://www.stevenoates.com)



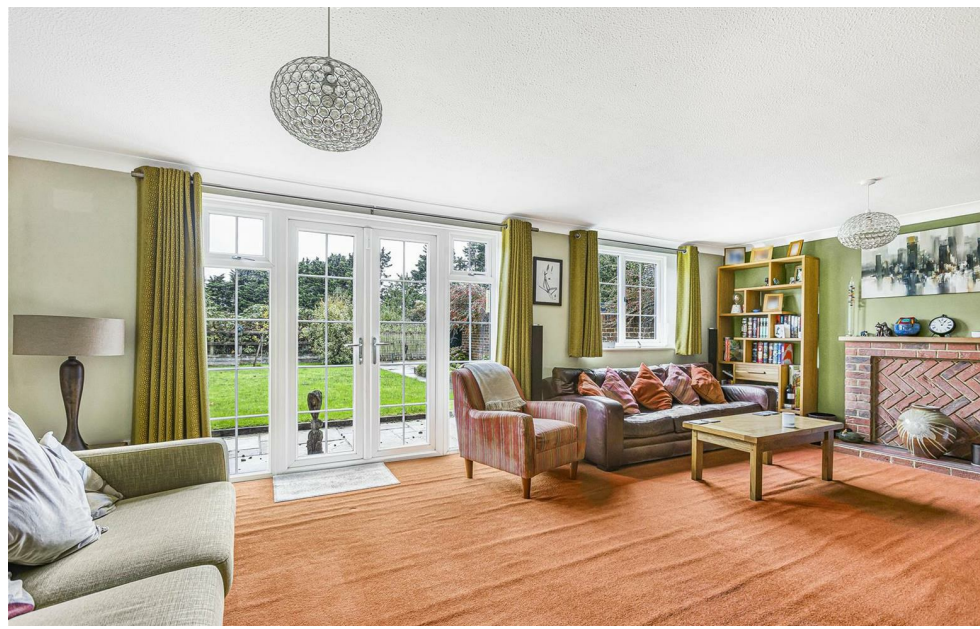
11 Godfries Close, Tewin, Herts, AL6 0LQ

Steven Oates are delighted to offer this well presented four bedroom detached house situated within a quiet cul-de-sac in the highly sought after village of Tewin. The property is arranged over two levels and comprises an entrance lobby leading to a spacious reception room currently being used as a dining room, kitchen, further reception room with direct access onto the garden, ground floor cloakroom and storage cupboard. On the first floor, there are four double bedrooms, the master of which has its own en-suite and additional family bathroom. Externally, there is off street parking for at least three cars, double garage and access to the rear gardens. The rear garden is mature and backs onto a farmers field which gives the garden privacy and seclusion. Internal viewing highly recommended.

Tewin is well situated for commuters and Welwyn North station is about 2 miles away providing an excellent service into Kings Cross (from 19 minutes). The A1(M) is at Welwyn and the A10 can be reached at Hertford, 5 miles. Heath Mount preparatory school is within 10 minutes' drive and Tewin Cowper Junior school is a short walk away.



70 Fore Street, Hertford, Hertfordshire, SG14 1BY



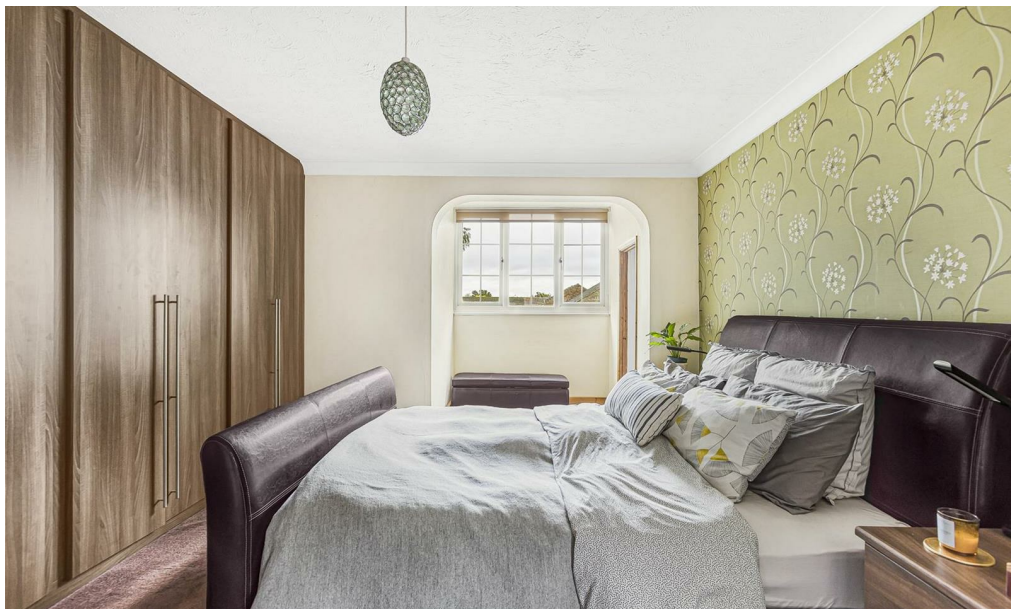
70 Fore Street, Hertford, Hertfordshire, SG14 1BY



70 Fore Street, Hertford, Hertfordshire, SG14 1BY



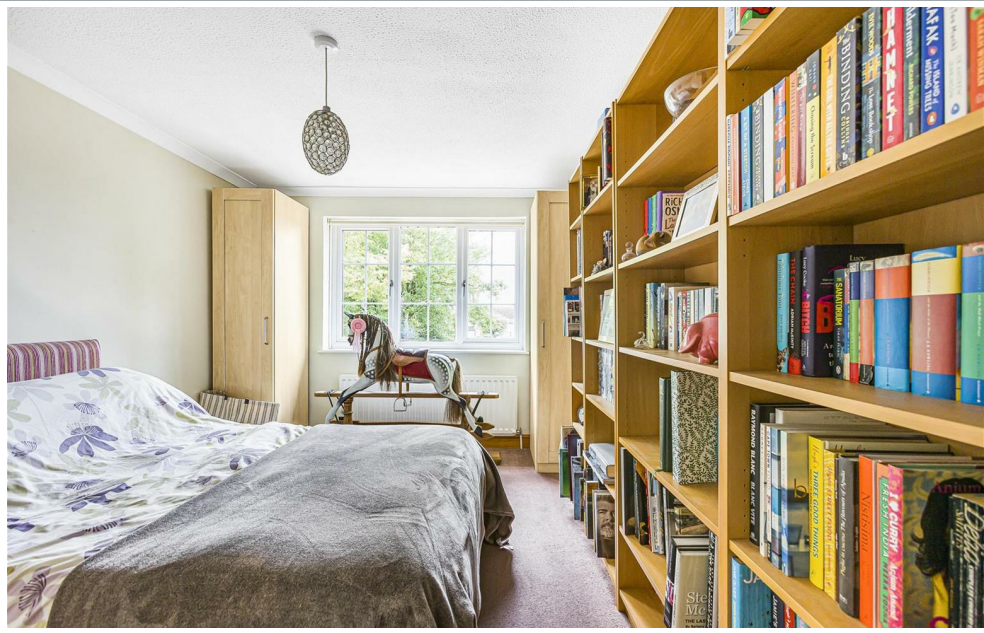
70 Fore Street, Hertford, Hertfordshire, SG14 1BY



70 Fore Street, Hertford, Hertfordshire, SG14 1BY



70 Fore Street, Hertford, Hertfordshire, SG14 1BY



70 Fore Street, Hertford, Hertfordshire, SG14 1BY



70 Fore Street, Hertford, Hertfordshire, SG14 1BY



70 Fore Street, Hertford, Hertfordshire, SG14 1BY

Approximate Gross Internal Area 1857 sq ft - 172 sq m

Ground Floor Area 1001 sq ft - 93 sq m

First Floor Area 856 sq ft - 79 sq m



Although Pink Plan Ltd ensures the highest level of accuracy, measurements of doors, windows and rooms are approximate and no responsibility is taken for error, omission or misstatement. These plans are for representation purposes only as defined by RICS code of measuring practise. No guarantee is given on total square footage of the property within this plan. The figure icon is for initial guidance only and should not be relied on as a basis of valuation.



These particulars, whilst believed to be accurate are set out as a general outline only for guidance and do not constitute any part of an offer or contract. Intending purchasers should not rely on them as statements of representation of fact, but must satisfy themselves by inspection or otherwise as to their accuracy. No person in this firm's employment has the authority to make or give any representation or warranty in respect of the property.



stevenoates.com