



Woodlands, Ware Park, Ware  
SG12 0DY  
Guide Price £2,500,000



[stevenoates.com](http://stevenoates.com)





## Woodlands Ware Park, Ware, Herts, SG12 0DY

An exceptional detached family home occupying a substantial, gated plot of over 2 acres within the Ware Park Estate. The property boasts incredibly light and airy feel throughout the stylish accommodation which comprises of a spacious reception hall with guest cloakroom, 3 principal reception rooms and an additional home office, along with a spacious family kitchen opening into a conservatory, large utility room and a further downstairs wc complete with dog shower. On the first floor, there are 5 bedrooms and 5 bathrooms, with the main bedroom benefiting from a dressing room. Externally, the property is accessed via a gated driveway with a detached triple garage, whilst the beautifully mature gardens surround the house with large mature trees and hedged borders. In addition, to the main gardens, there is a large paddock with a field shelter which is ideal for equine use.

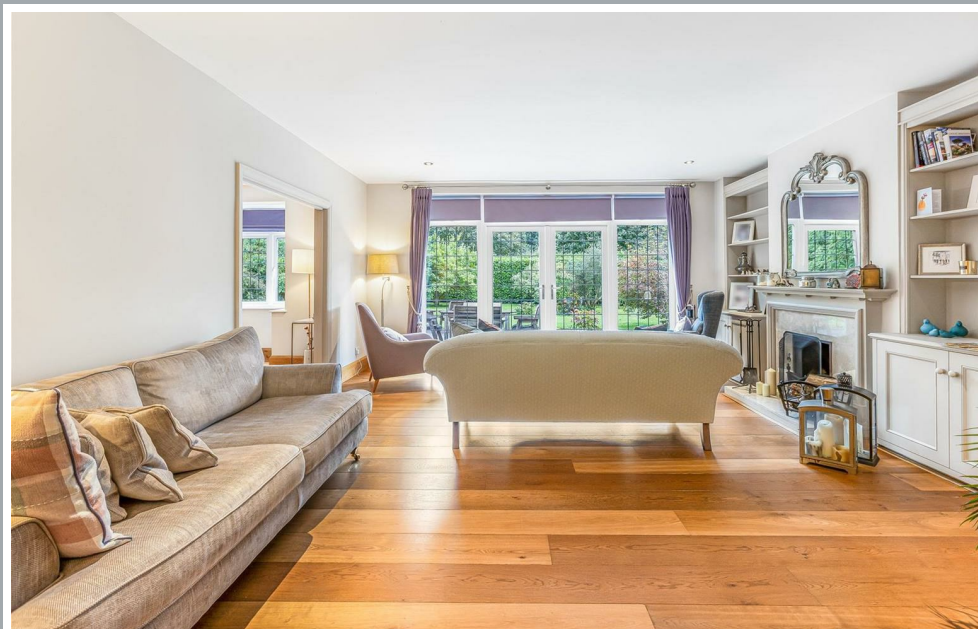
Woodlands is situated within the idyllic grounds of the Ware Park Estate, a notoriously beautiful position being able to enjoy the countryside but also convenient for Hertford Town Centres multiple facilities including transport links into London and Hartham Park. Both Hertford and Ware are within walking distance. There are local shops, bars, restaurants and a wide choice of schooling in both the state and private sectors, offering top-tier education for children across all age groups. There are also the A10/M25 & A1 transport links that are accessed via the A414.





70 Fore Street, Hertford, Hertfordshire, SG14 1BY



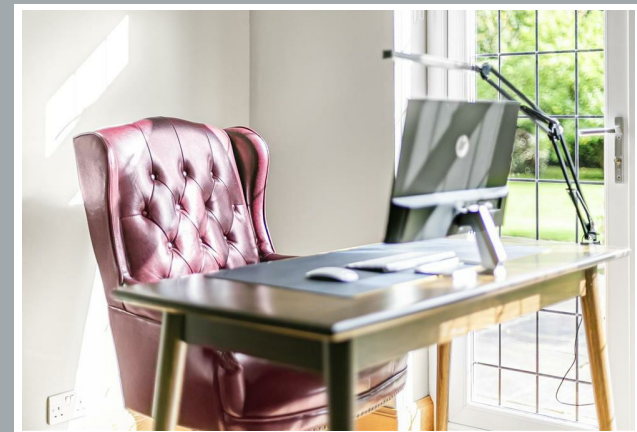


70 Fore Street, Hertford, Hertfordshire, SG14 1BY









70 Fore Street, Hertford, Hertfordshire, SG14 1BY





70 Fore Street, Hertford, Hertfordshire, SG14 1BY





70 Fore Street, Hertford, Hertfordshire, SG14 1BY





70 Fore Street, Hertford, Hertfordshire, SG14 1BY





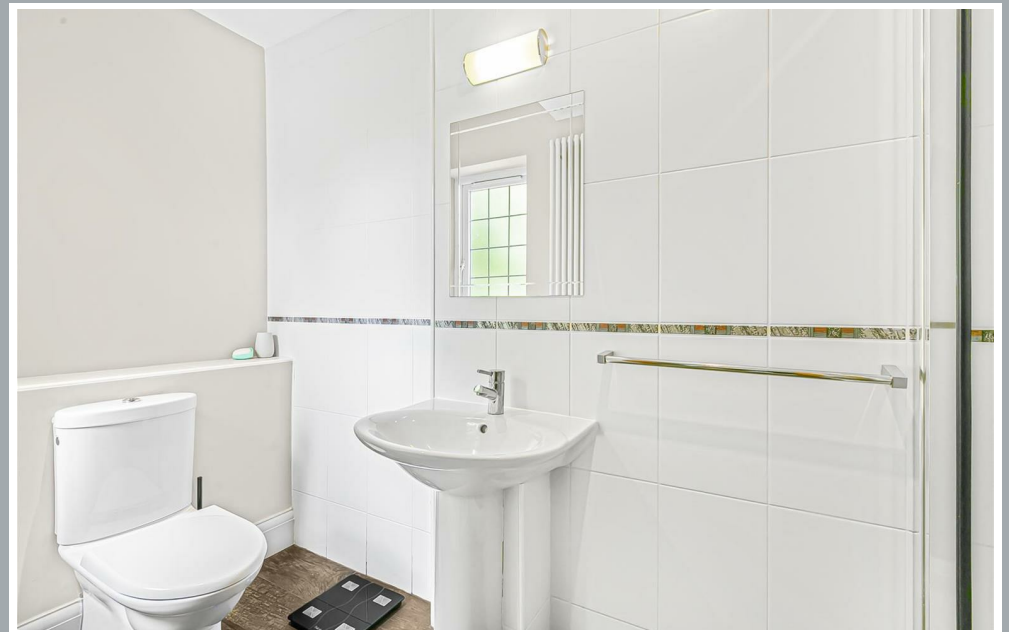
70 Fore Street, Hertford, Hertfordshire, SG14 1BY





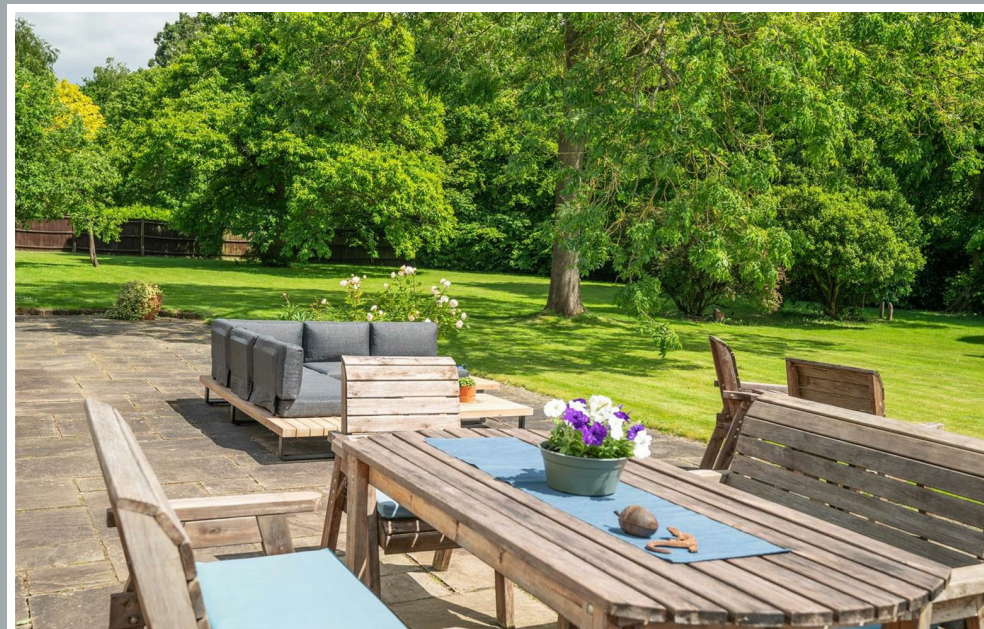
70 Fore Street, Hertford, Hertfordshire, SG14 1BY





70 Fore Street, Hertford, Hertfordshire, SG14 1BY





70 Fore Street, Hertford, Hertfordshire, SG14 1BY





70 Fore Street, Hertford, Hertfordshire, SG14 1BY





70 Fore Street, Hertford, Hertfordshire, SG14 1BY





70 Fore Street, Hertford, Hertfordshire, SG14 1BY





Although Pink Plan Ltd ensures the highest level of accuracy, measurements of doors, windows and rooms are approximate and no responsibility is taken for error, omission or misstatement. These plans are for representation purposes only as defined by RICS code of measuring practise. No guarantee is given on total square footage of the property within this plan. The figure icon is for initial guidance only and should not be relied on as a basis of valuation.



These particulars, whilst believed to be accurate are set out as a general outline only for guidance and do not constitute any part of an offer or contract. Intending purchasers should not rely on them as statements of representation of fact, but must satisfy themselves by inspection or otherwise as to their accuracy. No person in this firms employment has the authority to make or give any representation or warranty in respect of the property.



stevenoates.com