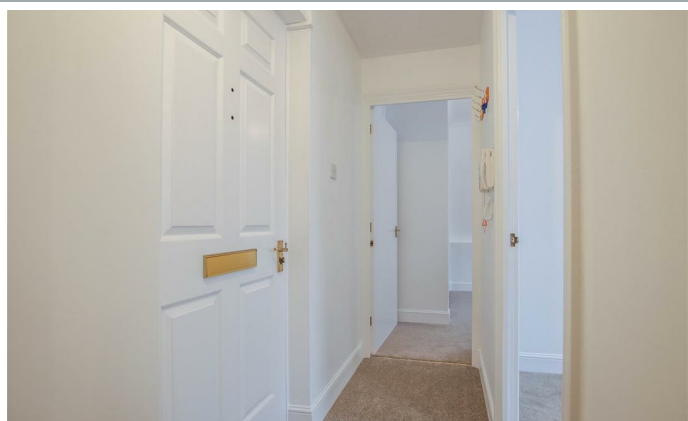




5, Chauncy Court, Hertford
SG14 1DU
Guide Price £135,000





5 Chauncy Court, Hertford, SG14 1DU

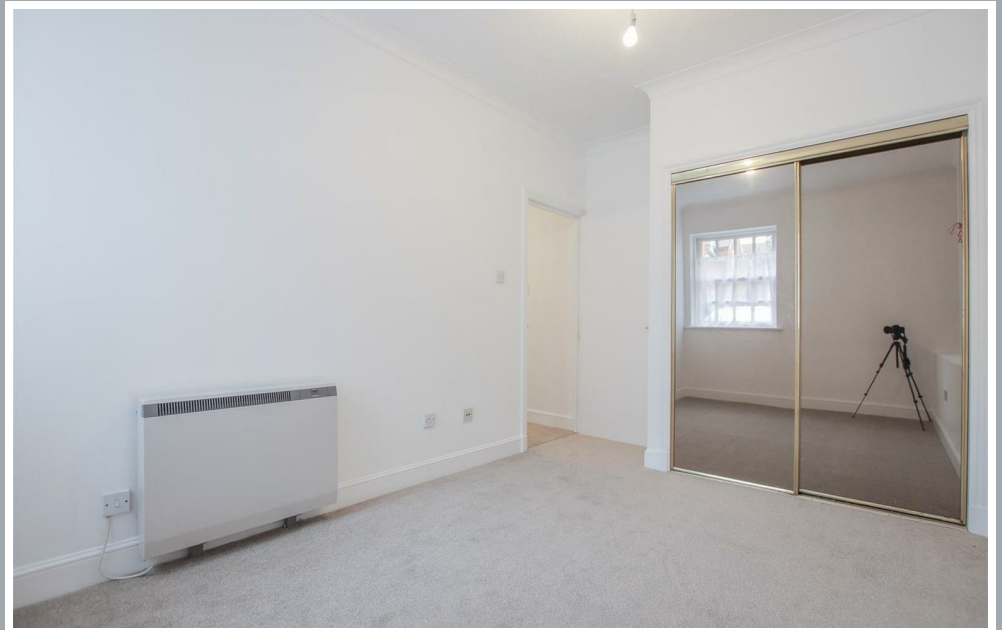
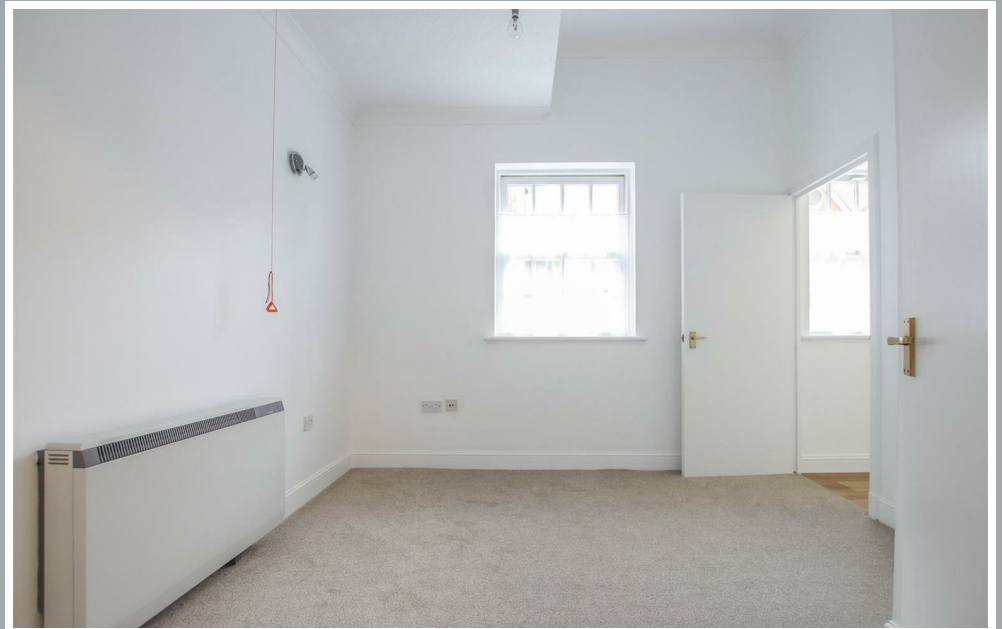
****RETIREMENT APARTMENT & CHAIN FREE****

Chauncy Court forms part of this stunning period building converted into beautiful apartments for the over 55s which offers warden assisted living. This property is in good condition throughout and benefits from being recently decorated with new carpet fitted ready for the next resident to enjoy. Being positioned on the ground floor this property offers easy access to the communal facilities and the building entrance and exits. The accommodation comprises of an entrance hallway, light & airy living room, separate kitchen, generous size bedroom and fitted bathroom suite. Externally, there is lift access, entry phone system, communal lounge on the ground floor for Chauncy Court residents to use and communal gardens.

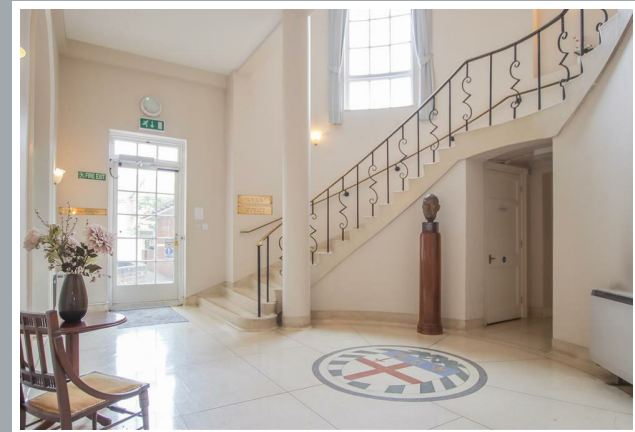
NO STAMP DUTY! A one bedroom ground floor retirement apartment with 'warden assistance' for the over 55s. The property forms part of a highly regarded character apartment nearing the heart of the town centre and being a moments stroll to Hertford East BR station. Chauncy Court is perfectly positioned in this quiet town centre location offering easy flat access to all of Hertford's Towns local amenities which includes a wide range of shops, restaurants, coffee shops and much more. Hertford East Train Station is only (0.1m) away which is just next to Tesco superstore. Hartham Common is only a short stroll away which has a local leisure centre, tennis courts, playing fields and woodland.



70 Fore Street, Hertford, Hertfordshire, SG14 1BY



70 Fore Street, Hertford, Hertfordshire, SG14 1BY

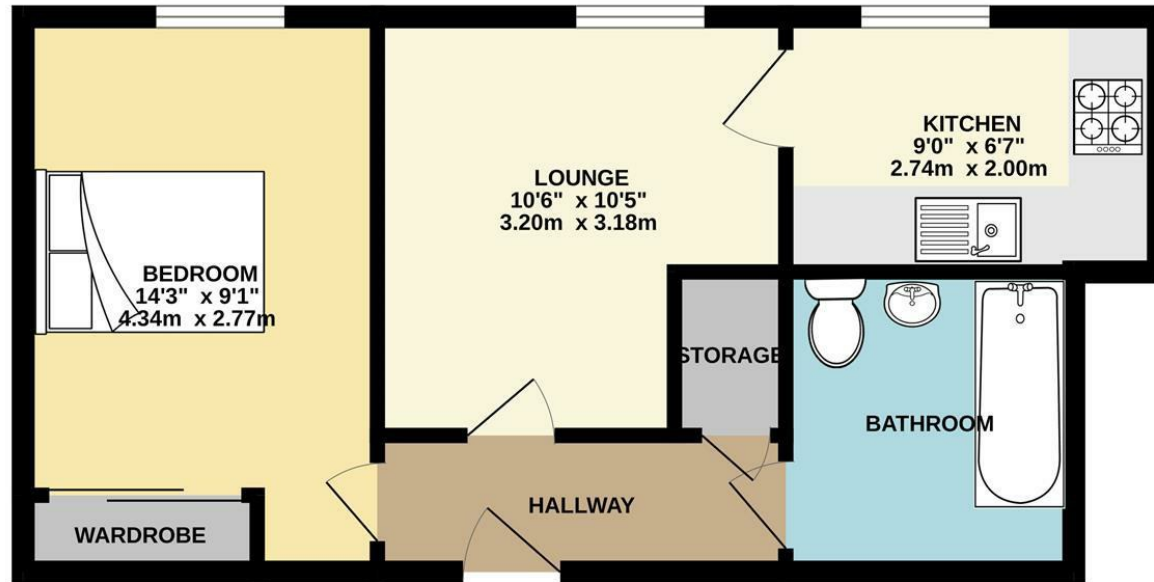


70 Fore Street, Hertford, Hertfordshire, SG14 1BY



70 Fore Street, Hertford, Hertfordshire, SG14 1BY

GROUND FLOOR
398 sq.ft. (37.0 sq.m.) approx.



TOTAL FLOOR AREA : 398 sq.ft. (37.0 sq.m.) approx.

Whilst every attempt has been made to ensure the accuracy of the floorplan contained here, measurements of doors, windows, rooms and any other items are approximate and no responsibility is taken for any error, omission or mis-statement. This plan is for illustrative purposes only and should be used as such by any prospective purchaser. The services, systems and appliances shown have not been tested and no guarantee as to their operability or efficiency can be given.
Made with Metropix ©2024

These particulars, whilst believed to be accurate are set out as a general outline only for guidance and do not constitute any part of an offer or contract. Intending purchasers should not rely on them as statements of representation of fact, but must satisfy themselves by inspection or otherwise as to their accuracy. No person in this firm's employment has the authority to make or give any representation or warranty in respect of the property.



stevenoates.com