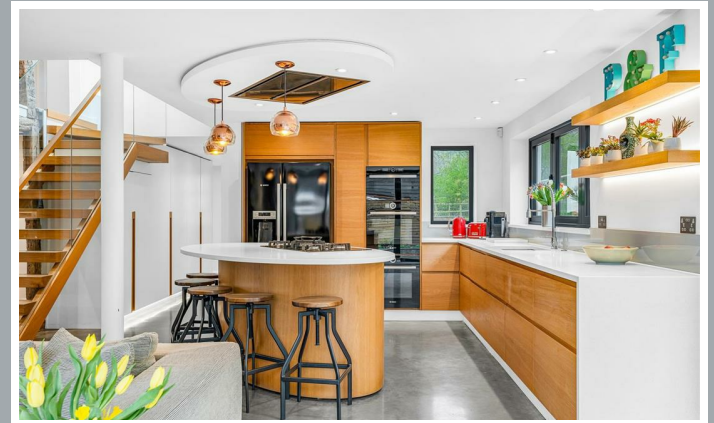




Underwood Cottage, Easneye, Ware  
SG12 8LS  
Guide Price £1,500,000



[stevenoates.com](http://stevenoates.com)



## Underwood Cottage Easneye, Ware, Hertfordshire, SG12 8LS

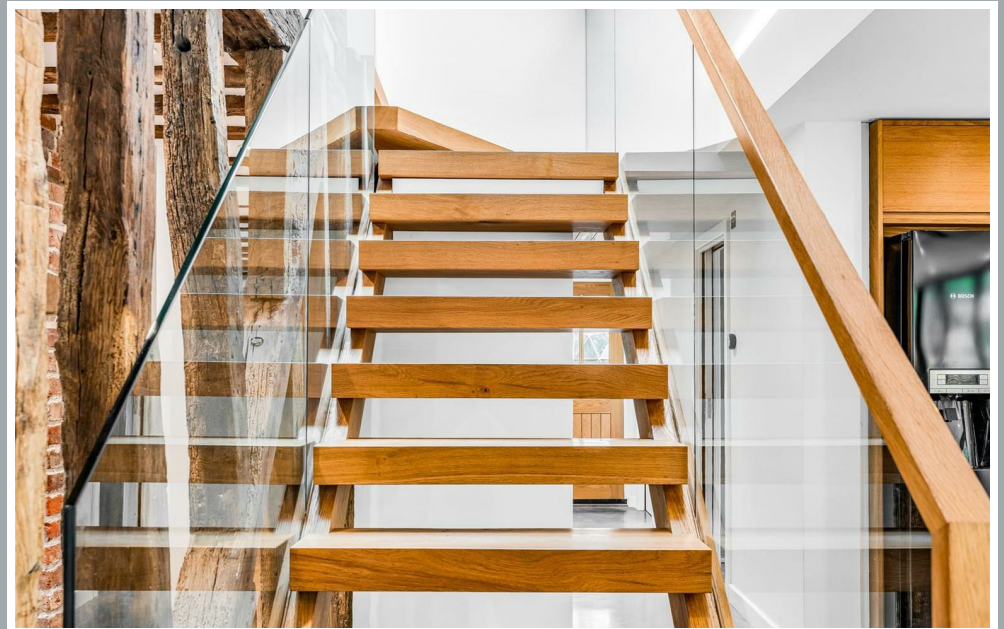
Nestled in the charming 'Easneye Estate' in between Ware and the village of Wareside, Steven Oates are delighted to offer this stunning detached house is a true gem waiting to be discovered. Boasting 4 reception rooms and 5 bedrooms spread across its spacious 3000 sq ft, this Grade II listed home seamlessly blends contemporary updates with period character, offering the best of both worlds. As you step inside, you'll be greeted by a charming entrance hallway leading to four reception rooms to include a fully fitted kitchen with bi-fold doors leading to the well maintained rear garden. There are four bedrooms on the first floor, with the principal bedroom featuring an en-suite and a dressing area, perfect for unwinding after a long day. Situated on approximately half an acre plot, the landscaped sunny Southwest-facing garden is a tranquil oasis where you can relax and entertain in style. Imagine enjoying a cup of tea on a lazy Sunday afternoon or hosting a summer barbecue in this picturesque setting. Convenience is key with this property, as it is ideally located close to local amenities in Ware, Hertford, and Stanstead Abbots. For families, the proximity to top-rated catchment for schools to include; Richard Hale, Presdales and Chauncy makes it an ideal choice for those looking to provide the best education for their children.

This property comes with a fantastic bonus feature: a self-contained 1000 sq ft one-bedroom annexe/double garage. Complete with versatile living space and shower room, this annexe offers endless possibilities - whether it's for accommodating guests or setting up a home office, Don't miss out on the chance to own this exceptional property that offers space, style, and versatility in one of the most sought-after locations. Book a viewing today and step into your dream home in Easneye!

Underwood Cottage offers a charming and tranquil rural setting with immediate access to an extensive network of footpaths plus excellent access to local amenities and London, as well as a variety of local amenities. Situated just a short drive away from Ware (Approx 5 minute drive / less than 2 miles), Stanstead Abbots (less than 3 miles) and Hertford, residents can easily reach these vibrant towns with their range of services and attractions. The house is perfect for families seeking an outdoor lifestyle, the property provides immediate access to scenic footpaths along the country estate lanes, disused railway, and river valley in both directions.



70 Fore Street, Hertford, Hertfordshire, SG14 1BY



70 Fore Street, Hertford, Hertfordshire, SG14 1BY



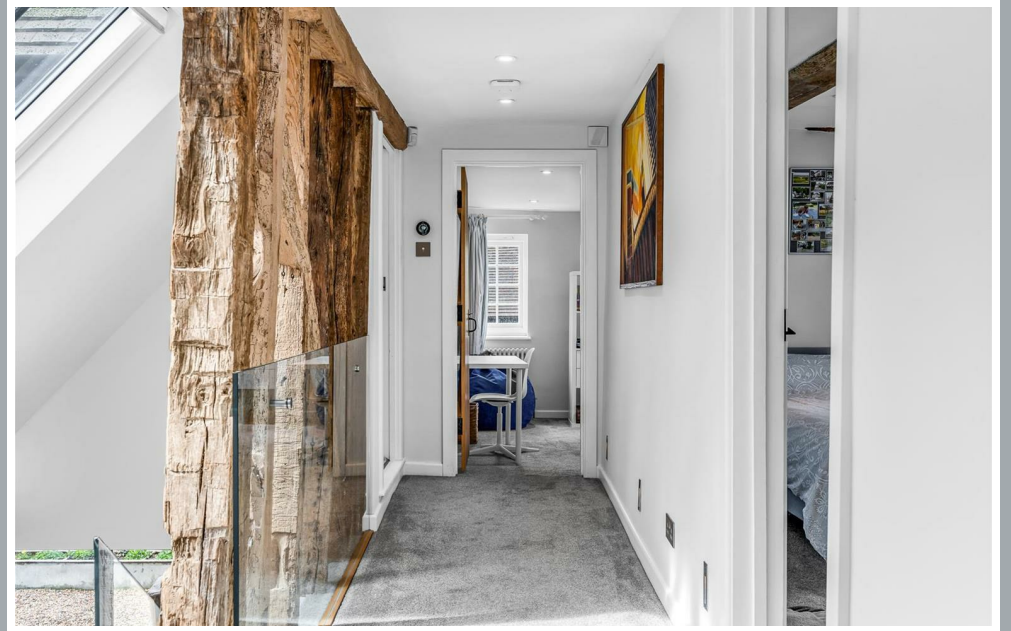
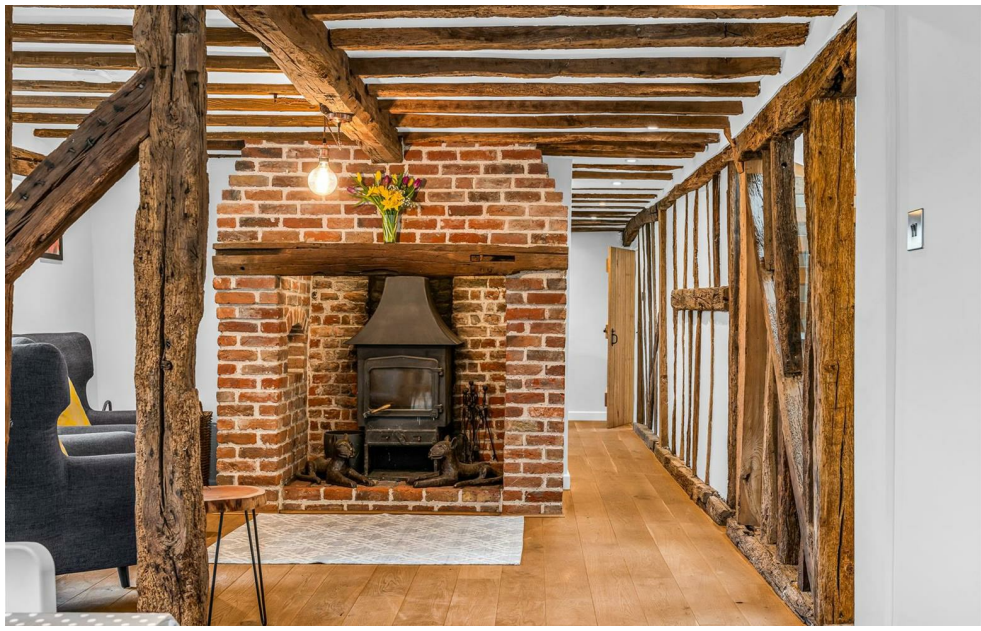
70 Fore Street, Hertford, Hertfordshire, SG14 1BY



70 Fore Street, Hertford, Hertfordshire, SG14 1BY

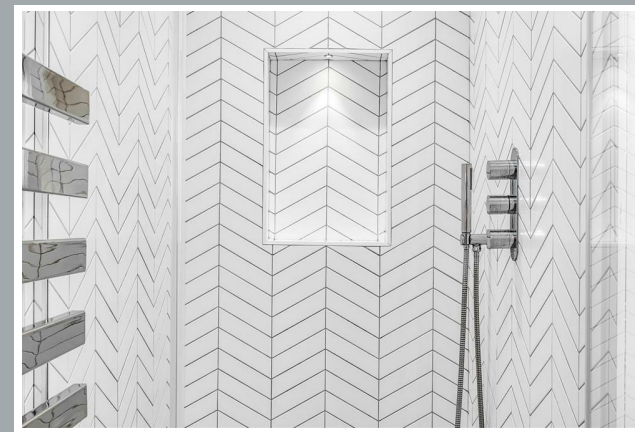


70 Fore Street, Hertford, Hertfordshire, SG14 1BY

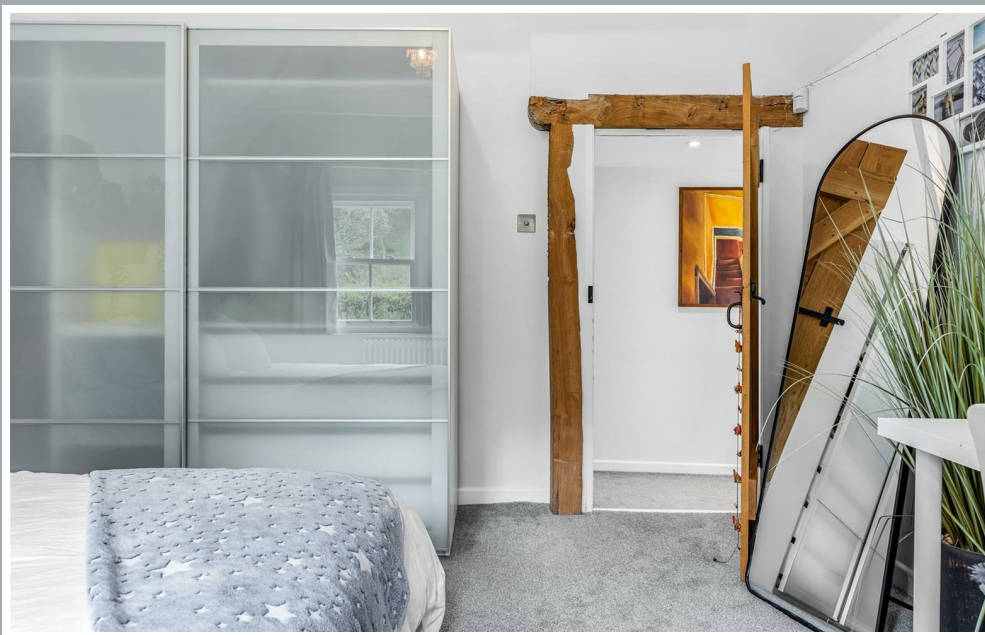


70 Fore Street, Hertford, Hertfordshire, SG14 1BY

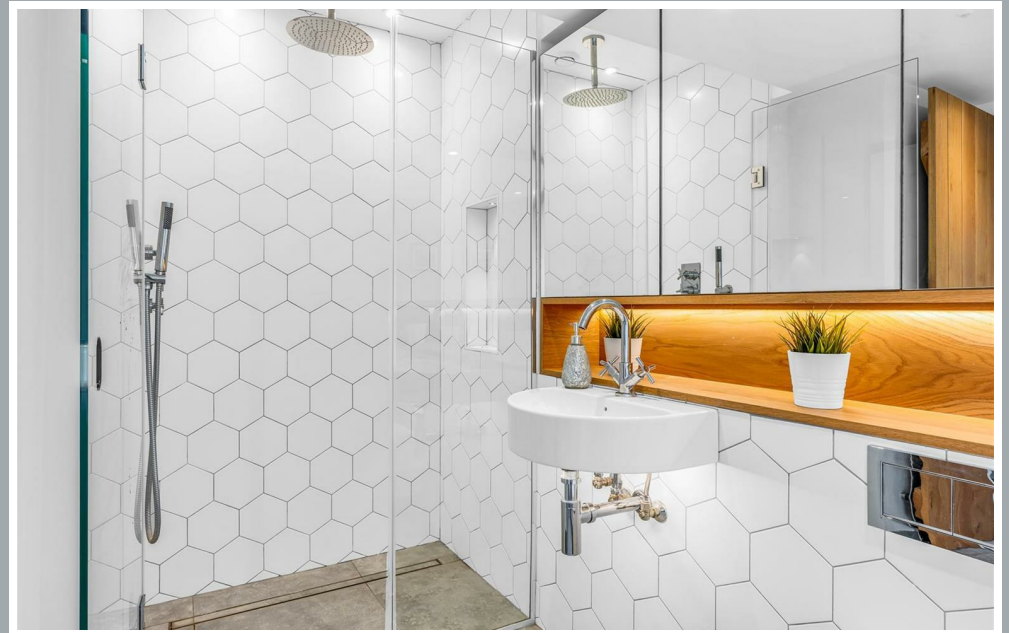




70 Fore Street, Hertford, Hertfordshire, SG14 1BY



70 Fore Street, Hertford, Hertfordshire, SG14 1BY



70 Fore Street, Hertford, Hertfordshire, SG14 1BY



70 Fore Street, Hertford, Hertfordshire, SG14 1BY



70 Fore Street, Hertford, Hertfordshire, SG14 1BY



70 Fore Street, Hertford, Hertfordshire, SG14 1BY



70 Fore Street, Hertford, Hertfordshire, SG14 1BY



70 Fore Street, Hertford, Hertfordshire, SG14 1BY





Total area: approx. 279.0 sq. metres (3003.0 sq. feet)

FOR ILLUSTRATIVE PURPOSES ONLY. NOT TO SCALE

Whilst every attempt has been made to ensure the accuracy of the floor plan shown, all measurements, positioning, fixtures, features, fittings and any other data shown are an approximate interpretation for illustrative purposes only and are not to scale. No responsibility is taken for any error, omission, miss-statement or use of data shown.

Property marketing provided by [www.matthewkyle.co.uk](http://www.matthewkyle.co.uk)

These particulars, whilst believed to be accurate are set out as a general outline only for guidance and do not constitute any part of an offer or contract. Intending purchasers should not rely on them as statements of representation of fact, but must satisfy themselves by inspection or otherwise as to their accuracy. No person in this firm's employment has the authority to make or give any representation or warranty in respect of the property.



[stevenoates.com](http://stevenoates.com)